



# Saddle Creek South Land Management Agreement

July 14, 2011



*Transportation Corridor Agencies*



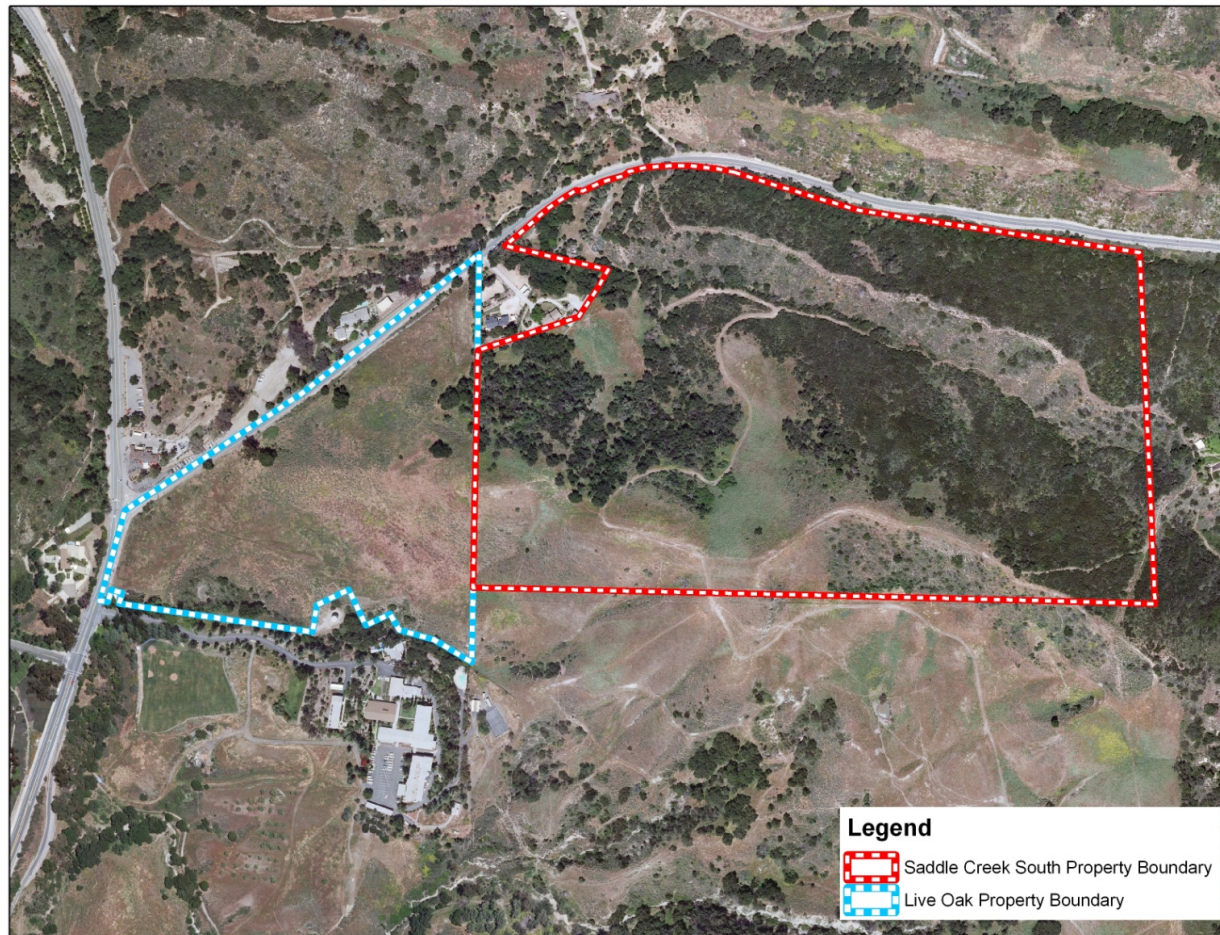
# Background

- OCTA's Measure M2 Mitigation & Resource Protection Program:
  - Offsets impacts for the 13 M2 freeway improvement projects
  - Provides funding for acquisition and restoration of open space
  - 900 acres acquired to date
    - Including Saddle Creek South



# Property Location

- Trabuco Canyon
- 84-acre parcel
- Adjacent to TCA property & Cleveland National Forest





# Interim Land Manager Services

- Two year agreement between TCA and OCTA to provide land management services, as prescribed by OCTA and resource agencies.
- TCA services include:
  - biological support to maintain existing habitat values;
  - maintenance activities to insure fencing remains intact; and
  - patrol services to keep property secure



# Management Services

- TCA land management services are fully reimbursable by OCTA
- Support services provided by:
  - NewFields (biological services)
  - Nakae & Associates (maintenance)
  - Castillo Patrol (property security)
- Staff requests two year agreement to provide land management services for an amount NTE \$190,249



# Questions

