

EXHIBIT A

STATE OF CALIFORNIA BUSINESS AND TRANSPORTATION AGENCY DEPARTMENT OF TRANSPORTATION DISTRICT 12 - RIGHT OF WAY ENGINEERING IN THE CITY OF YORBA LINDA COUNTY OF ORANGE

RELINQUISHMENT OF PORTIONS OF WESTBOUND STATE ROUTE 91
RIGHT-OF-WAY FROM WEIR CANYON ROAD TO THE ORANGE & RIVERSIDE COUNTY BOUNDARY

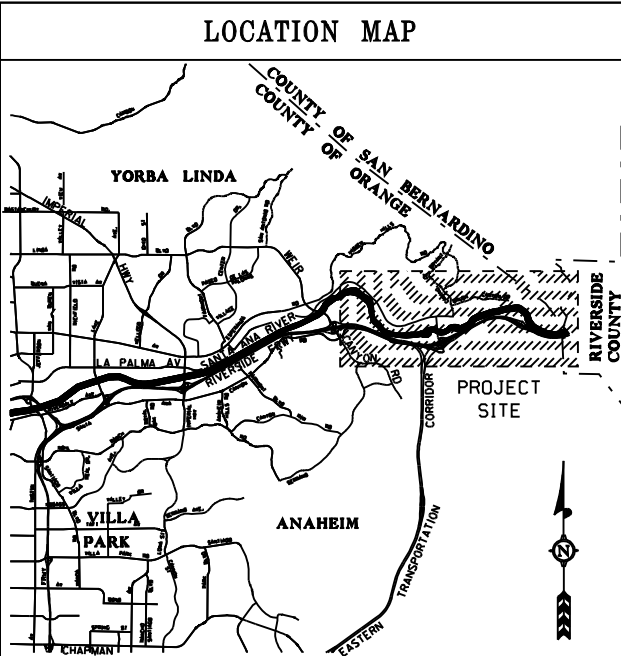
DIST.	COUNTY	ROUTE	POST MILE	SHEET NO.	TOTAL SHEETS
12	ORA	91	14.90/18.90	1	7

SURVEYORS STATEMENT:
THIS MAP CONSISTING OF 7 SHEETS WAS PREPARED BY ME OR UNDER MY DIRECTION IN COMPLIANCE WITH SECTION 128 OF THE STREETS AND HIGHWAYS CODE AND WAS COMPILED FROM THE ORANGE COUNTY RECORD OF SURVEY.

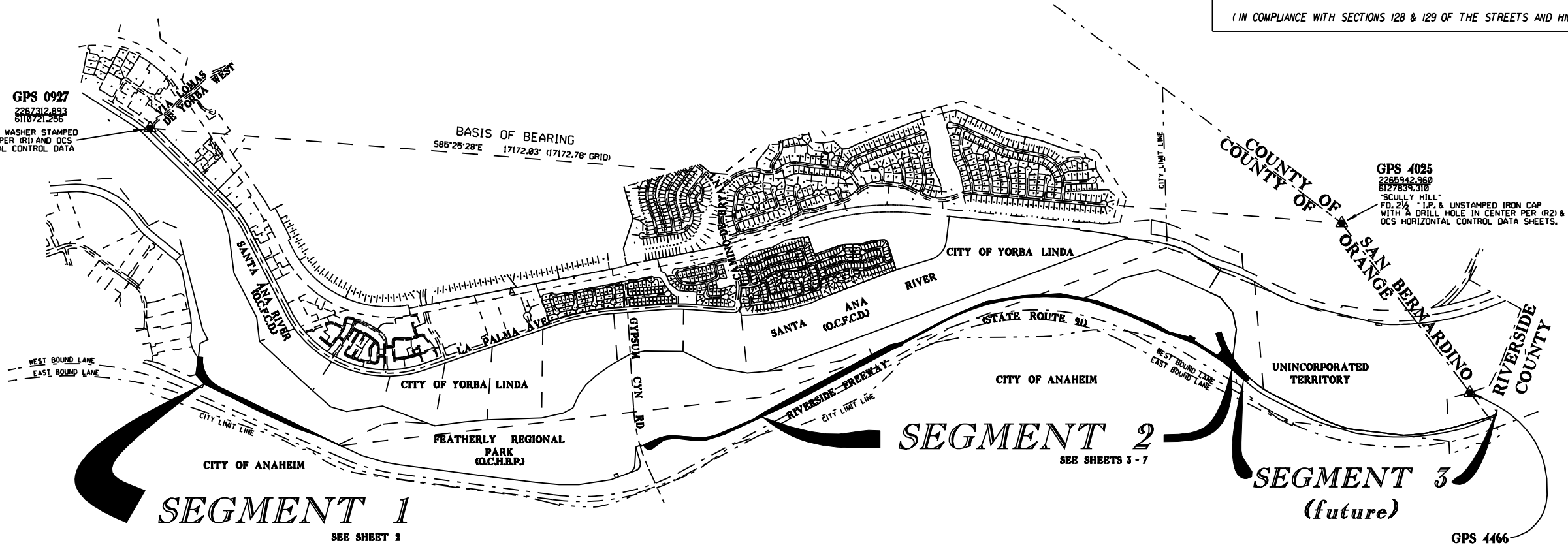


John D. Pavlik, Right of Way Engineering Manager
County of Orange - OC Public Works

FILED FOR RECORD IN
STATE HIGHWAY MAP BOOK NO. _____ AT PAGE NO. _____
DATE: _____ TIME: _____ FEE: _____ EXEMPT PER GOV. CODE 8103
RECORDS INDEX NO. _____
RECORDS OF ORANGE COUNTY, CALIFORNIA
TOM DAILY, CLERK-RECORDER BY: _____ DEPUTY
(IN COMPLIANCE WITH SECTIONS 128 & 129 OF THE STREETS AND HIGHWAY CODE)



INDEX MAP:
SCALE 1" = 900'



- 5 F.D. I.P. & TAG "P.L.S. 7159" NO REF. NO. 1404W 018" DN. 0.3"
- 6 F.D. I.P. & TAG "P.L.S. 7159" NO REF. DN. 0.2" 180° 45' 37W 0.0"
- 7 F.D. I.P. & TAG "L.S. 3485" PER (RI, DN. 0.3", NORTH 27°W 0.1"
- 8 F.D. I.P. & TAG STAMPED "O.C.S. 37 6-93" PER (RI, DN. 1.0"
- 9 F.D. I.P. & TAG "O.C.S. 44 6-93" PER (RI, DN. 0.8"
- 10 F.D. I.P. & TAG "O.C.S. 46 6-93" PER (RI, DN. 0.6"
- 11 F.D. BOLT SPK. & WASHER "O.C.S. 55 6-93" PER (RI, FLUSH
- 12 F.D. I.P. & TAG "O.C.S. 56 6-93" PER (RI, DN. 1.0"
- 13 F.D. I.P. & TAG "O.C.S. 60 6-93" PER (RI, DN. 0.4"
- 14 F.D. I.P. W/ CONC. PLUG & SPK. (NO TAG) PER (RI, DN. 0.1"
- 15 F.D. I.P. W/ CONC. PLUG & SPK. (NO TAG) PER (RI, DN. 1.0", N50° 53' 04W 0.22"
- 16 F.D. I.P. W/ 3" BR. O.C.S. DISK (IN LIEU OF 2" O.C.S. DISK) STAMPED "L.S. 5899" PER (RI, FLUSH
- 17 F.D. 1/8" I.P. & TAG "DN. OF HWY." PER (RI, DN. 0.5"
- 18 F.D. I.P. & TAG (ILLEGIBLE) PER (RI, DN. 1.0"
- 19 F.D. I.P. W/ 2" BR. O.C.S. DISK STAMPED "L.S. 5899" PER (RI, UP 0.3"
- 20 F.D. I.P. W/ 2" BR. O.C.S. DISK STAMPED "L.S. 5899" PER (R2), FLUSH
- 21 F.D. I.P. W/ 2" BR. O.C.S. DISK STAMPED "L.S. 5899" PER (R2), FLUSH
- 22 F.D. I.P. W/ 2" BR. O.C.S. DISK STAMPED "L.S. 5899" PER (R2), FLUSH
- 23 F.D. I.P. W/ 2" BR. O.C.S. DISK STAMPED "L.S. 5899" PER (R2), FLUSH
- 24 F.D. I.P. W/ 2" BR. O.C.S. DISK STAMPED "L.S. 5899" PER (R2), FLUSH
- 25 F.D. I.P. W/ 2" BR. O.C.S. DISK STAMPED "L.S. 5899" PER (R2), FLUSH

MONUMENT NOTES

- ▲ : FOUND O.C.S. HORIZONTAL CONTROL STATION PER O.C.S. HORIZONTAL CONTROL DATA SHEET ON FILE IN THE ORANGE COUNTY SURVEYOR'S OFFICE.
- : POSITION OF OF 2" I.P. W/ 2" BR. O.C.S. DISK STAMPED "L.S. 5899" SET BY (RI), NOT SEARCHED FOR.
- : POSITION OF 2" I.P. W/ 2" BR. O.C.S. DISK STAMPED "L.S. 5899" SET BY (R2), NOT SEARCHED FOR.
- ⊠ : SEARCHED FOR, FOUND NOTHING.
- △ : UNABLE TO SEARCH FOR, POINT FALLS IN WATER.
- : FOUND MONUMENT AS SHOWN BELOW UNLESS OTHERWISE NOTED.

REFERENCES:

- R1 - RECORD PER R.S. 95-1062, R.S.B. 166/1-16
- R2 - RECORD PER R.S. 94-1067, R.S.B. 158/1-18

PURPOSE STATEMENT:

THE PURPOSE OF THIS MAP IS TO RELINQUISH TO THE ORANGE COUNTY FLOOD CONTROL DISTRICT ANY RIGHT, TITLE, AND INTEREST IN AND TO THAT PORTION OF WESTBOUND STATE ROUTE 91 FROM WEIR CANYON ROAD TO THE ORANGE & RIVERSIDE COUNTY BOUNDARY SHOWN AS SEGMENT(S) 1 & 2 HEREON.

GENERAL NOTES:

1. STATE'S RIGHTS ARE NOT EXTINGUISHED UNTIL RECORDATION OF RELATED CALIFORNIA TRANSPORTATION COMMISSION RESOLUTION.
2. THE BEARINGS SHOWN ARE BASED ON THE CALIFORNIA COORDINATE SYSTEM, NAD 83, ZONE 6 (1991.35 EPOCH).
3. THE DISTANCES AND STATIONING ARE GRID. MULTIPLY GRID DISTANCES SHOWN BY 1.0000446 TO OBTAIN GROUND DISTANCES.
4. UPON PASSAGE AND RECORDATION OF A CALIFORNIA TRANSPORTATION COMMISSION RESOLUTION RELINQUISHING SEGMENTS 1 AND 2 SHOWN ON THIS MAP, ANY RIGHT, TITLE, AND INTEREST HELD BY THE STATE IN AND TO SEGMENT(S) 1 AND 2 SHALL TRANSFER TO THE ORANGE COUNTY FLOOD CONTROL DISTRICT AS SPECIFIED IN SAID CTC RESOLUTION. TO DETERMINE THE STATUS AND LOCATION OF ANY OTHER LINE SHOWN ON THIS MAP, CONSULT WITH THE RIGHT OF WAY RECORD MAPS AND RECORD DOCUMENTS, THAT CREATED AND OR MODIFIED THOSE LINES, ON FILE AT THE DEPARTMENT OF TRANSPORTATION, DISTRICT 12 OFFICE OR THE OFFICE OF THE ORANGE COUNTY RECORDER.

STATE OF CALIFORNIA BUSINESS AND TRANSPORTATION AGENCY DEPARTMENT OF TRANSPORTATION	
PROPOSED RELINQUISHMENT MAP NO. R120032 FOR RELINQUISHMENT TO THE COUNTY OF ORANGE	
PREPARED BY: OCPW/ROWE/JV.	CHECKED BY: OCPW/ROWE/J.D.P.
REFERENCE R/W MAPS:	DATUM: NAD 83, ZONE 6 (1991.35 EPOCH)
E.A. 04100	REVISED DATE: 8/9/09 PRINT DATE: 8/9/09

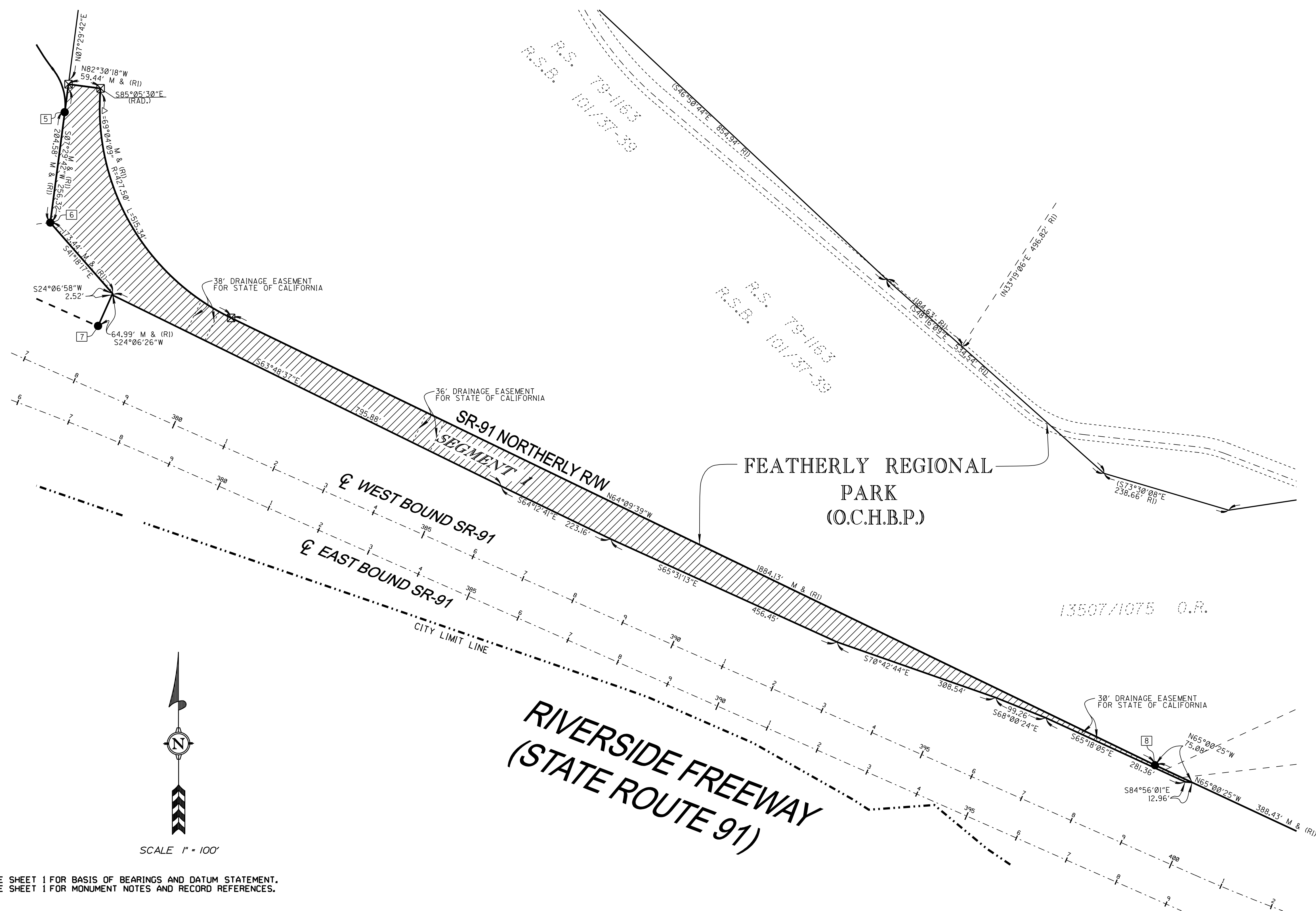
EXHIBIT A

STATE OF CALIFORNIA DISTRICT 12 - RIGHT OF WAY ENGINEERING RELINQUISHMENT MAP

DIST.	COUNTY	ROUTE	POST MILE	SHEET NO.	TOTAL SHEETS
12	ORA	91	14.90/18.90	2	7



John D. Pavlik, Right of Way Engineering Manager
County of Orange - OC Public Works

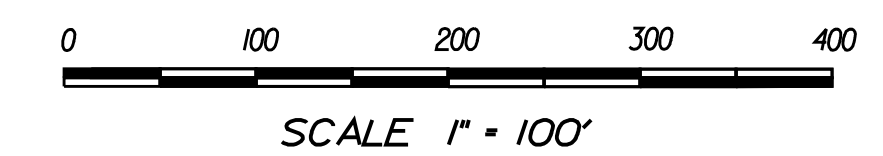


GENERAL NOTES:

- STATE'S RIGHTS ARE NOT EXTINGUISHED UNTIL RECORDATION OF RELATED CALIFORNIA TRANSPORTATION COMMISSION RESOLUTION.
- THE BEARINGS SHOWN ARE BASED ON THE CALIFORNIA COORDINATE SYSTEM, NAD 83, ZONE 6 PER STATE OF CALIFORNIA, DEPARTMENT OF TRANSPORTATION RIGHT OF WAY MAP NO. _____
- THE DISTANCES AND STATIONING ARE GRID, MULTIPLY GRID DISTANCES SHOWN BY 1.0000446 TO OBTAIN GROUND DISTANCES.
- UPON PASSAGE AND RECORDATION OF A CALIFORNIA TRANSPORTATION COMMISSION RESOLUTION RELINQUISHING SEGMENTS 1 & 2 SHOWN ON THIS MAP, ANY RIGHT, TITLE, AND INTEREST HELD BY THE STATE IN AND TO SEGMENTS 1 & 2, SHALL TRANSFER TO THE ORANGE COUNTY FLOOD CONTROL DISTRICT AS SPECIFIED IN SAID CTC RESOLUTION. TO DETERMINE THE STATUS AND LOCATION OF ANY OTHER LINE SHOWN ON THIS MAP, CONSULT WITH THE RIGHT OF WAY RECORD MAPS AND RECORD DOCUMENTS, THAT CREATED AND OR MODIFIED THOSE LINES, ON FILE AT THE DEPARTMENT OF TRANSPORTATION, DISTRICT 12 OFFICE OR THE OFFICE OF THE ORANGE COUNTY RECORDER.

LEGEND:

AREA TO BE RELINQUISHED



STATE OF CALIFORNIA
BUSINESS AND TRANSPORTATION AGENCY
DEPARTMENT OF TRANSPORTATION

PROPOSED RELINQUISHMENT MAP NO. RI20032

FOR RELINQUISHMENT TO THE COUNTY OF ORANGE

PREPARED BY: OCPW/ROWE/ J.V. CHECKED BY: OCPW/ROWE/J.D.P.

REFERENCE R/W MAPS: DATUM: NAD 83, ZONE 6 (1991.35 EPOCH)

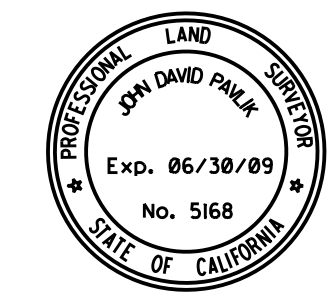
EA: 04100 REVISED DATE: 8/10/09 PRINT DATE: 8/10/09

SEE SHEET 1 FOR BASIS OF BEARINGS AND DATUM STATEMENT.
SEE SHEET 1 FOR MONUMENT NOTES AND RECORD REFERENCES.

EXHIBIT A

STATE OF CALIFORNIA DISTRICT 12 - RIGHT OF WAY ENGINEERING RELINQUISHMENT MAP

DIST.	COUNTY	ROUTE	POST MILE	SHEET NO.	TOTAL SHEETS
12	ORA	91	14.90/18.90	3	7



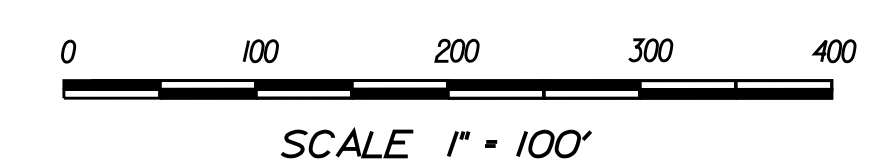
John D. Pavlik, Right of Way Engineering Manager
County of Orange - OC Public Works

GENERAL NOTES:

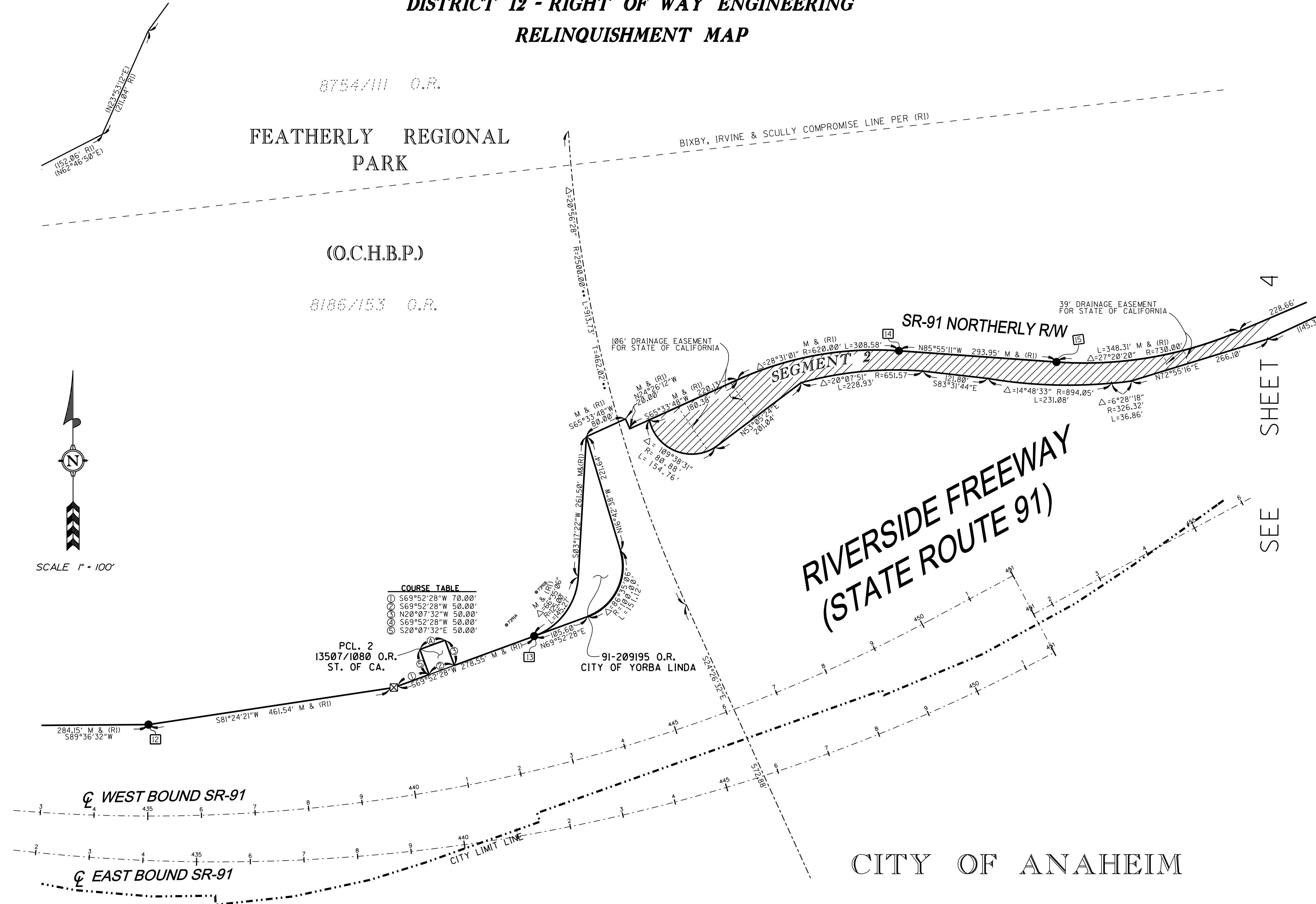
- STATE'S RIGHTS ARE NOT EXTINGUISHED UNTIL RECORDATION OF RELATED CALIFORNIA TRANSPORTATION COMMISSION RESOLUTION.
- THE BEARINGS SHOWN ARE BASED ON THE CALIFORNIA COORDINATE SYSTEM, NAD 83, ZONE 6 PER STATE OF CALIFORNIA, DEPARTMENT OF TRANSPORTATION RIGHT OF WAY MAP NO. _____
- THE DISTANCES AND STATIONING ARE GRID. MULTIPLY GRID DISTANCES SHOWN BY 1.0000446 TO OBTAIN GROUND DISTANCES.
- UPON PASSAGE AND RECORDATION OF A CALIFORNIA TRANSPORTATION COMMISSION RESOLUTION RELINQUISHING SEGMENTS 1 & 2 SHOWN ON THIS MAP, ANY RIGHT, TITLE, AND INTEREST HELD BY THE STATE IN AND TO SEGMENTS 1 & 2, SHALL TRANSFER TO THE ORANGE COUNTY FLOOD CONTROL DISTRICT AS SPECIFIED IN SAID CTC RESOLUTION. TO DETERMINE THE STATUS AND LOCATION OF ANY OTHER LINE SHOWN ON THIS MAP, CONSULT WITH THE RIGHT OF WAY RECORD MAPS AND RECORD DOCUMENTS, THAT CREATED AND OR MODIFIED THOSE LINES, ON FILE AT THE DEPARTMENT OF TRANSPORTATION, DISTRICT 12 OFFICE OR THE OFFICE OF THE ORANGE COUNTY RECORDER.

LEGEND:

AREA TO BE RELINQUISHED



SEE SHEET 4



SCALE 1" = 100'

SEE SHEET 1 FOR BASIS OF BEARINGS AND DATUM STATEMENT.
SEE SHEET 1 FOR MONUMENT NOTES AND RECORD REFERENCES.

STATE OF CALIFORNIA
BUSINESS AND TRANSPORTATION AGENCY
DEPARTMENT OF TRANSPORTATION

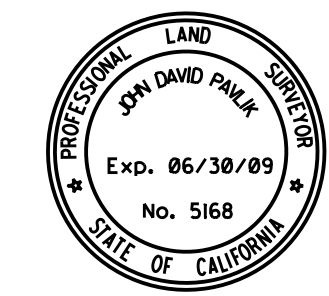
**PROPOSED RELINQUISHMENT
MAP NO. RI20032**
FOR RELINQUISHMENT TO THE COUNTY OF ORANGE

PREPARED BY: OCPW/ROWE/ J.V.	CHECKED BY: OCPW/ROWE/J.D.P.
REFERENCE R/W MAPS:	DATUM: NAD 83, ZONE 6 (1991.35 EPOCH)
E&: 04100	REVISED DATE: 8/10/09 PRINT DATE: 8/10/09

EXHIBIT A

STATE OF CALIFORNIA DISTRICT 12 - RIGHT OF WAY ENGINEERING RELINQUISHMENT MAP

DIST.	COUNTY	ROUTE	POST MILE	SHEET NO.	TOTAL SHEETS
12	ORA	91	14.90/18.90	4	7



John D. Pavlik, Right of Way Engineering Manager
County of Orange - OC Public Works

GENERAL NOTES:

- STATE'S RIGHTS ARE NOT EXTINGUISHED UNTIL RECORDATION OF RELATED CALIFORNIA TRANSPORTATION COMMISSION RESOLUTION.
- THE BEARINGS SHOWN ARE BASED ON THE CALIFORNIA COORDINATE SYSTEM, NAD 83, ZONE 6 PER STATE OF CALIFORNIA, DEPARTMENT OF TRANSPORTATION RIGHT OF WAY MAP NO. _____
- THE DISTANCES AND STATIONING ARE GRID, MULTIPLY GRID DISTANCES SHOWN BY 1.0000446 TO OBTAIN GROUND DISTANCES.
- UPON PASSAGE AND RECORDATION OF A CALIFORNIA TRANSPORTATION COMMISSION RESOLUTION RELINQUISHING SEGMENTS 1 & 2 SHOWN ON THIS MAP, ANY RIGHT, TITLE, AND INTEREST HELD BY THE STATE IN AND TO SEGMENTS 1 & 2, SHALL TRANSFER TO THE ORANGE COUNTY FLOOD CONTROL DISTRICT AS SPECIFIED IN SAID CTC RESOLUTION. TO DETERMINE THE STATUS AND LOCATION OF ANY OTHER LINE SHOWN ON THIS MAP, CONSULT WITH THE RIGHT OF WAY RECORD MAPS AND RECORD DOCUMENTS, THAT CREATED AND OR MODIFIED THOSE LINES, ON FILE AT THE DEPARTMENT OF TRANSPORTATION, DISTRICT 12 OFFICE OR THE OFFICE OF THE ORANGE COUNTY RECORDER.

LEGEND:

AREA TO BE RELINQUISHED



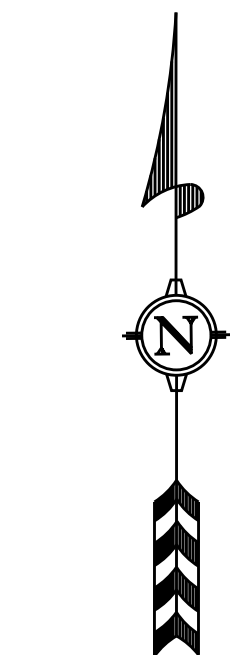
STATE OF CALIFORNIA
BUSINESS AND TRANSPORTATION AGENCY
DEPARTMENT OF TRANSPORTATION

**PROPOSED RELINQUISHMENT
MAP NO. RI20032**
FOR RELINQUISHMENT TO THE COUNTY OF ORANGE

PREPARED BY: OCPW/ROWE/ J.V. CHECKED BY: OCPW/ROWE/J.D.P.

REFERENCE R/W MAPS: DATUM: NAD 83, ZONE 6 (1991.35 EPOCH)

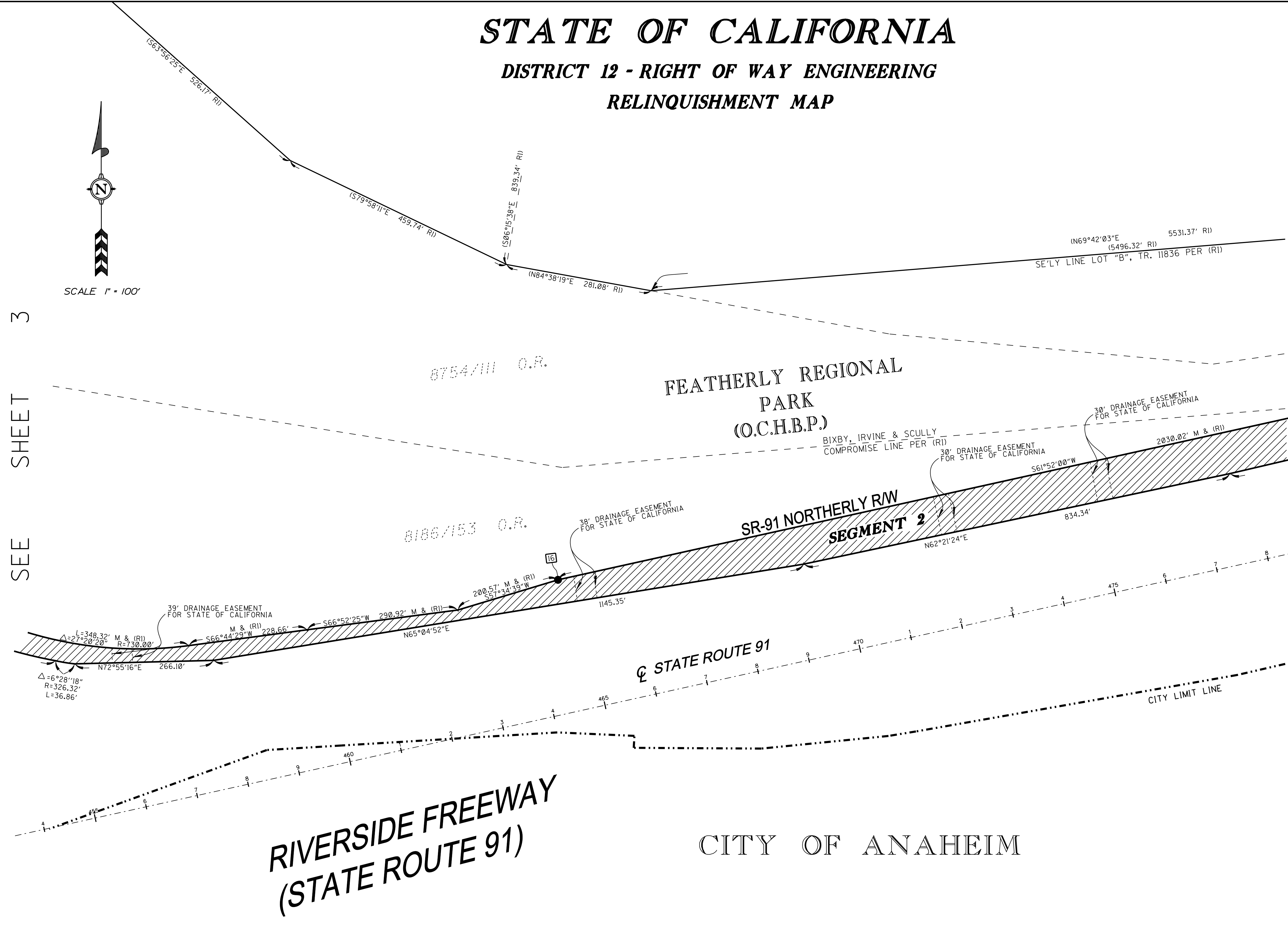
E&: 04100 REVISED DATE: 8/10/09 PRINT DATE: 8/10/09



SCALE 1" = 100'

SEE SHEET 3

SEE SHEET 5



SEE SHEET 1 FOR BASIS OF BEARINGS AND DATUM STATEMENT.
SEE SHEET 1 FOR MONUMENT NOTES AND RECORD REFERENCES.

EXHIBIT A

STATE OF CALIFORNIA DISTRICT 12 - RIGHT OF WAY ENGINEERING RELINQUISHMENT MAP

DIST.	COUNTY	ROUTE	POST MILE	SHEET NO.	TOTAL SHEETS
12	ORA	91	14.90/18.90	5	7



John D. Pavlik, Right of Way Engineering Manager
County of Orange - OC Public Works

GENERAL NOTES:

- STATE'S RIGHTS ARE NOT EXTINGUISHED UNTIL RECORDATION OF RELATED CALIFORNIA TRANSPORTATION COMMISSION RESOLUTION.
- THE BEARINGS SHOWN ARE BASED ON THE CALIFORNIA COORDINATE SYSTEM, NAD 83, ZONE 6 PER STATE OF CALIFORNIA, DEPARTMENT OF TRANSPORTATION RIGHT OF WAY MAP NO. _____
- THE DISTANCES AND STATIONING ARE GRID, MULTIPLY GRID DISTANCES SHOWN BY 1.0000446 TO OBTAIN GROUND DISTANCES.
- UPON PASSAGE AND RECORDATION OF A CALIFORNIA TRANSPORTATION COMMISSION RESOLUTION RELINQUISHING SEGMENTS 1 & 2 SHOWN ON THIS MAP, ANY RIGHT, TITLE, AND INTEREST HELD BY THE STATE IN AND TO SEGMENTS 1 & 2, SHALL TRANSFER TO THE ORANGE COUNTY FLOOD CONTROL DISTRICT AS SPECIFIED IN SAID CTC RESOLUTION. TO DETERMINE THE STATUS AND LOCATION OF ANY OTHER LINE SHOWN ON THIS MAP, CONSULT WITH THE RIGHT OF WAY RECORD MAPS AND RECORD DOCUMENTS, THAT CREATED AND OR MODIFIED THOSE LINES, ON FILE AT THE DEPARTMENT OF TRANSPORTATION, DISTRICT 12 OFFICE OR THE OFFICE OF THE ORANGE COUNTY RECORDER.

LEGEND:

AREA TO BE RELINQUISHED



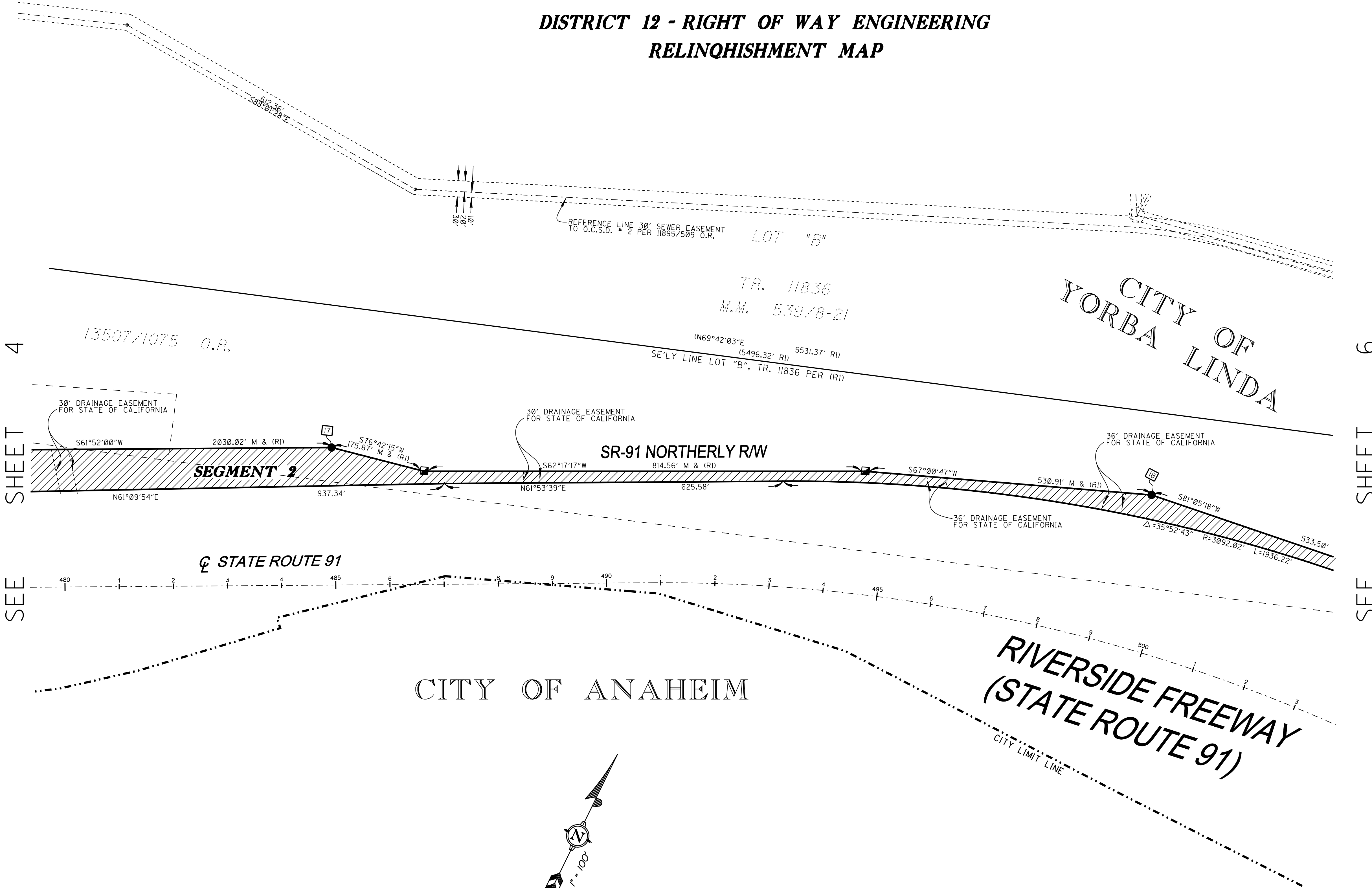
STATE OF CALIFORNIA
BUSINESS AND TRANSPORTATION AGENCY
DEPARTMENT OF TRANSPORTATION

**PROPOSED RELINQUISHMENT
MAP NO. RI20032**
FOR RELINQUISHMENT TO THE COUNTY OF ORANGE

PREPARED BY: OCPW/ROWE/ J.V. CHECKED BY: OCPW/ROWE/J.D.P.

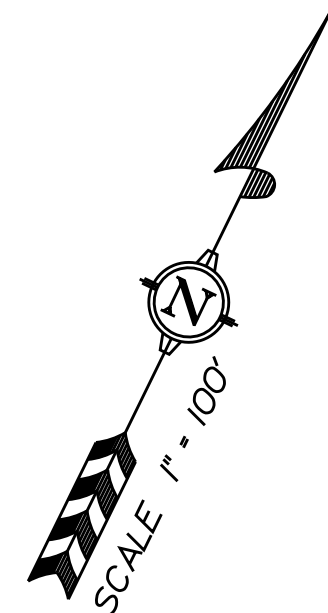
REFERENCE R/W MAPS: DATUM: NAD 83, ZONE 6 (1991.35 EPOCH)

EA: OJ4100 REVISED DATE: 8/10/09 PRINT DATE: 8/10/09



SEE SHEET 4

SEE SHEET 6

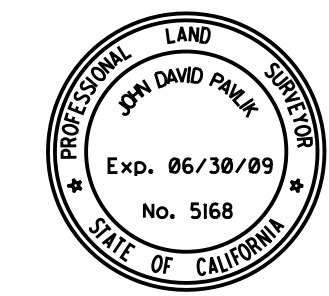


SEE SHEET 1 FOR BASIS OF BEARINGS AND DATUM STATEMENT.
SEE SHEET 1 FOR MONUMENT NOTES AND RECORD REFERENCES.

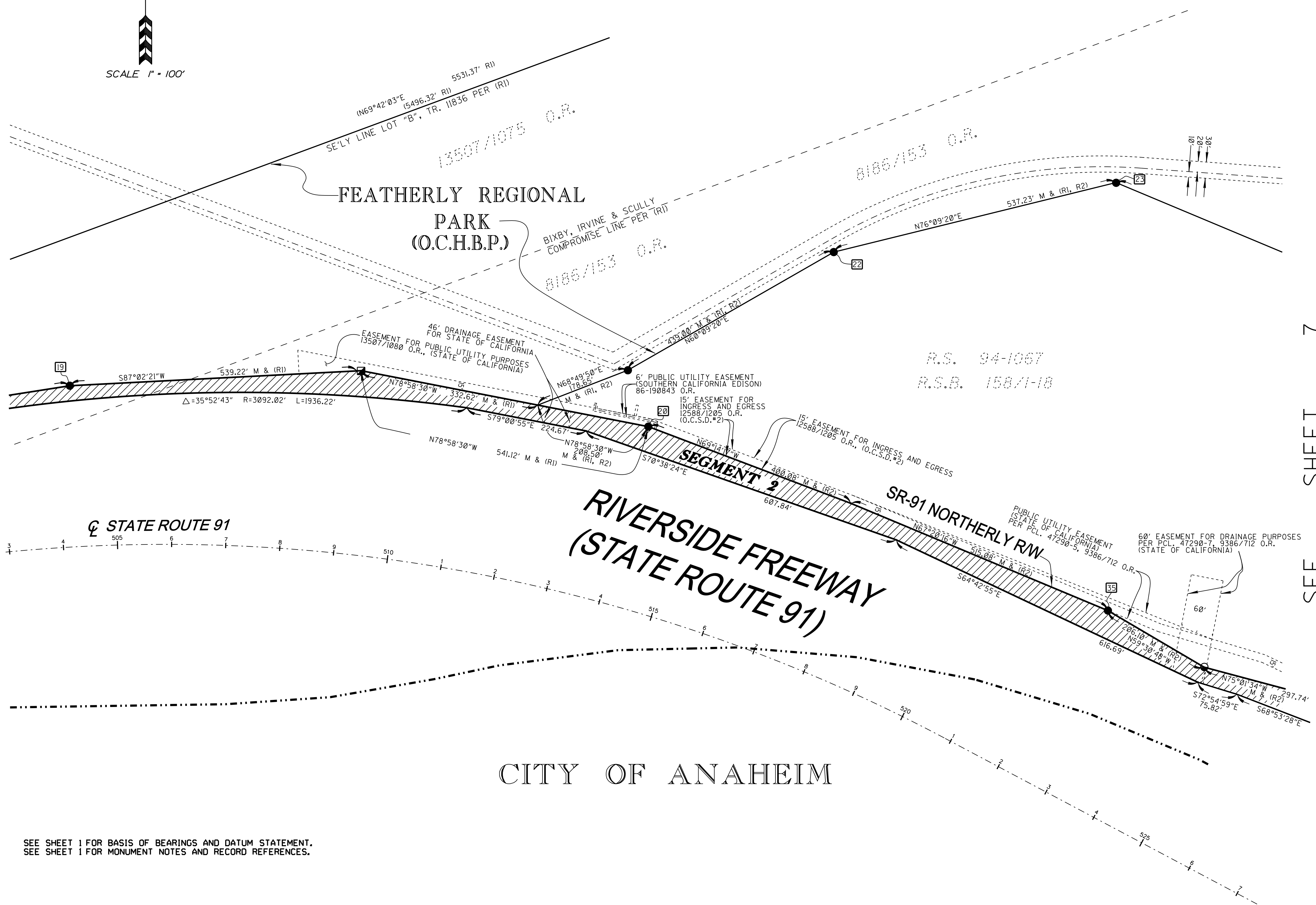
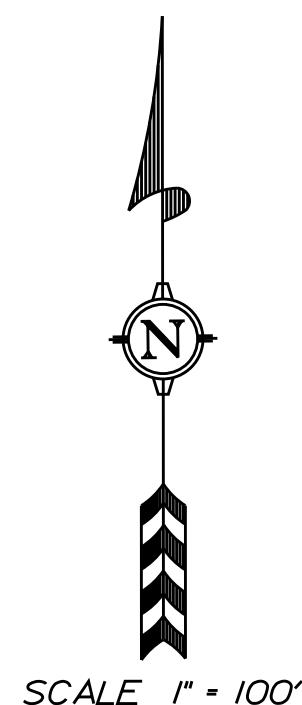
EXHIBIT A

STATE OF CALIFORNIA DISTRICT 12 - RIGHT OF WAY ENGINEERING RELINQUISHMENT MAP

DIST.	COUNTY	ROUTE	POST MILE	SHEET NO.	TOTAL SHEETS
12	ORA	91	14.90/18.90	6	7



John D. Pavlik, Right of Way Engineering Manager
County of Orange - OC Public Works



GENERAL NOTES:

- STATE'S RIGHTS ARE NOT EXTINGUISHED UNTIL RECORDATION OF RELATED CALIFORNIA TRANSPORTATION COMMISSION RESOLUTION.
- THE BEARINGS SHOWN ARE BASED ON THE CALIFORNIA COORDINATE SYSTEM, NAD 83, ZONE 6 PER STATE OF CALIFORNIA, DEPARTMENT OF TRANSPORTATION RIGHT OF WAY MAP NO. _____
- THE DISTANCES AND STATIONING ARE GRID, MULTIPLY GRID DISTANCES SHOWN BY 1.00001446 TO OBTAIN GROUND DISTANCES.
- UPON PASSAGE AND RECORDATION OF A CALIFORNIA TRANSPORTATION COMMISSION RESOLUTION RELINQUISHING SEGMENTS 1 & 2 SHOWN ON THIS MAP, ANY RIGHT, TITLE, AND INTEREST HELD BY THE STATE IN AND TO SEGMENTS 1 & 2, SHALL TRANSFER TO THE ORANGE COUNTY FLOOD CONTROL DISTRICT AS SPECIFIED IN SAID CTC RESOLUTION. TO DETERMINE THE STATUS AND LOCATION OF ANY OTHER LINE SHOWN ON THIS MAP, CONSULT WITH THE RIGHT OF WAY RECORD MAPS AND RECORD DOCUMENTS, THAT CREATED AND OR MODIFIED THOSE LINES, ON FILE AT THE DEPARTMENT OF TRANSPORTATION, DISTRICT 12 OFFICE OR THE OFFICE OF THE ORANGE COUNTY RECORDER.

LEGEND:

AREA TO BE RELINQUISHED



CITY OF ANAHEIM

SEE SHEET 1 FOR BASIS OF BEARINGS AND DATUM STATEMENT.
SEE SHEET 1 FOR MONUMENT NOTES AND RECORD REFERENCES.

STATE OF CALIFORNIA
BUSINESS AND TRANSPORTATION AGENCY
DEPARTMENT OF TRANSPORTATION

PROPOSED RELINQUISHMENT MAP NO. RI20032

FOR RELINQUISHMENT TO THE COUNTY OF ORANGE

PREPARED BY: OCPW/ROWE/ J.V. CHECKED BY: OCPW/ROWE/J.D.P.

REFERENCE R/W MAPS: DATUM: NAD 83, ZONE 6 (1991.35 EPOCH)

E.A. 04100 REVISED DATE: 8/10/09 PRINT DATE: 8/10/09

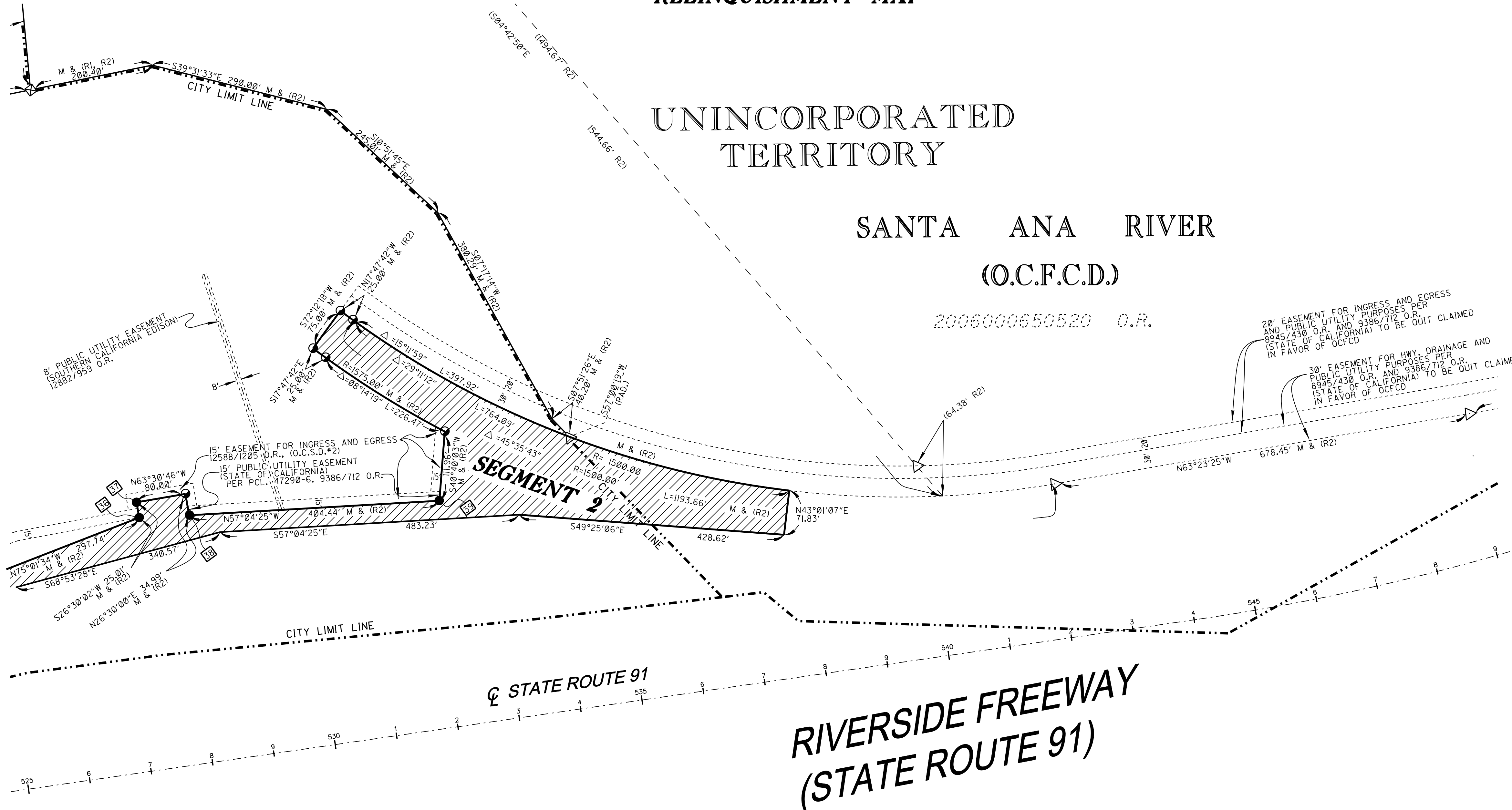
EXHIBIT A

STATE OF CALIFORNIA DISTRICT 12 - RIGHT OF WAY ENGINEERING RELINQUISHMENT MAP

UNINCORPORATED
TERRITORY

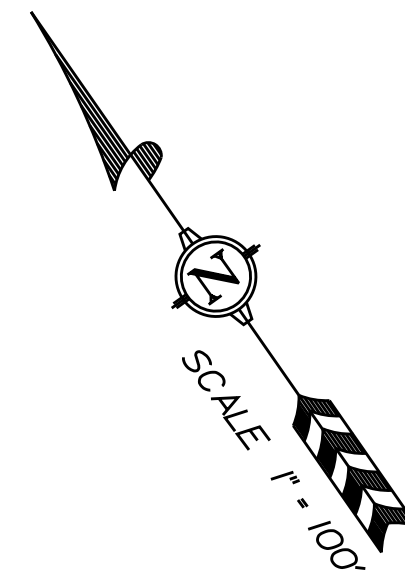
SANTA ANA RIVER
(O.C.F.C.D.)

2006000650520 O.R.



SHEET 6
SEE

SEE SHEET 1 FOR BASIS OF BEARINGS AND DATUM STATEMENT.
SEE SHEET 1 FOR MONUMENT NOTES AND RECORD REFERENCES.



DIST.	COUNTY	ROUTE	POST MILE	SHEET NO.	TOTAL SHEETS
12	ORA	91	14.90/18.90	7	7



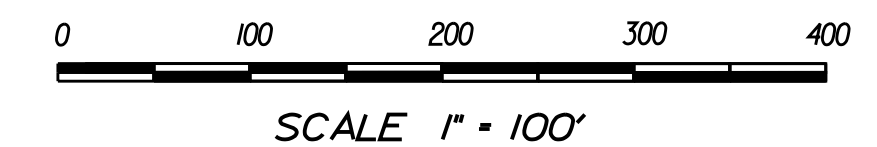
John D. Pavlik, Right of Way Engineering Manager
County of Orange - OC Public Works

GENERAL NOTES:

- STATE'S RIGHTS ARE NOT EXTINGUISHED UNTIL RECORDATION OF RELATED CALIFORNIA TRANSPORTATION COMMISSION RESOLUTION.
- THE BEARINGS SHOWN ARE BASED ON THE CALIFORNIA COORDINATE SYSTEM, NAD 83, ZONE 6 PER STATE OF CALIFORNIA, DEPARTMENT OF TRANSPORTATION RIGHT OF WAY MAP NO. _____
- THE DISTANCES AND STATIONING ARE GRID, MULTIPLY GRID DISTANCES SHOWN BY 1.0000446 TO OBTAIN GROUND DISTANCES.
- UPON PASSAGE AND RECORDATION OF A CALIFORNIA TRANSPORTATION COMMISSION RESOLUTION RELINQUISHING SEGMENTS 1 & 2 SHOWN ON THIS MAP, ANY RIGHT, TITLE, AND INTEREST HELD BY THE STATE IN AND TO SEGMENTS 1 & 2, SHALL TRANSFER TO THE ORANGE COUNTY FLOOD CONTROL DISTRICT AS SPECIFIED IN SAID CTC RESOLUTION. TO DETERMINE THE STATUS AND LOCATION OF ANY OTHER LINE SHOWN ON THIS MAP, CONSULT WITH THE RIGHT OF WAY RECORD MAPS AND RECORD DOCUMENTS, THAT CREATED AND OR MODIFIED THOSE LINES, ON FILE AT THE DEPARTMENT OF TRANSPORTATION, DISTRICT 12 OFFICE OR THE OFFICE OF THE ORANGE COUNTY RECORDER.

LEGEND:

AREA TO BE RELINQUISHED



STATE OF CALIFORNIA
BUSINESS AND TRANSPORTATION AGENCY
DEPARTMENT OF TRANSPORTATION

**PROPOSED RELINQUISHMENT
MAP NO. RI20032**
FOR RELINQUISHMENT TO THE COUNTY OF ORANGE

PREPARED BY: OCPW/ROWE/ J.V. CHECKED BY: OCPW/ROWE/J.D.P.

REFERENCE R/W MAPS: DATUM: NAD 83, ZONE 6 (1991.35 EPOCH)

E.A. 01400 REVISED DATE: 8/10/09 PRINT DATE: 8/10/09