

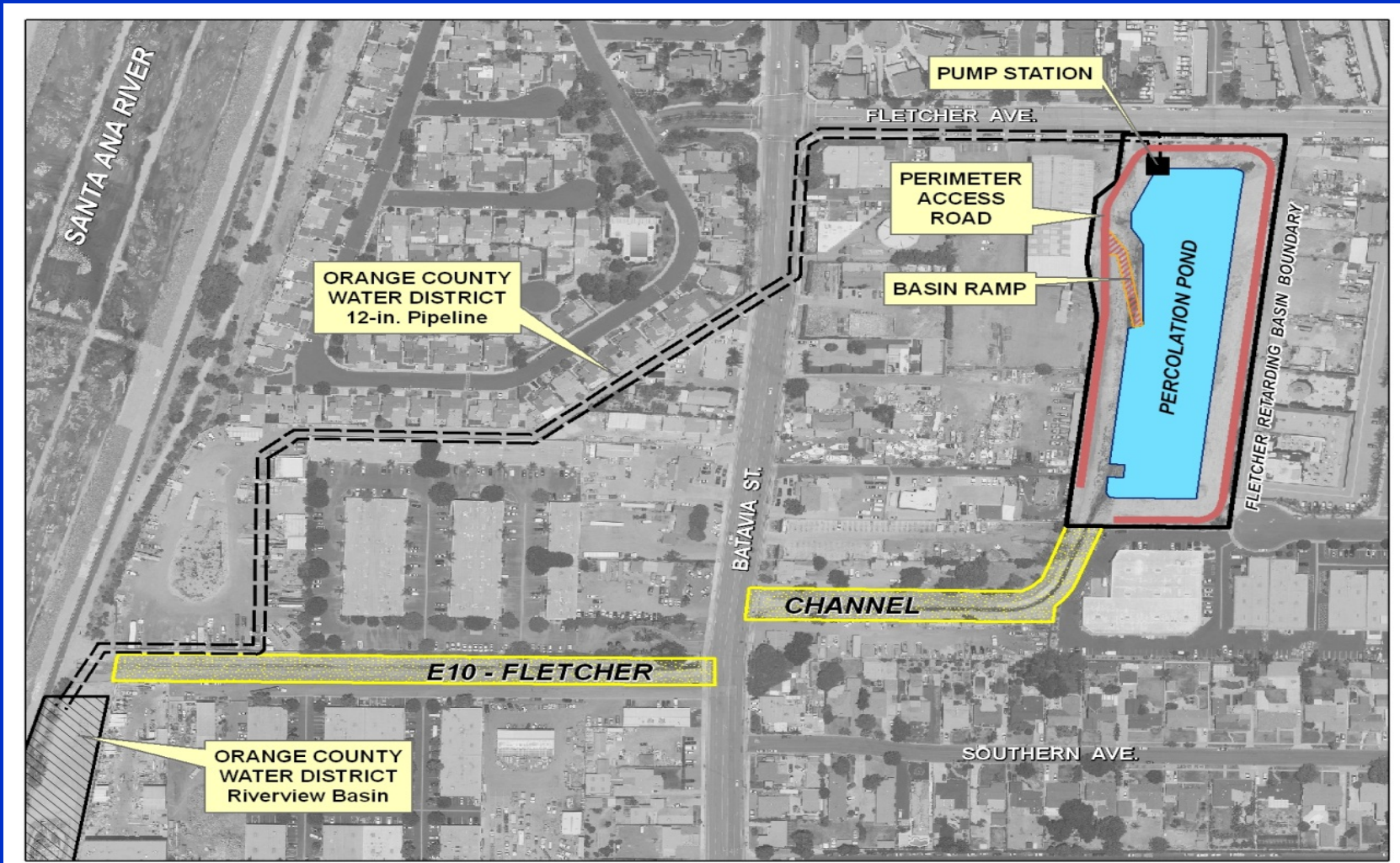
**Orange County Board of Supervisors**

**FLETCHER RETARDING  
BASIN PROJECT**

**May 1, 2012**



# Location Map



# Background

- Partnership with OCWD to support water conservation through groundwater recharging
- OCWD expending \$670,000 on feasibility, environmental, and other project costs
- OCWD's Project cost \$ 3.6 Million and OCFCD's Project Cost \$ 1.7 Million

# Benefits to OCFCD

- Size reduction for downstream channel and elimination of a channel through the basin site
- Smaller downstream Channel \$500,000 savings and no ultimate Channel within Basin Property \$800,000 savings
- Reduced potential for downstream flooding prior to completing future Channel improvement
- Fill in Basin can be used as cover at Landfill