

ORANGE COUNTY PARKS COMMISSION

STAFF REPORT

FROM: Mark Denny, Director, OC Parks

DATE: February 4, 2010

SUBJECT: Open Space Lands Transaction - Update No. 4


Document preparation and review, as described in Update No. 3, continues. Documents will be submitted to your Commission as they are ready.

Black Star Canyon Wilderness Park Draft Concept Plan

Approximately 2,000 acres of the Open Space Lands are proposed to be included in Black Star Canyon Wilderness Park. The park will include three staging areas to provide convenient access to approximately 15 miles of trails. A Draft Concept Plan for the park is attached. The Irvine Company and the Irvine Ranch Conservancy, as part of the Open Space Lands Transaction, will be responsible for the design, permitting and implementation of the improvements described in the Draft Concept Plan.

RECOMMENDED ACTION:

1. Receive and file Open Space Lands Transaction – Update No. 4.
2. Take public testimony and provide comments on: Black Star Canyon Wilderness Park Draft Concept Plan.



Mark Denny

Attachment: Black Star Canyon Wilderness Park Draft Concept Plan



**Black Star Canyon Wilderness Park
Draft Concept Plan
January 2010**

BLACK STAR CANYON WILDERNESS PARK DRAFT CONCEPT PLAN

January 2010

I. Introduction

As part of the over 20,000 acres of open space lands to be conveyed by the Irvine Company to the County of Orange (see Exhibit), approximately 2,000 acres are proposed to be included in Black Star Canyon Wilderness Park.

The park is designated as a future County regional park in the Recreation Element of the County's General Plan.

This Concept Plan is intended to provide a framework for further planning and design, leading to implementation of the improvements and opening of the park to the public.

Opportunities are described in the following section, and draft exhibits follow.

II. Opportunities

A. Establish strategies for making the area more welcoming:

- i. Stop roadside dumping along Black Star and Silverado Canyon Roads.
- ii. Deter non-authorized and destructive activities along Black Star Canyon Road (graffiti, vandalism, arson, etc.).
- iii. Improve public safety (increase supervision of activities and improve safety of public trail use).

B. Enhance community entry and reinforce positive value of area's wilderness:

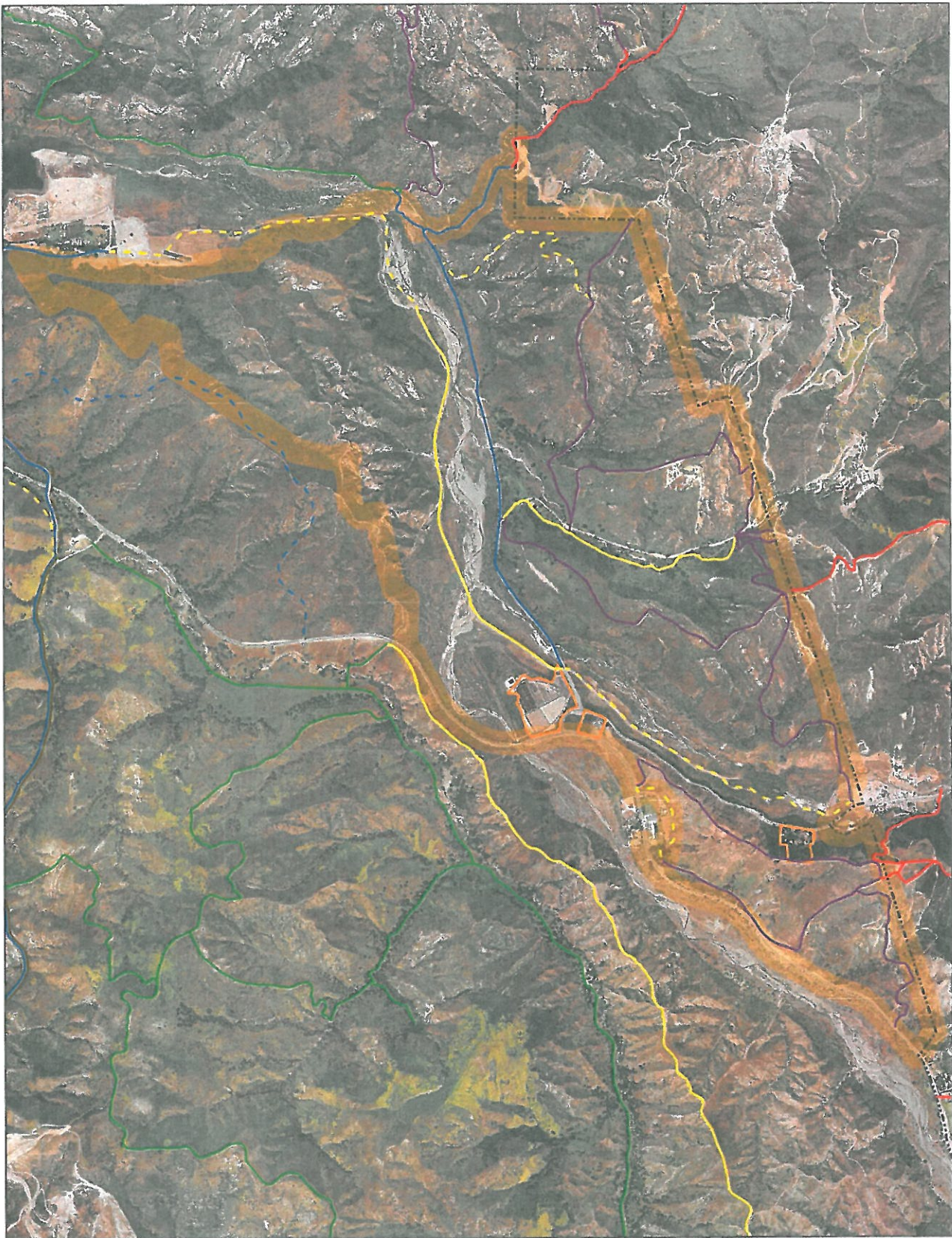
- i. Address signage at Silverado, Santiago and Black Star
 - a. Directional signage to area's designation
 - b. Silverado Community identity sign
 - c. Silverado Modjeska Wilderness identity sign
 - d. Removal of sign clutter at Silverado and Santiago.
- ii. Address fence design at Silverado and Black Star, set standards for other areas if appropriate.
- iii. Install additional native plants and trees at intersection and along roads to improve area's appearance.

C. Develop Public Facilities Master Plan Concept

- i. Identify public and private trails (existing, proposed and potential)
- ii. Identify staging areas (public and private)
- iii. Identify public parking solution for vehicles currently parking off-road along Black Star
- iv. Improve wildlife crossing at major creek under crossings on Black Star.

III. Draft Exhibits

- A. Aerial Map – Open Space Lands Transaction
- B. Aerial Map – Black Star Canyon Wilderness Park – with Trails
- C. Aerial Map – Black Star Canyon Wilderness Park – with Open Space Lands Transaction Parcels
- D. Overview – Park Improvements
- E. Entrance Road Improvements
- F. Silverado Canyon/Red Rocks Staging Area
- G. Baker Canyon Staging Area
- H. Black Star Canyon Staging Area
- I. New Creek Crossing – Project Elevations
- J. New Creek Crossing – Project Sections and Elevations



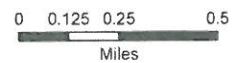
Black Star Canyon Wilderness Park

ACRES: 2,096
 STAGING AREAS: 3
 TRAIL MILEAGE: 15.3

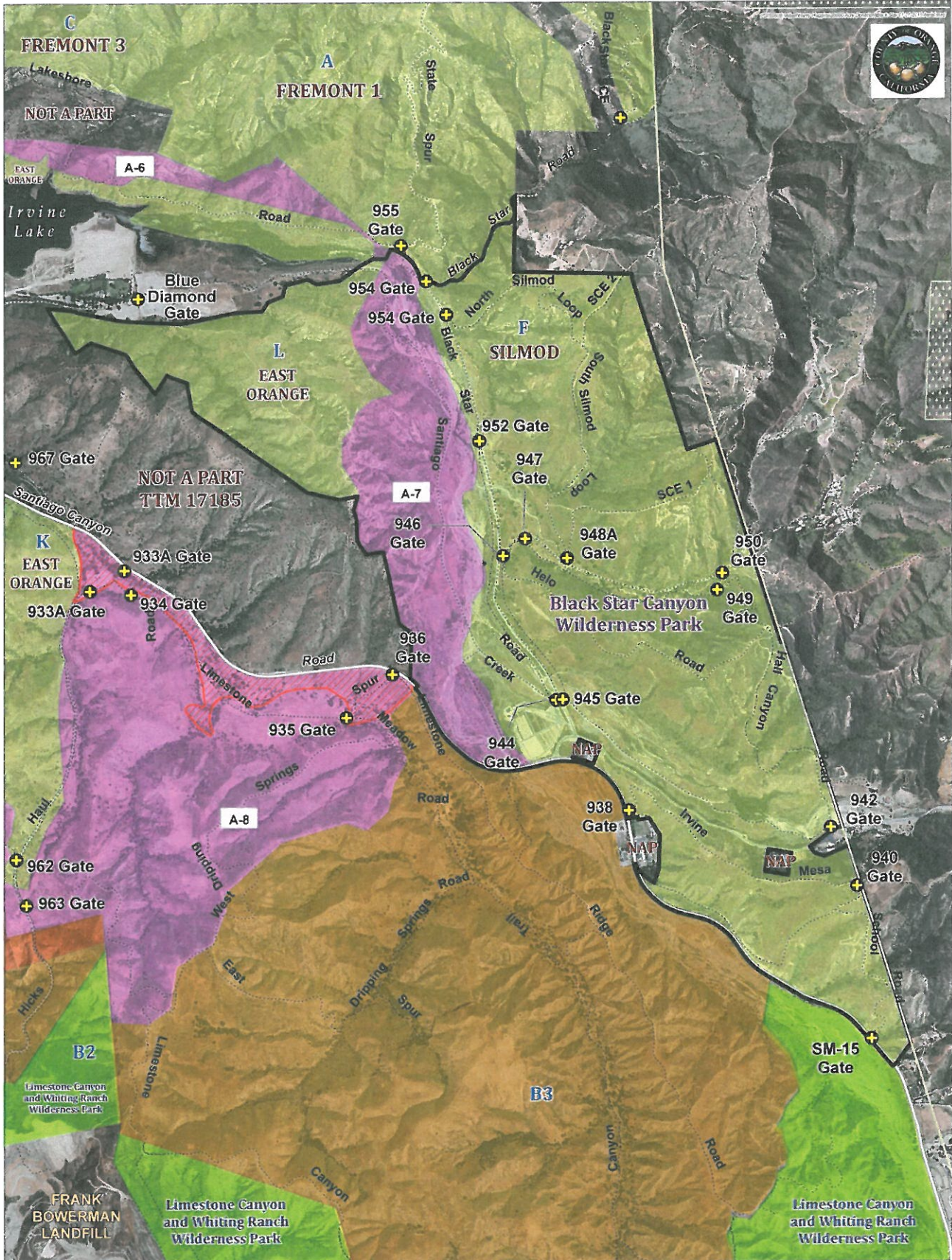
Legend

Trails

- Single Track
- Narrow Two Track
- Utility Road Trail
- Paved
- Unpaved Beside Paved
- Outside Irvine Ranch
- - - - Indicates Planned/Proposed



Map produced December 2008 IRC
 April 2008 Aerial



DESIGNED AND PRODUCED BY:
 OC Parks
 1111 N. Main Street
 Orange, CA 92668

DATA SOURCE:
 California Land Information System (CalGIS) - Single Sector 12311
 Irvine Geomatics and Data Support Contractors

The County of Orange and OC Parks do not warrant the accuracy or reliability of the information provided on this map. The County of Orange and OC Parks do not assume any liability for any errors or omissions on this map. The County of Orange and OC Parks do not assume any liability for any damages, including consequential damages, arising from the use of this map.

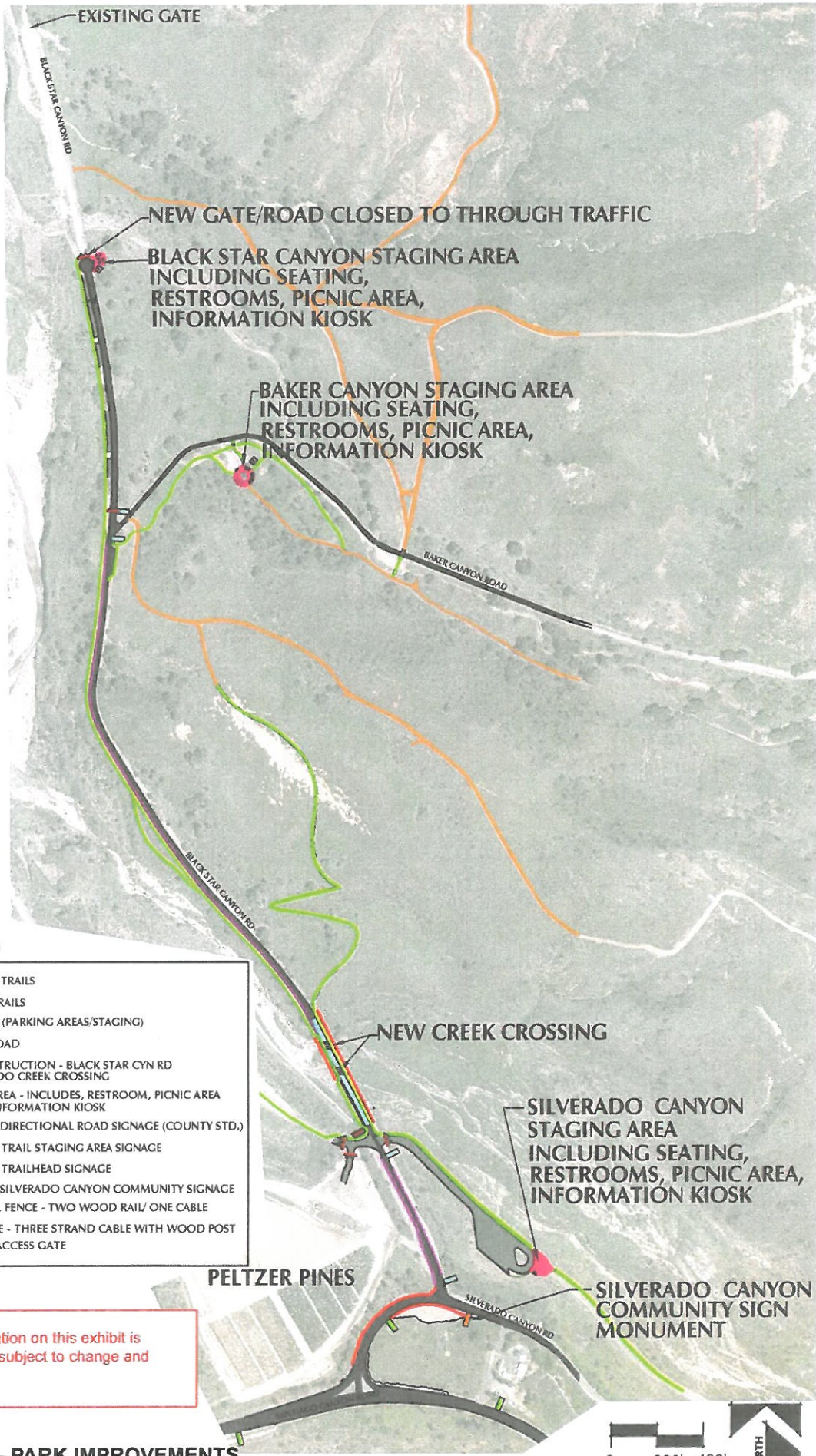
DATE: January 24, 2015



- IOC to County of Orange - NCCP Reserve
- TNC Conservation Easement Lands
- NCCP Reserve
- NOT NCCP Reserve
- Orange County Parks
- North Irvine Open Space and Irvine Open Space Preserve South
- Cleveland National Forest
- Trails

**Black Star Canyon
 Wilderness Park**

OC parks



LEGEND

- PROPOSED TRAILS
- EXISTING TRAILS
- ROAD BASE (PARKING AREAS/STAGING)
- ASPHALT ROAD
- NEW CONSTRUCTION - BLACK STAR CYN RD AT SILVERADO CREEK CROSSING
- STAGING AREA - INCLUDES, RESTROOM, PICNIC AREA SEATING, INFORMATION KIOSK
- PROPOSED DIRECTIONAL ROAD SIGNAGE (COUNTY STD.)
- PROPOSED TRAIL STAGING AREA SIGNAGE
- PROPOSED TRAILHEAD SIGNAGE
- PROPOSED SILVERADO CANYON COMMUNITY SIGNAGE
- THEME RAIL FENCE - TWO WOOD RAIL/ ONE CABLE
- TRAIL FENCE - THREE STRAND CABLE WITH WOOD POST
- LOCKABLE ACCESS GATE

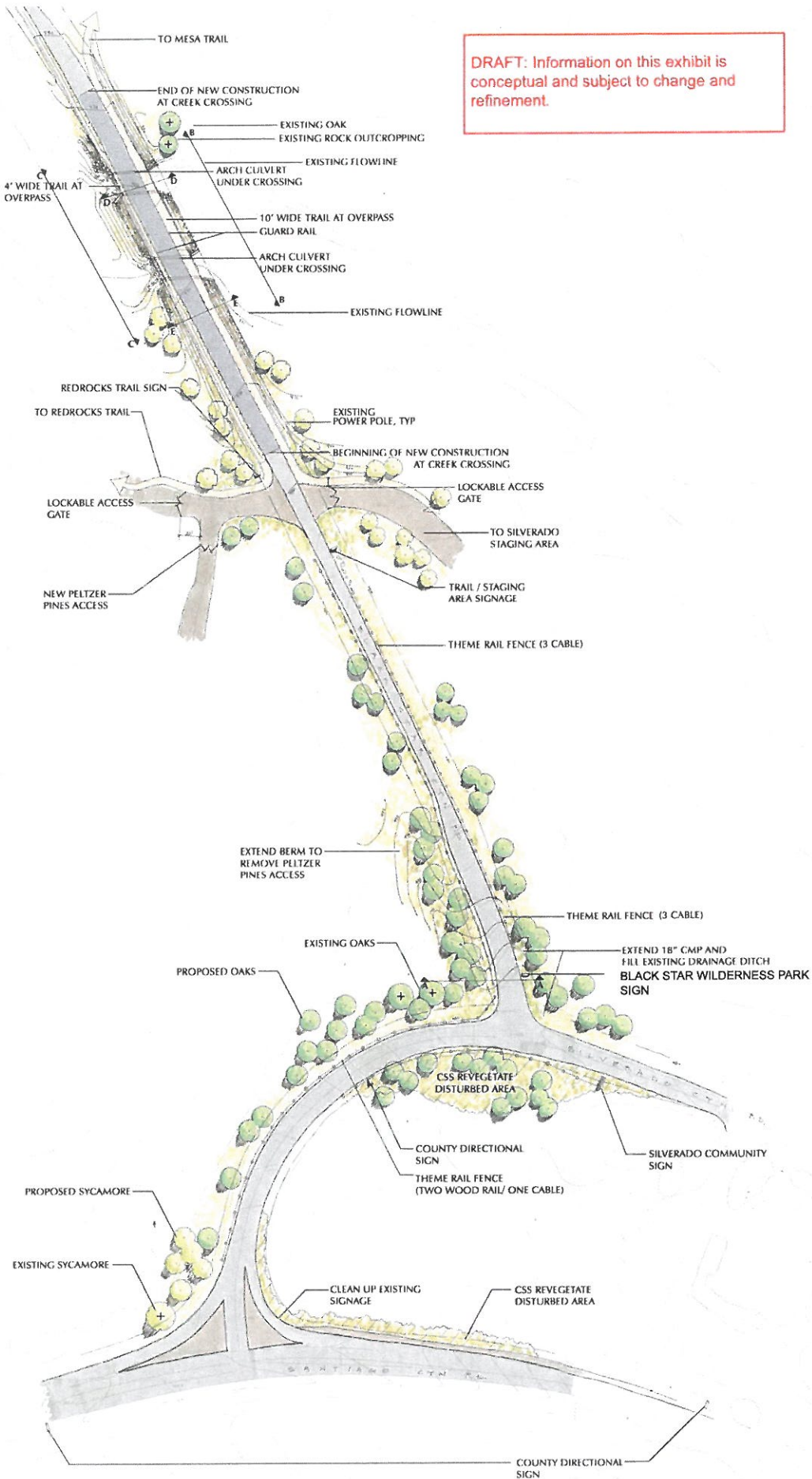
DRAFT: Information on this exhibit is conceptual and subject to change and refinement.

OVERVIEW - PARK IMPROVEMENTS CONCEPT PLAN



© EAGLE AERIAL - FLOWN APRIL 2006

DRAFT: Information on this exhibit is conceptual and subject to change and refinement.



ENTRANCE ROAD IMPROVEMENTS
CONCEPT PLAN

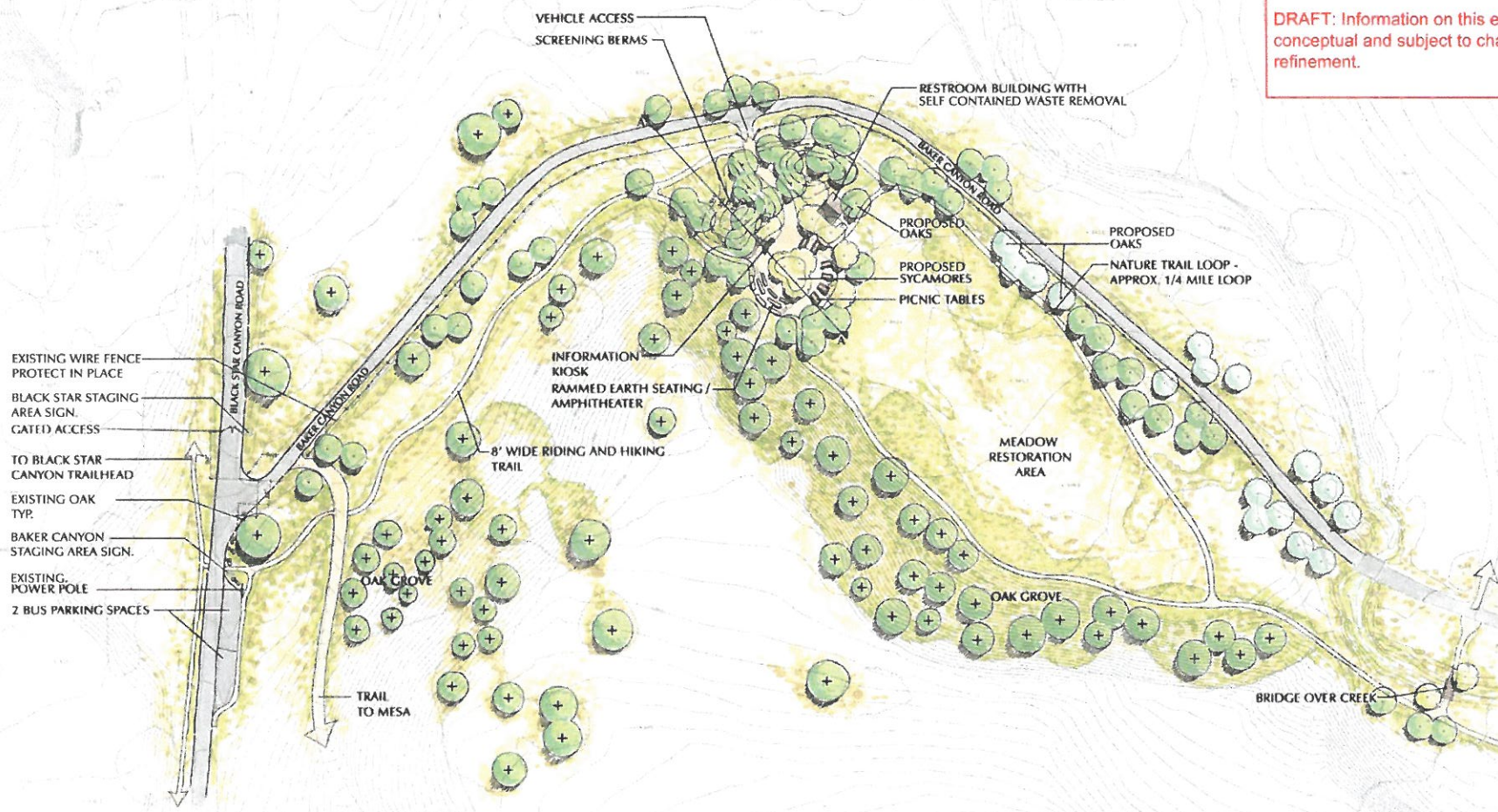


DRAFT: Information on this exhibit is conceptual and subject to change and refinement.



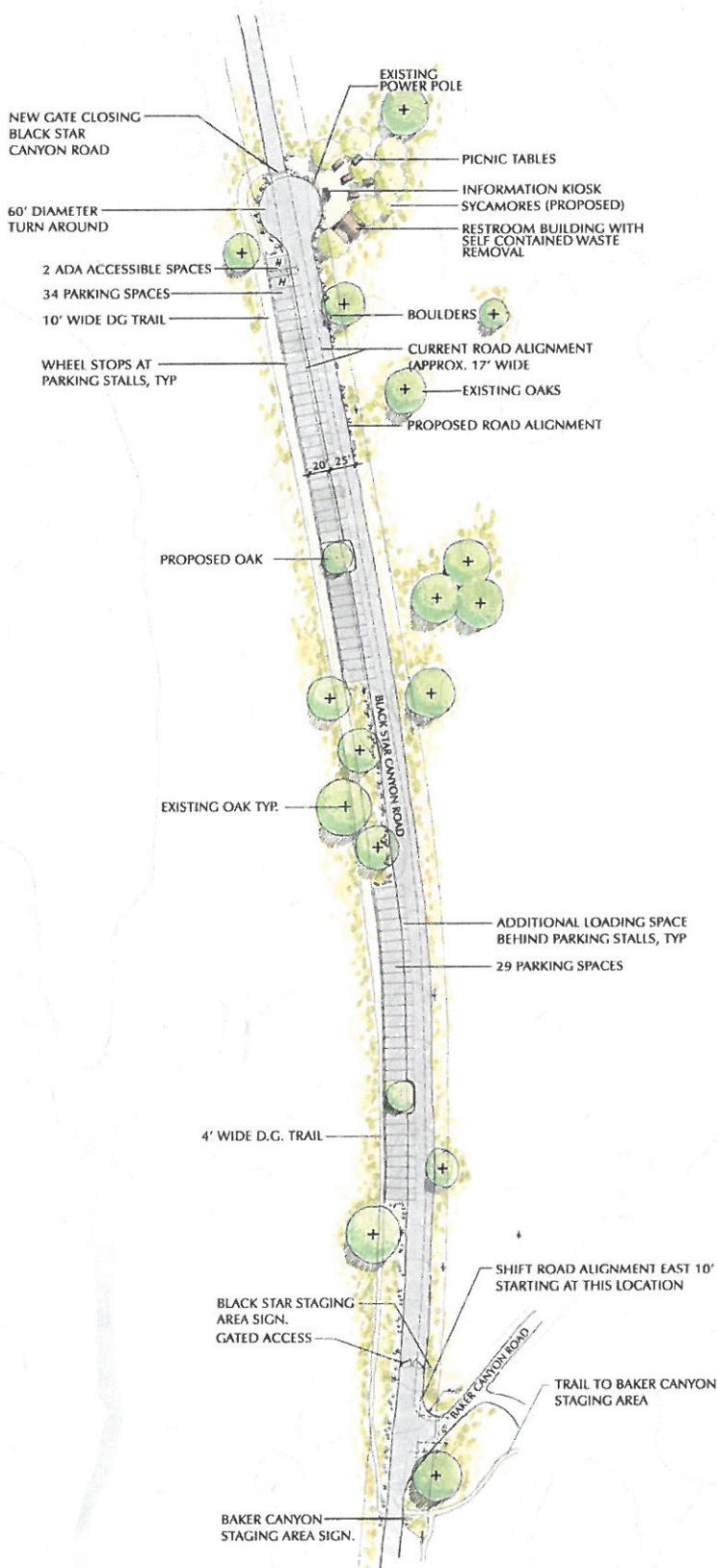
SILVERADO CANYON / RED ROCKS STAGING AREA
CONCEPT PLAN

DRAFT: Information on this exhibit is conceptual and subject to change and refinement.

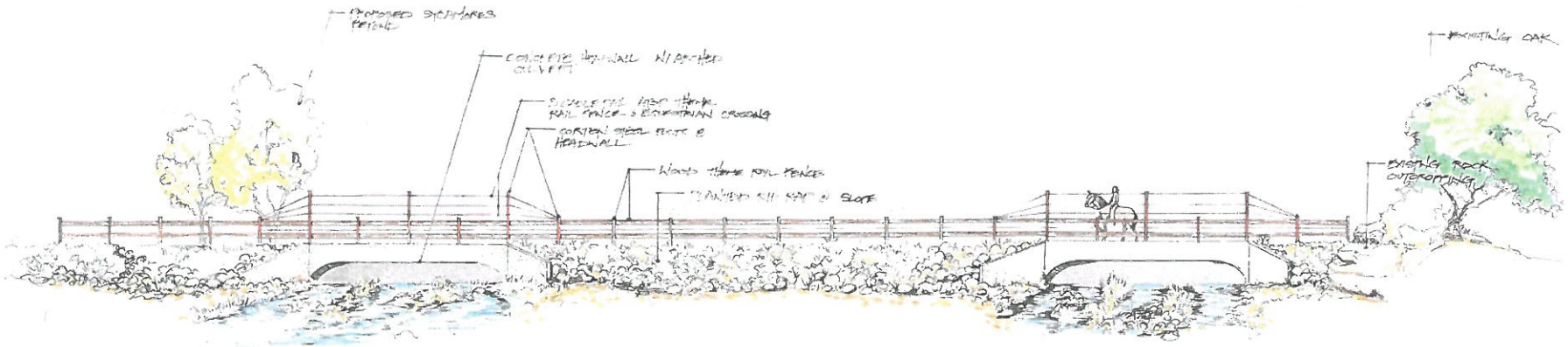


BAKER CANYON STAGING AREA
CONCEPT PLAN

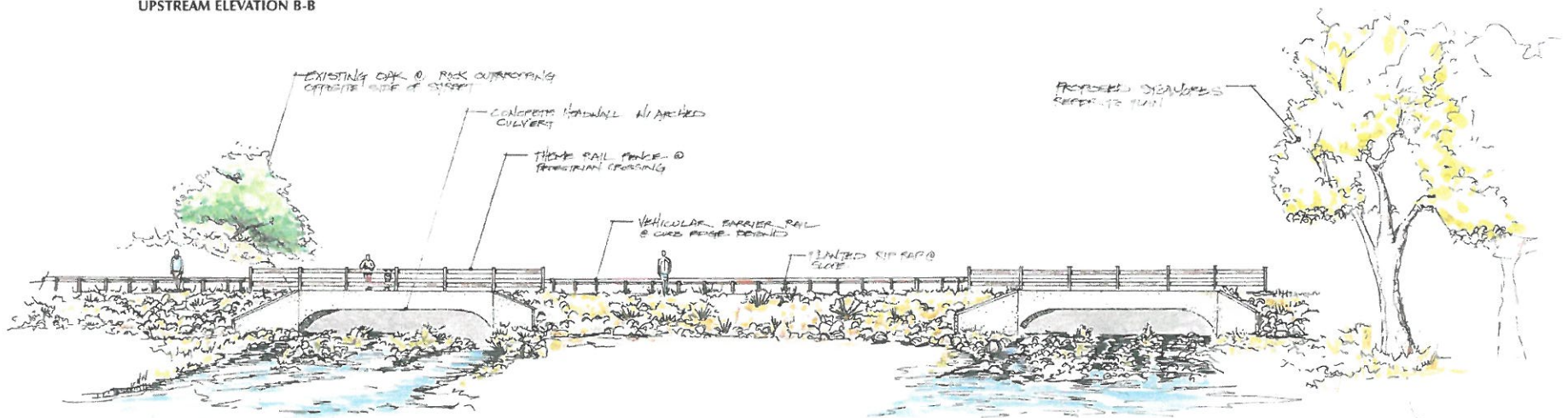




CAUTION: Information on this exhibit is
 conceptual and subject to change and
 refinement.



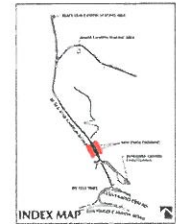
UPSTREAM ELEVATION B-B

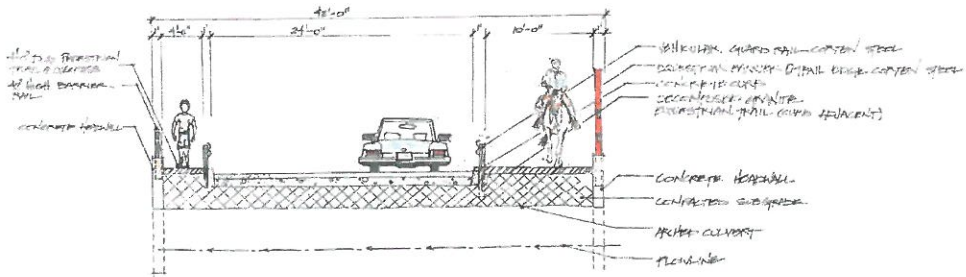


DOWNSTREAM ELEVATION C-C

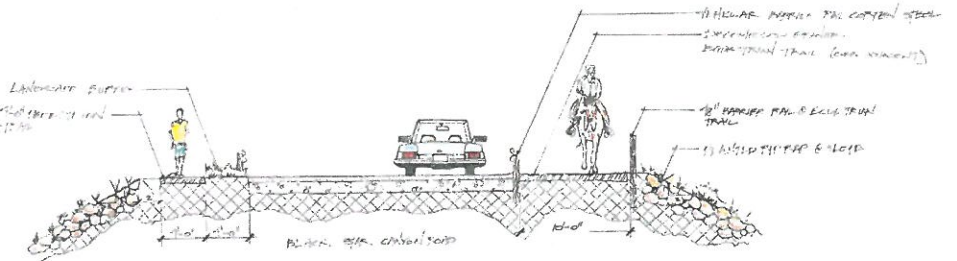
DRAFT: Information on this exhibit is conceptual and subject to change and refinement.

NEW CREEK CROSSING
PROJECT ELEVATIONS

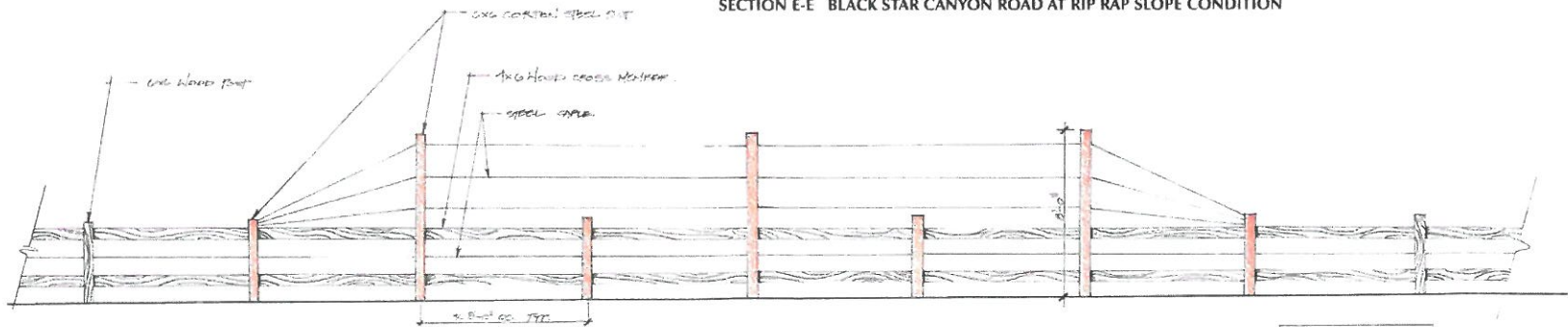




SECTION D-D BLACK STAR CANYON RD AT ARCH CULVERT UNDER-



SECTION E-E BLACK STAR CANYON ROAD AT RIP RAP SLOPE CONDITION



ELEVATION - OPTION A
SCALE: 1/8\"/>

ELEVATION - EQUESTRIAN BARRIER RAIL AT UNDER CROSSING

DRAFT: Information on this exhibit is conceptual and subject to change and refinement.

NEW CREEK CROSSING
PROJECT SECTIONS AND ELEVATIONS

