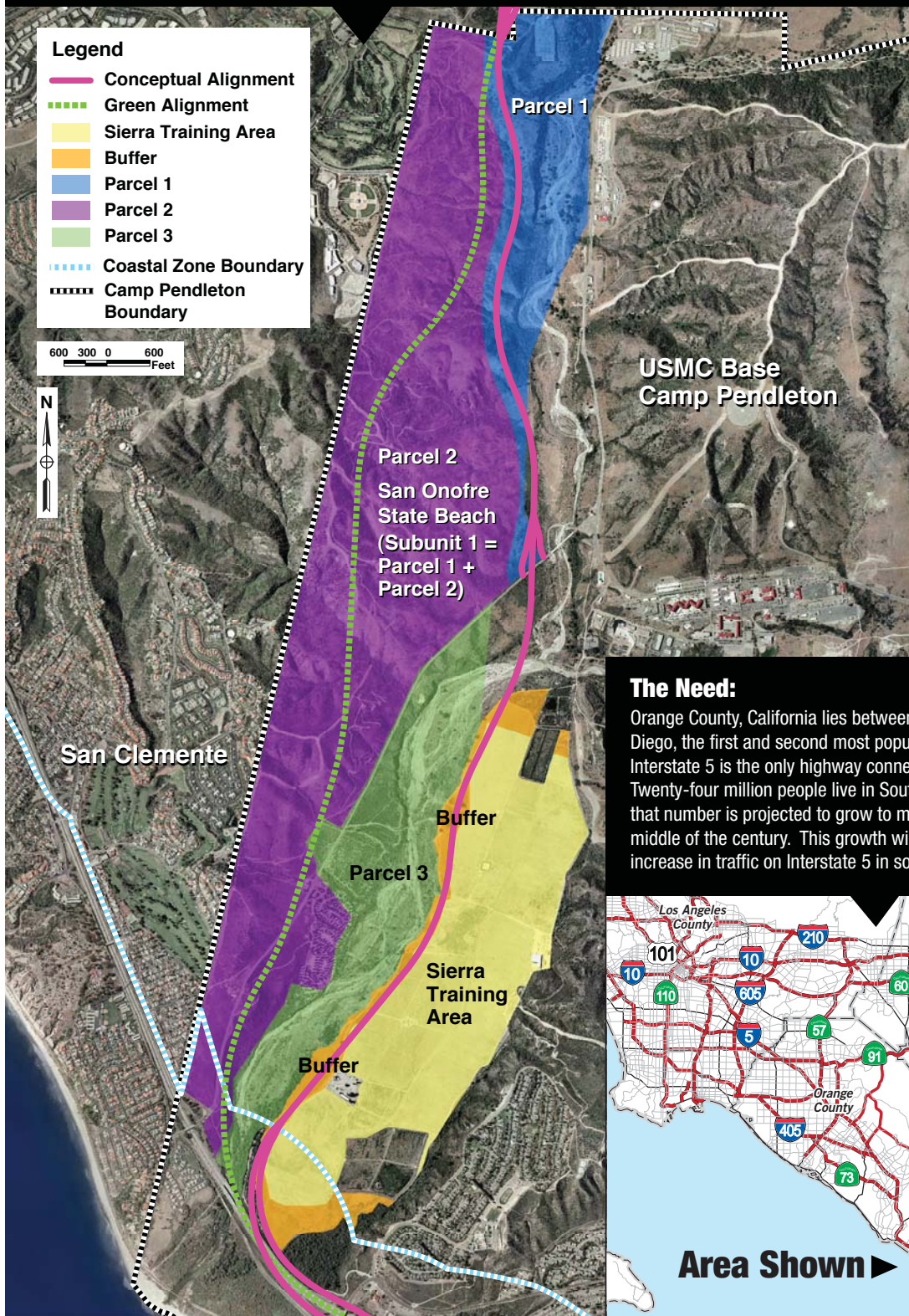


## Concept for Completing the 241 Toll Road:

This map shows the relationship between the concept alignment (pink) and the previous alignment (green dotted). It also shows how the concept alignment passes the proposed Sierra Training Area and how state park leasehold property could be exchanged.



### The Need:

Orange County, California lies between Los Angeles and San Diego, the first and second most populous counties in the state. Interstate 5 is the only highway connecting the two counties. Twenty-four million people live in Southern California today and that number is projected to grow to more than 30 million by the middle of the century. This growth will result in a 60 percent increase in traffic on Interstate 5 in southern Orange County.



November 2009

Transportation Corridor Agencies, 125 Pacifica, Irvine CA 92618  
[thetollroads.com](http://thetollroads.com)