



4th District Bikeways Collaborative



The Fourth Supervisorial District Bikeways Collaborative is a coordinated planning effort led by Fourth District Supervisor Shawn Nelson.

Partners:

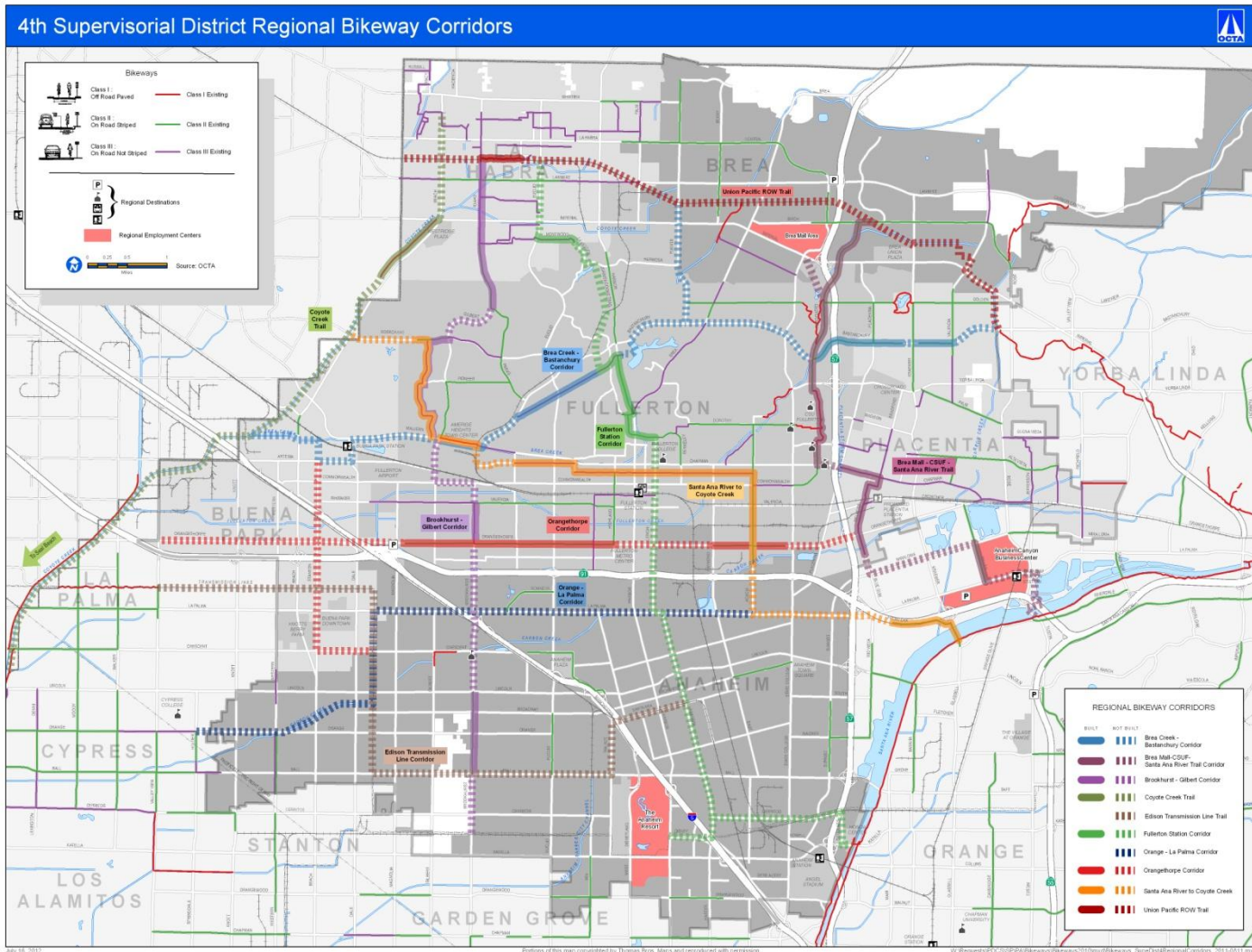
- Orange County Transportation Authority
- The County of Orange
- Caltrans
- Air Quality Management District
- The cities of Anaheim, Brea, Buena Park, Fullerton, La Habra, Placentia

Result: Identified ten regional bikeway corridors that connect major activity areas such as employment centers, transit stations, colleges, and universities.

2011 - 2012
Collaborative with OCTA
How did we get there?

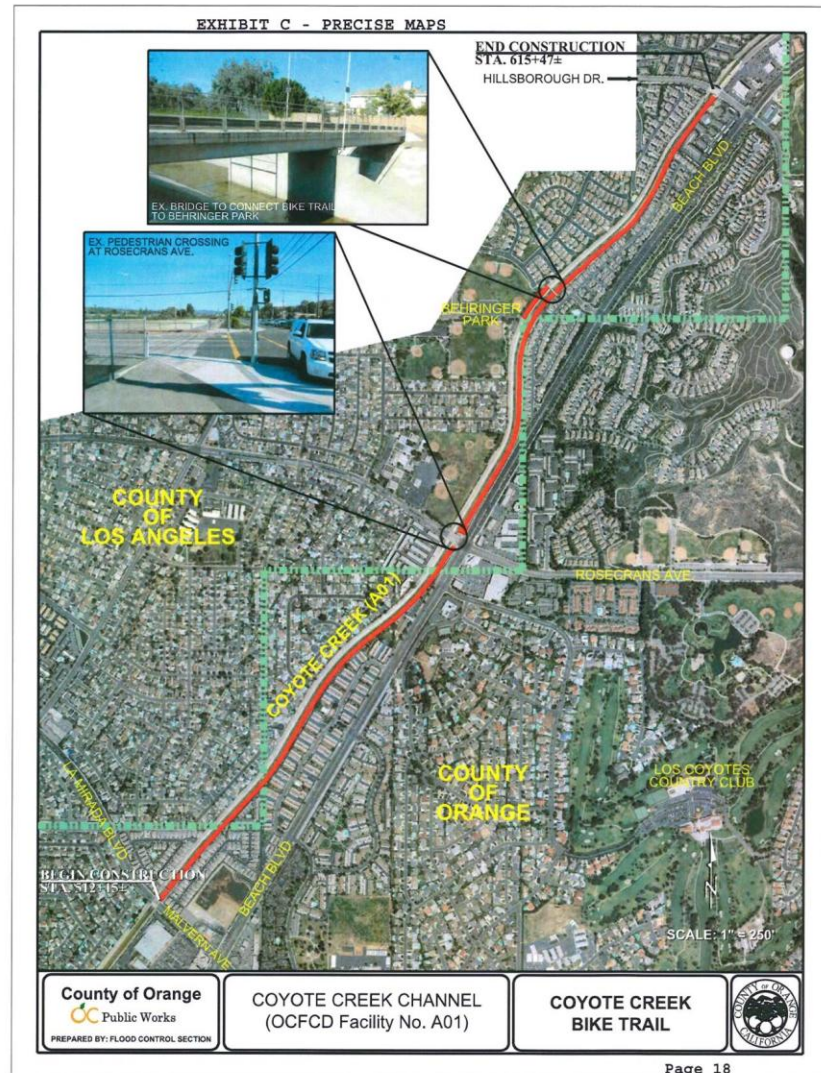
- ❑ Technical Meetings
- ❑ Bikeway Summits
- ❑ Stakeholder Roundtable
- ❑ Open House
- ❑ Online Survey

North OC Identified Corridors



Coyote Creek Trail

- The most current project underway is the improvement of Coyote Creek. This north-south Class I bikeway corridor would follow the Coyote Creek corridor from its current terminus at Hillsborough Drive south to the southern segment of the existing Coyote Creek bikeway near Valley View Avenue. The corridor is located along the OC-LA county line and traverses between counties.

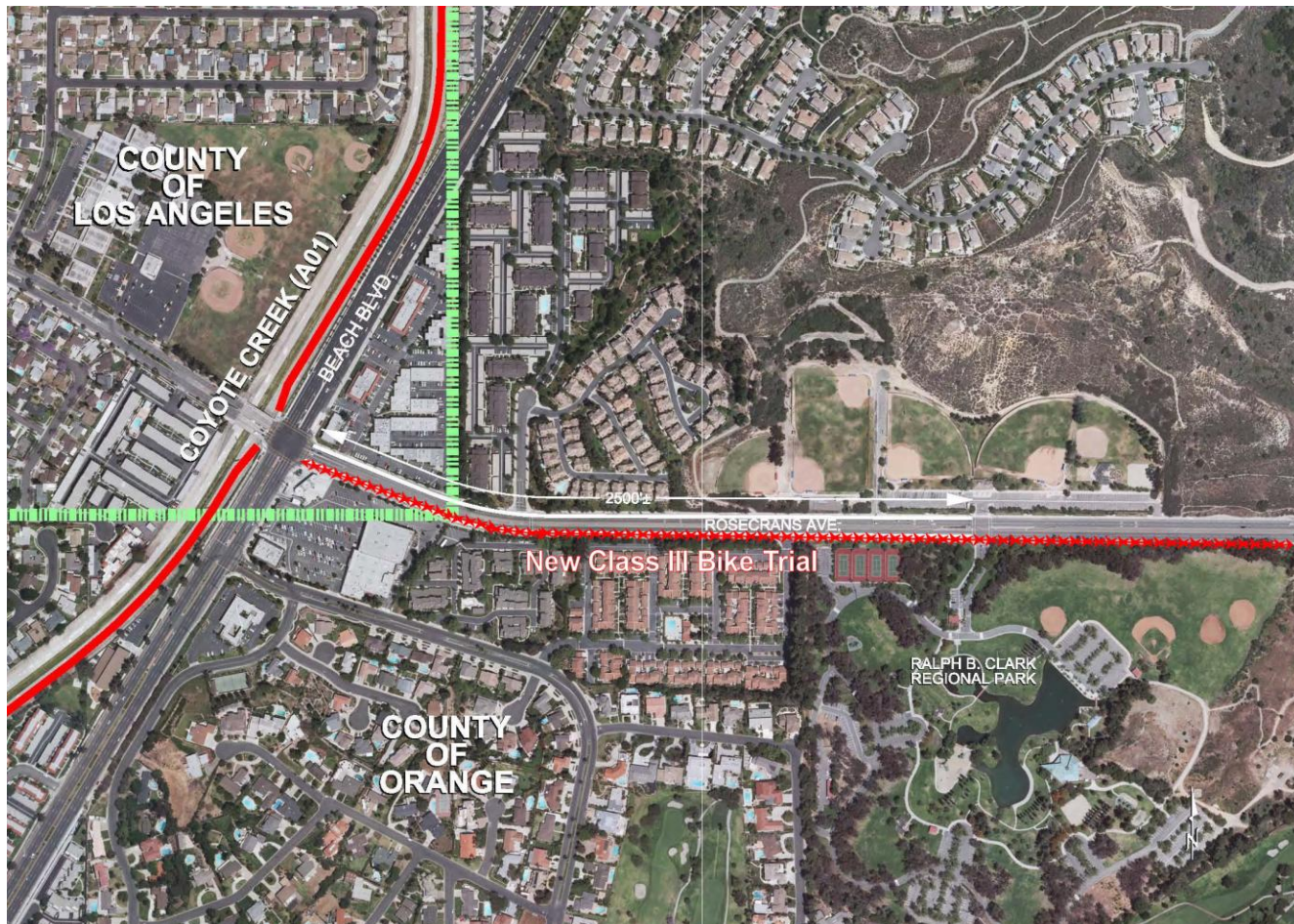


Details – Coyote Creek Trail

- 2 Miles proposed segment
 - Malvern Ave to Hillsborough Dr.
- Project Completion = Fall 2013
(pending OCTA Grant Award)
- Bikeway will be constructed by the County of Orange, but maintained by cities

Rosecrans Avenue

- Rosecrans Avenue will tie into Ralph B. Clark Regional Park



Proposed Funding

- \$400K Pre-construction Expended to Date
 - Design, Land Surveys and Environmental Documentation Completed in-house
- \$1.5M Estimated Total Construction Cost
 - Seeking \$1M OCTA bikeway grant
 - County match \$500K
 - Buena Park & Fullerton will fund re-stripping of Rosecrans Avenue to Ralph B Clark Park

Next Steps

- OCTA Grant award announcements in August 2012
- Federal Authorization to Proceed with Construction (E-76) by February 2013
- Maintenance Agreements
- Project Completion Fall 2013
- Complete Final Gap (Malvern to W. of Valley View)

4th Supervisorial District Regional Bikeway Corridors

Bikeways

- Class I: Off Road Paved
- Class II: On Road Shaded
- Class III: On Road Not Shaded
- Class I Existing
- Class II Existing
- Class III Existing

Regional Destinations

Regional Employment Centers

Regional Bikeway Corridors

- Built
- Not Built
- Coyote Creek Trail Corridor
- Other Corridors

Corridors:

- Orange Trail
- Santa Ana River to Coyote Creek
- Fullerton
- Brea
- Yorba Linda
- Placentia
- Orange
- Garden Grove
- Stanton
- Los Alamitos
- Cypress
- Villa Park

Legend:

- Class I: Off Road Paved
- Class II: On Road Shaded
- Class III: On Road Not Shaded
- Class I Existing
- Class II Existing
- Class III Existing
- Regional Destinations
- Regional Employment Centers
- Regional Bikeway Corridors
- Built
- Not Built
- Coyote Creek Trail Corridor
- Other Corridors

Map Labels:

- Orange Trail
- Santa Ana River to Coyote Creek
- Fullerton
- Brea
- Yorba Linda
- Placentia
- Orange
- Garden Grove
- Stanton
- Los Alamitos
- Cypress
- Villa Park

Scale: 0 0.25 0.5 1 Miles

Source: OCTA

Map Date: 11/11/2012

Map Copyright: This map was copyrighted by Thomas Bros. Maps and reproduced with permission.

Map License: W:\Bikeways\4th Supervisorial District\4th Supervisorial District Regional Bikeway Corridors_2012_0111