



*Irvine Lake Dam*

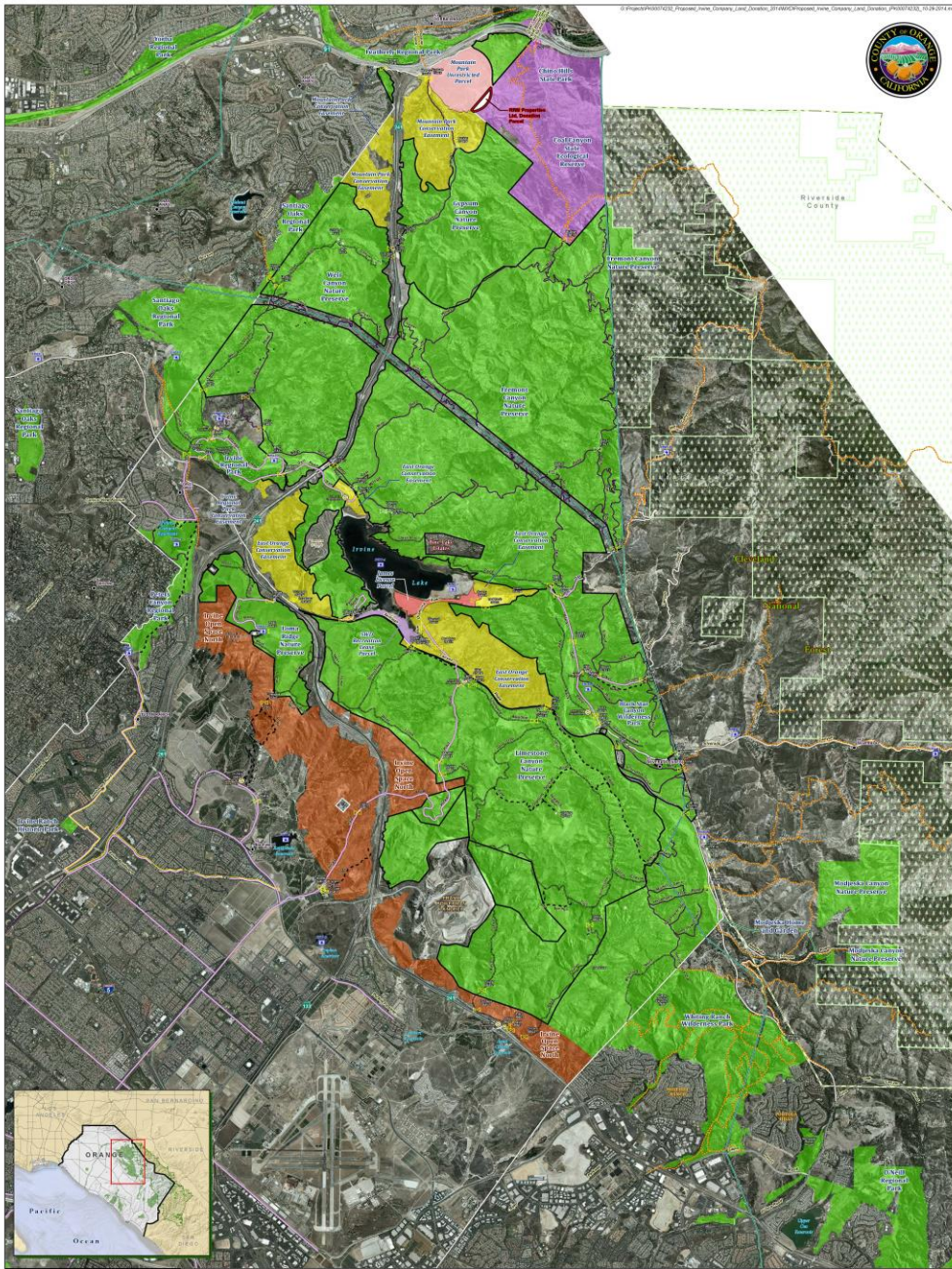
2014 IRVINE RANCH LAND DONATION



# Transaction Overview

- 2,500 ac. offered by Irvine Company (TIC):
  - Mountain Park, near 241 and 91 abutting Weir Canyon open space
  - Santiago Hills II, eastern edge of Irvine Regional Park
  - East Orange I, between Santiago Cyn Rd and Landfill
  - East Orange II, eastern edge of Irvine Lake
- 15.7 ac. offered by RRM Properties (RRM):
  - Mountain Park-adjacent
- 2,000 ac. conservation easements
  - Offered to Orange County Parks Foundation (OCPF)
- Rights and Licenses in East Orange II:
  - James Productions License
  - IOD for access easements, recreation rights, and Serrano lease

# 2014 Irvine Ranch Land Donation



Proposed  
Land Donations



DESIGNED AND PRODUCED BY:  
OC Parks  
2014

**DATA SOURCES:**  
Aerial Imagery: Information Systems Business - Eagle View (2013)  
Topographic Data: USGS National Elevation Dataset  
The County of Orange and OC Parks Property Maps (2014) include all improvements and boundaries reported to the Department of Planning of the OC Assessor's Office (2013) and the 2014 Irvine Ranch Property Map (2014). Where necessary, updates to the map were made to reflect the most current data available as of the date of printing. The County of Orange and OC Parks are not responsible for any errors or omissions on this map.

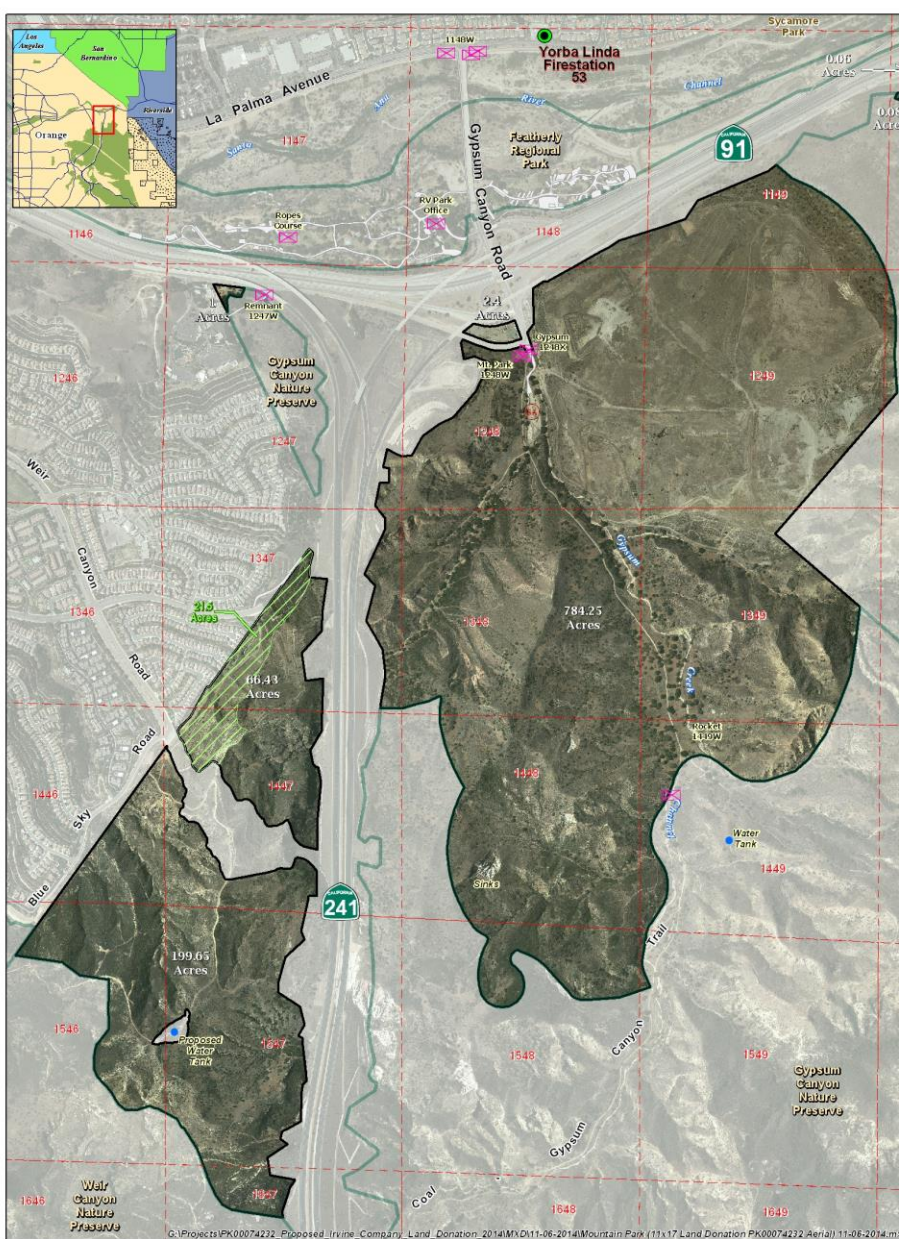
DATE: October 29, 2014



Status	Trail Type	Property
Existing Gates	Single Track Trail	Existing OC Parks Facilities
Future Gates	Two Track Trail	With Conservation Easement
Non-IRC Gates	Pathed	Without Conservation Easement
Staging Areas	Utility	Irvine Open Space
Landmarks	Unimproved Beside Pathed	Irvine Ranch Boundary
Helicopter Landing Zones	Outside Irvine Ranch	State of California
Fire Stations	Outside Irvine Ranch	Deverland Nature Forest
	Transmission Lines	



# Mountain Park



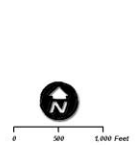
G:\Projects\PK00074222 - Proposed Irvine Company Land Donation 2014\Map\011-06-2014\Mountain Park (11x17 Land Donation PK00074222 Aerial) 11-06-2014.mxd

**DESIGNED AND PRODUCED BY:**  
 OC Parks GIS  
 Albert Luciani

**DATA SOURCE:**  
 - Geomatics Land Information Systems Division - 2014 Eagle Aerial

The County of Orange and OCCRI/OC Parks/Survey/GIS/LIS make no representations or warranties regarding the registration or accuracy of the data from which this map was derived. Neither the County nor OCCRI/OC Parks/Survey/GIS/LIS shall be liable under any circumstances for any direct, indirect, special, incidental or consequential damages with respect to any claim by any user or any third party on account of or arising from the use of this map.

**DATE:** November 06, 2014



- Fire Station
- Gates
- Staging Area
- District Grid
- V-Ditch (HOA Responsibility)

  
**Mountain Park**  




# *Mountain Park*



2014 IRVINE RANCH LAND DONATION



# *Mountain Park*



2014 IRVINE RANCH LAND DONATION



# *Mountain Park*



2014 IRVINE RANCH LAND DONATION



# *Mountain Park*



2014 IRVINE RANCH LAND DONATION



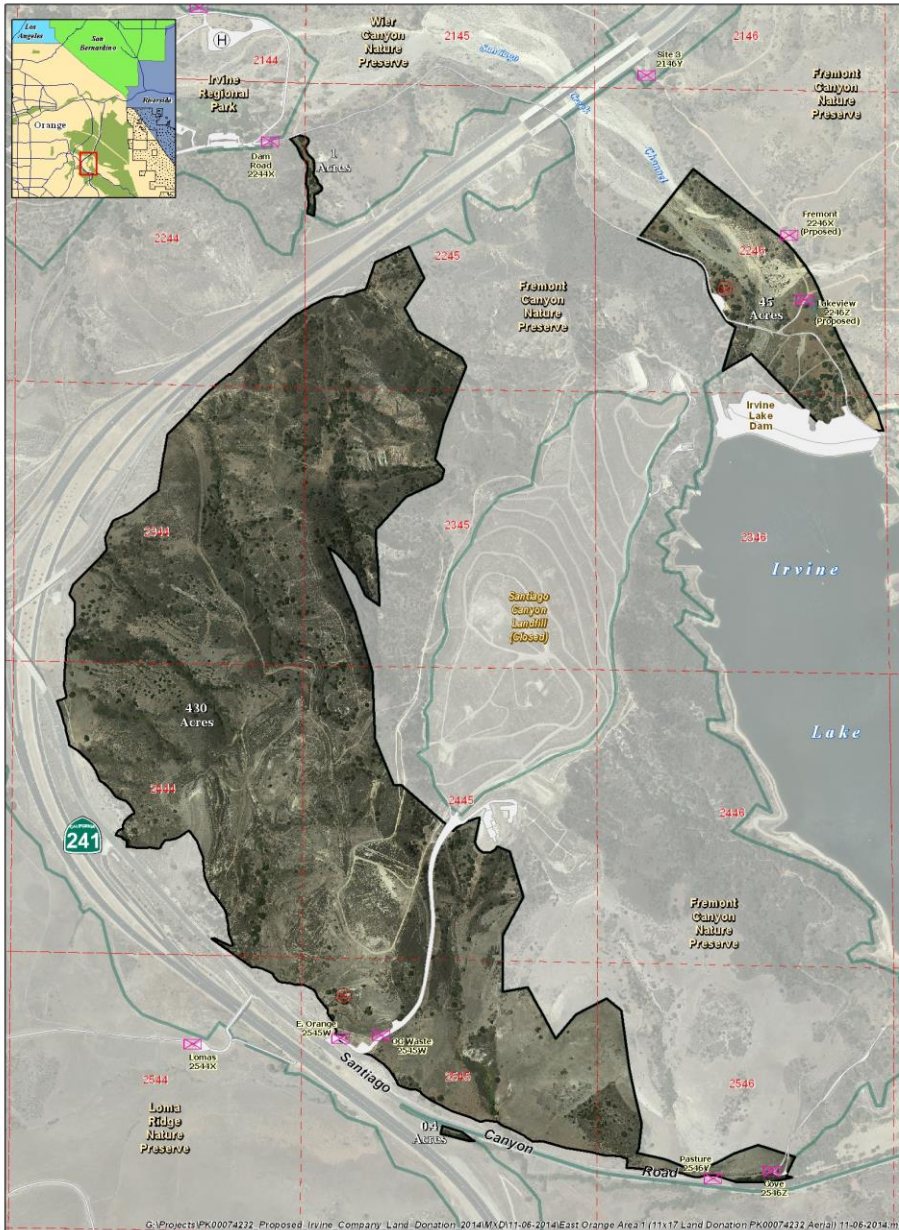


*Possible Mountain Park Staging Area*

2014 IRVINE RANCH LAND DONATION



# East Orange I







DESIGNED AND PRODUCED BY:  
 OC Parks GIS  
 Albert Lopez

DATA SOURCE:  
 - Geomatics Land Information Systems Division - 2014 Eagle Aerial

The County of Orange and OCCRID Park/Survey/GIS/US make no representations or warranties regarding the registration or accuracy of the data from which this map was derived. Neither the County nor OCCRID Park/Survey/GIS/US shall be liable under any circumstances for any direct, indirect, special, incidental or consequential damages with respect to any claim by any user or any third party on account of or arising from the use of this map.

DATE: November 06, 2014

	Staging Area
	Helicopter Zones
	Gates
	District Grid

0 500 1000 Feet

oc parks

## East Orange Area I




# *East Orange I*



2014 IRVINE RANCH LAND DONATION



# *East Orange I*



2014 IRVINE RANCH LAND DONATION



# *East Orange I*

2014 IRVINE RANCH LAND DONATION



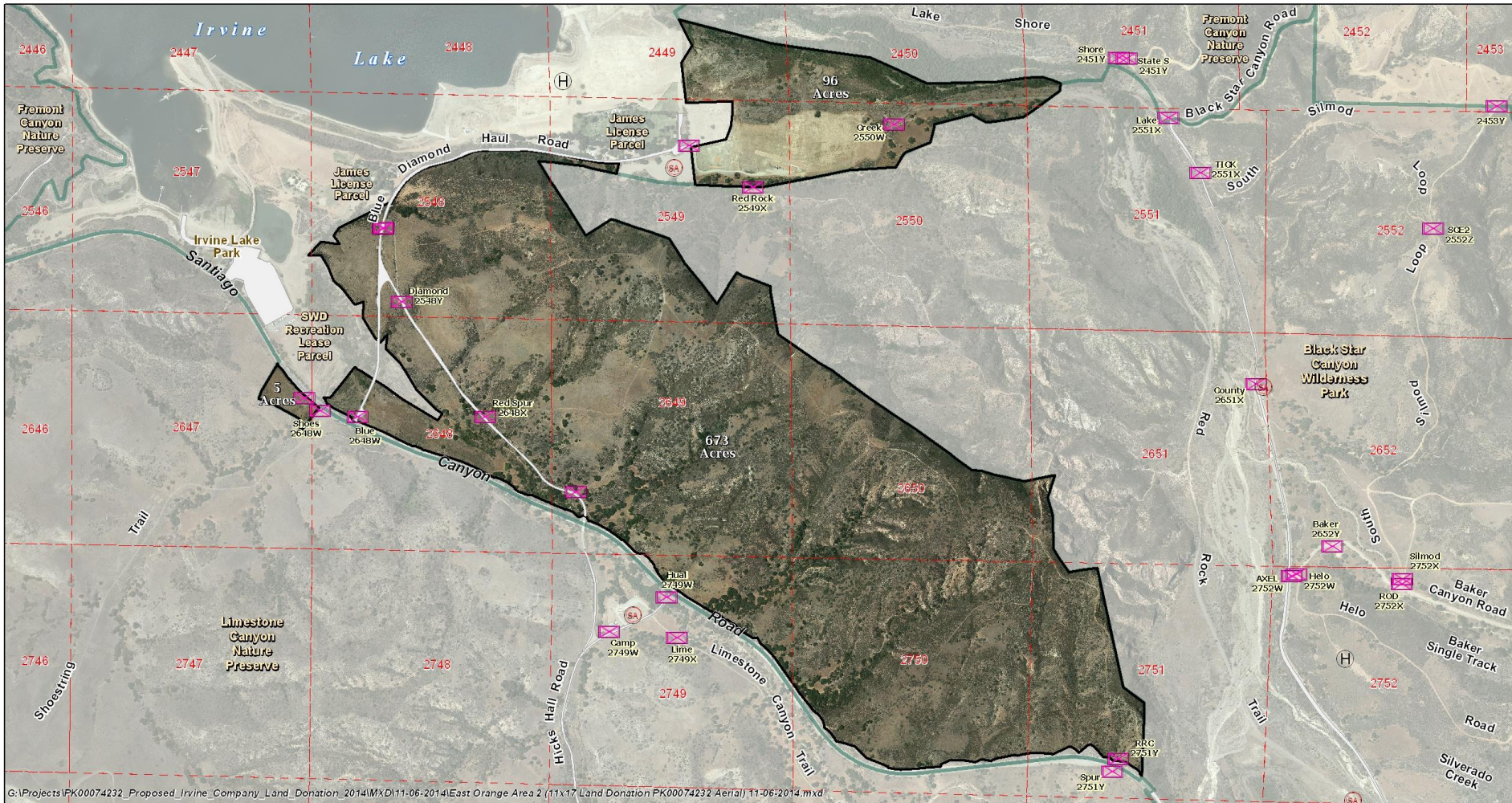
# *Possible East Orange I Staging Area*



2014 IRVINE RANCH LAND DONATION



# East Orange II



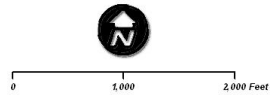
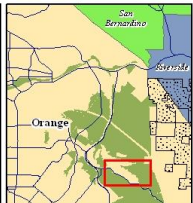
G:\Projects\PK00074232\_Proposed\_Irvine\_Company\_Land\_Donation\_2014\MXD\11-06-2014\East Orange Area 2 (11x17 Land Donation\PK00074232 Aerial) 11-06-2014.mxd

DESIGNED AND PRODUCED BY:  
 OCCRR  
 OC Parks GIS  
 Albert Lacey

DATA SOURCE:  
 - Geomatics Land Information Systems Division - 2014 Eagle Aerial

The County of Orange and OCCRR/OC Parks/GIS/ALIS make no representations or warranties regarding the registration or accuracy of the data from which this map was derived. Neither the County nor OCCRR/OC Parks/GIS/ALIS shall be liable under any circumstances for any direct, indirect, special, incidental or consequential damages with respect to any claim by any user or any third party on account of or arising from the use of this map.

DATE: November 06, 2014



- SA Staging Area
- H Helicopter Zones
- X Gates
- District Grid

## East Orange Area II



# *East Orange II*



2014 IRVINE RANCH LAND DONATION





*East Orange II*



2014 IRVINE RANCH LAND DONATION



# *East Orange II*



2014 IRVINE RANCH LAND DONATION



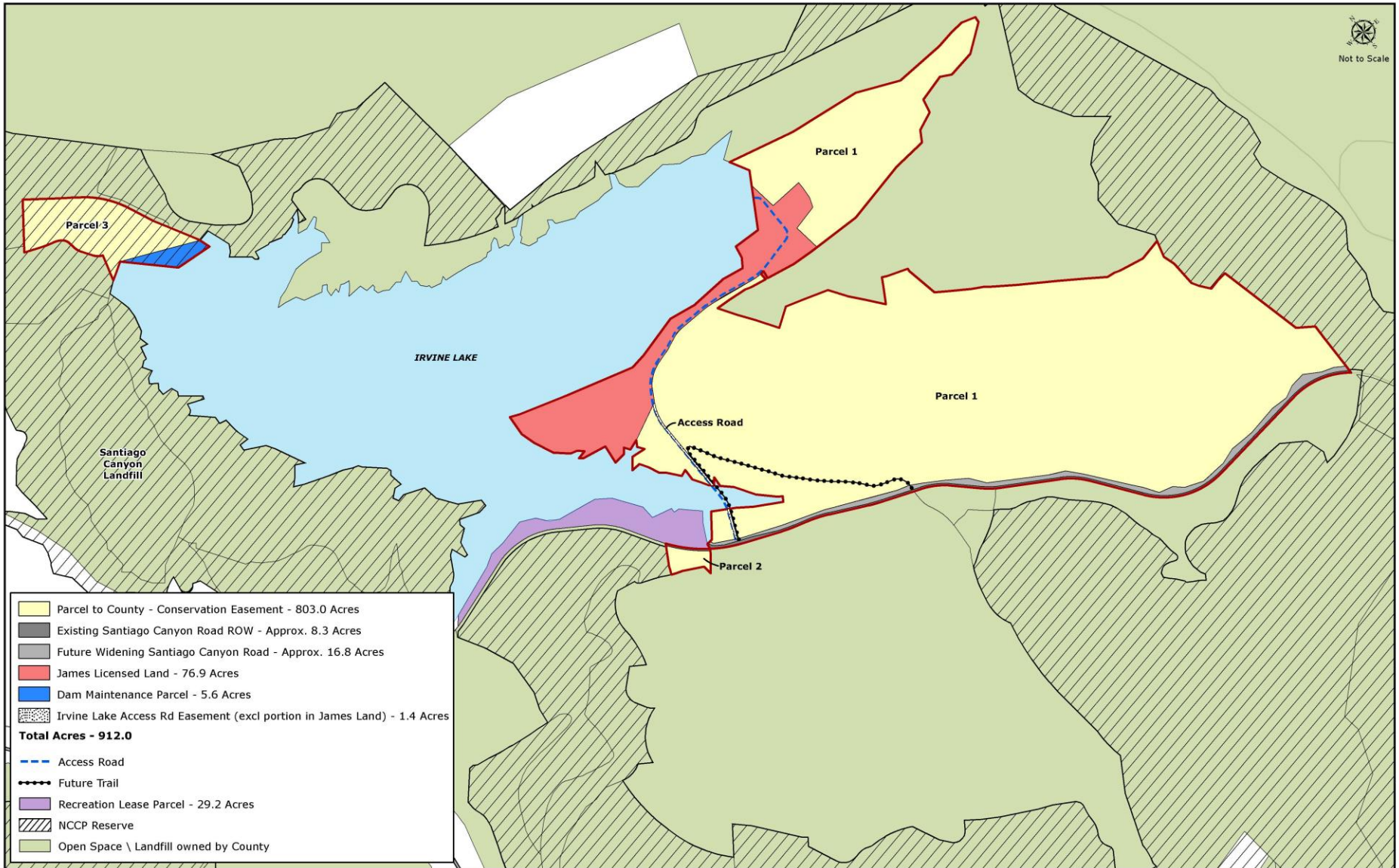


*Possible East Orange II Staging Area*

2014 IRVINE RANCH LAND DONATION



# East Orange II



Not to Scale

*Irvine Lake/James License Area*



2014 IRVINE RANCH LAND DONATION



# Conservation Easements

- Similar to TNC, OCPF would serve as “Grantee”
- Require County to preserve “Conservation Values” of land
  - Approval process
  - Remedies for Violation
- County required to develop RRMP within 3 years
- County required to annually report on activities
- Schedule 3 – Rights of Grantee
- Schedule 4 – Permitted Uses
- Schedule 5 – Inconsistent Uses

# Recommended Action

- Staff requests that the OC Parks Commission support the recommended Board actions outlined on page 6 of the staff report, to provide approval of:
  - Donation, Conveyance, and Implementation Agreement
  - Irrevocable Offer of Dedication
  - Grant Deed from RRM
  - Minor modifications to transaction documents prior to recordation
  - *(NEW) Execution of conveyance documents and deed restrictions for park purposes*