



of Laguna Beach

Marine Protec



Orange County Coastal Coalition



Thursday
March 26th, 2009



of Laguna Beach

Marine Protec

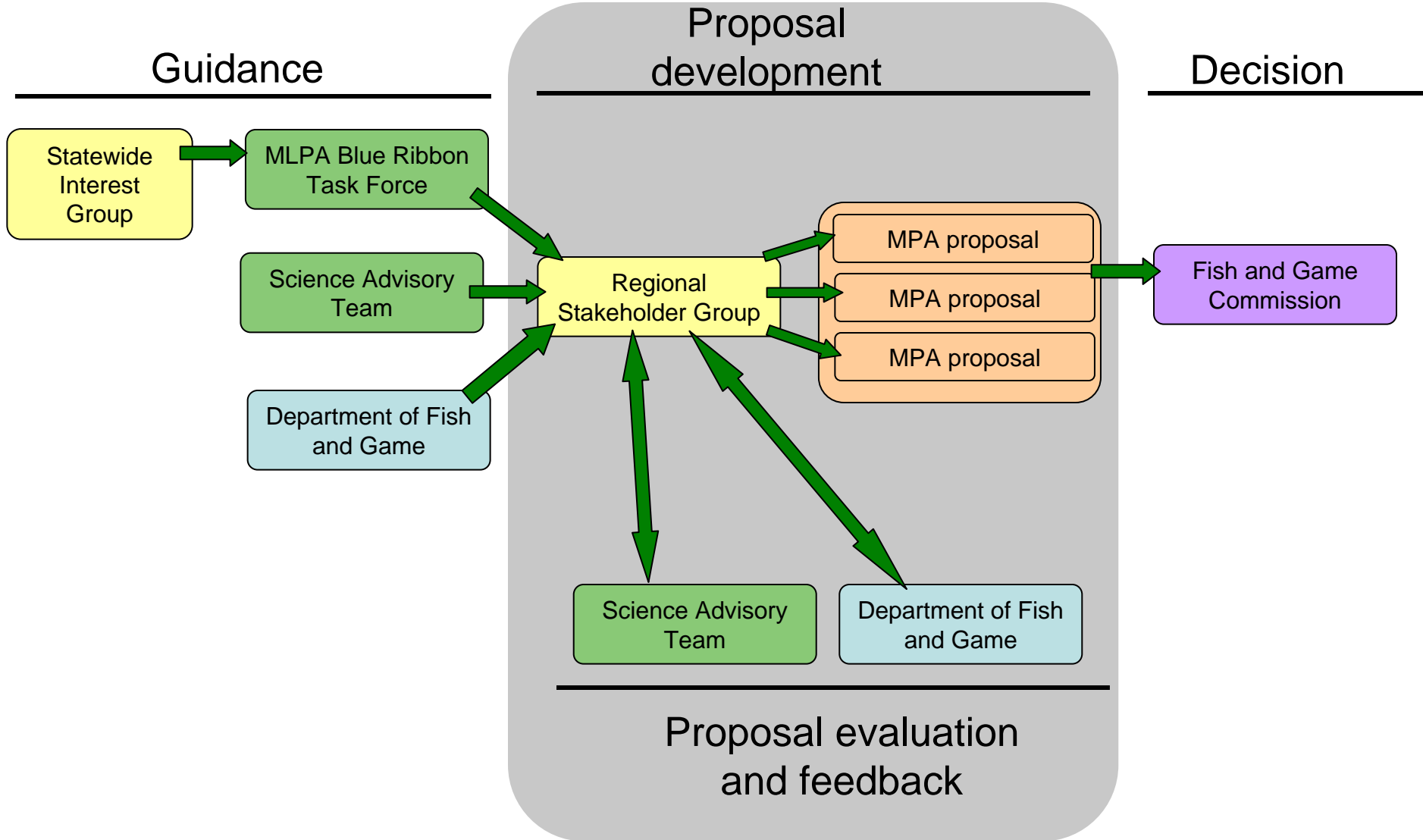


Marine Life Protection Act South Coast Study Region

Round 1 Completed

***Draft Arrays for
Orange County***







Science Guidelines

- Habitat replication. 3-5 for each region.
- Maximum spacing between habitats/MPAs is 31-62 miles.
- MPAs should extend from intertidal to offshore areas, preferably to 3 miles (state waters).
- Minimum alongshore span is 3-6 miles, preferred alongshore span is 6-12.5 miles
- Overall minimum area is 9-18 square miles, 18-36 miles preferred.
- Bird and mammal colonies/rookeries should be considered.
- Water quality is secondary criteria after all other guidelines have been incorporated— avoid areas of poor or threatened water quality.
- Contiguous MPAs with different allowed uses are clustered together based on level of protection



Feasibility Guidelines

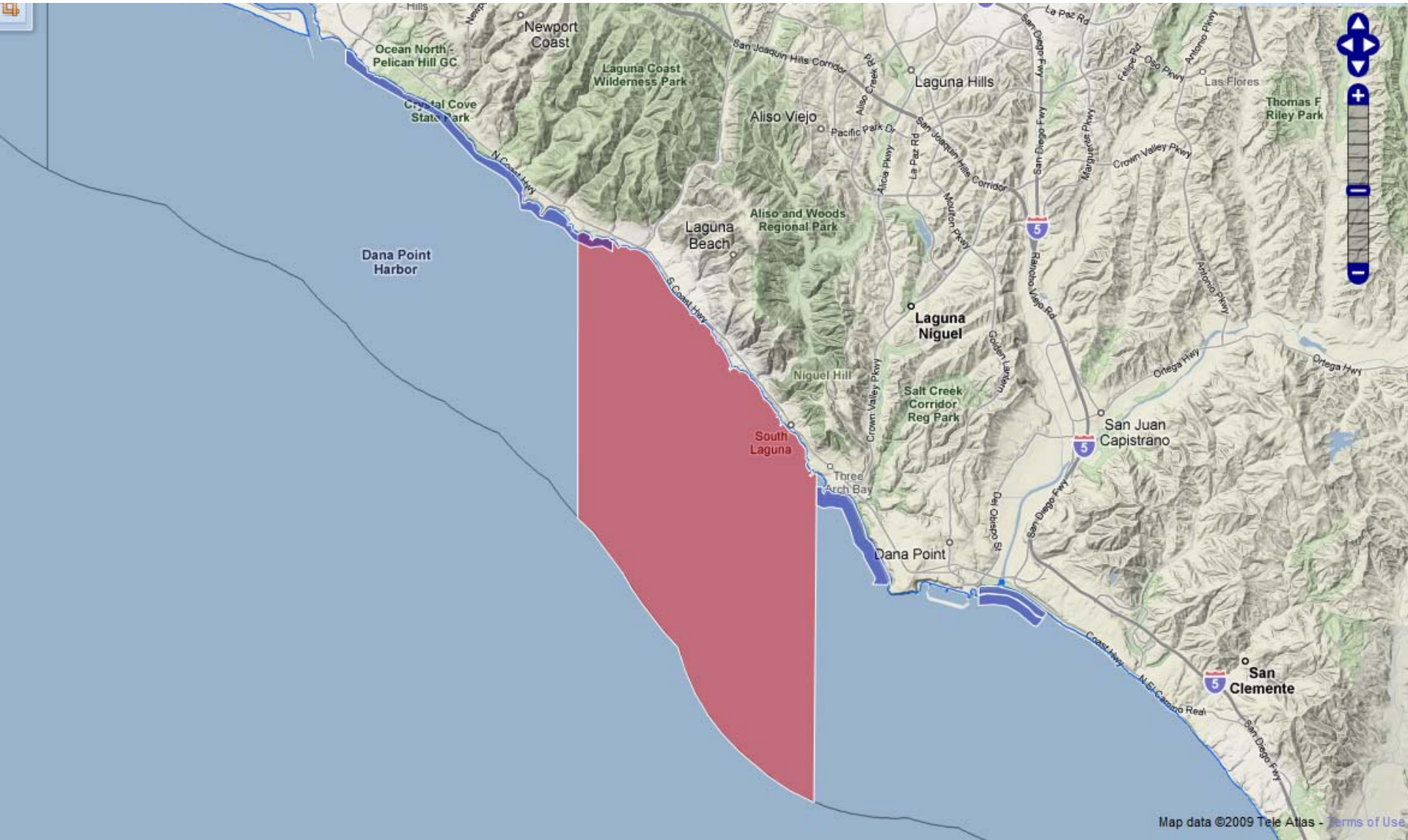
- Use straight lines, due north/south, east/west
- Use easily recognizable landmarks or major lines of lat/long
- Use simple regulations
- Consider accessibility
- Avoid complex arrangements of SMRs, SMCAs, SMPs
- Avoid depth contour and distance from shore boundaries
- Avoid intertidal MPAs that do not have an offshore component



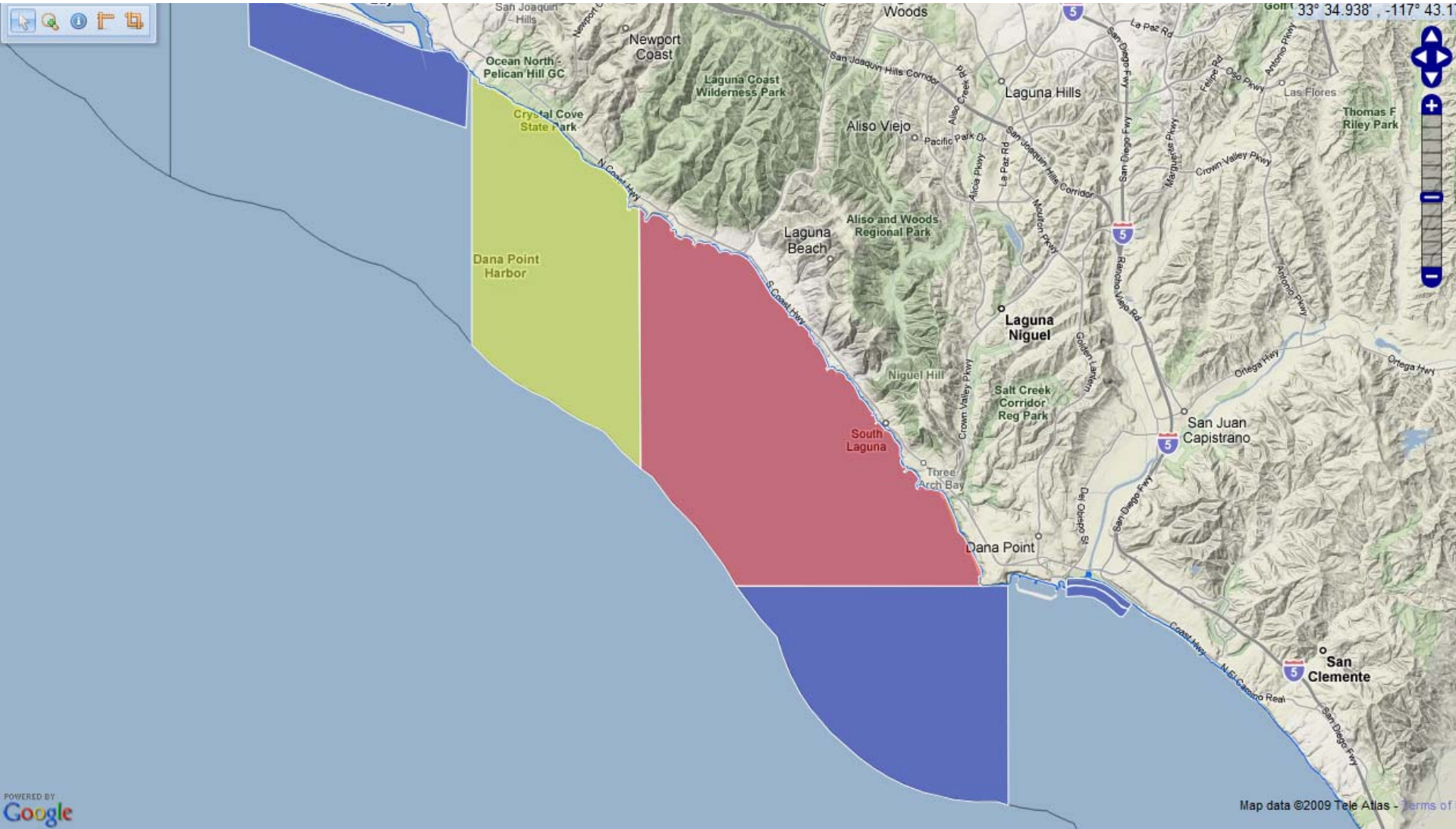
Policy Guidelines

- Take into account existing MPAs – maintain, modify or delete.
- Weight will be placed on Science Team evaluations
- Reserves should be “backbone” of network
- RSG should forward no more than 3 proposals
- Should follow DFG feasibility guidelines
- Use special closures sparingly

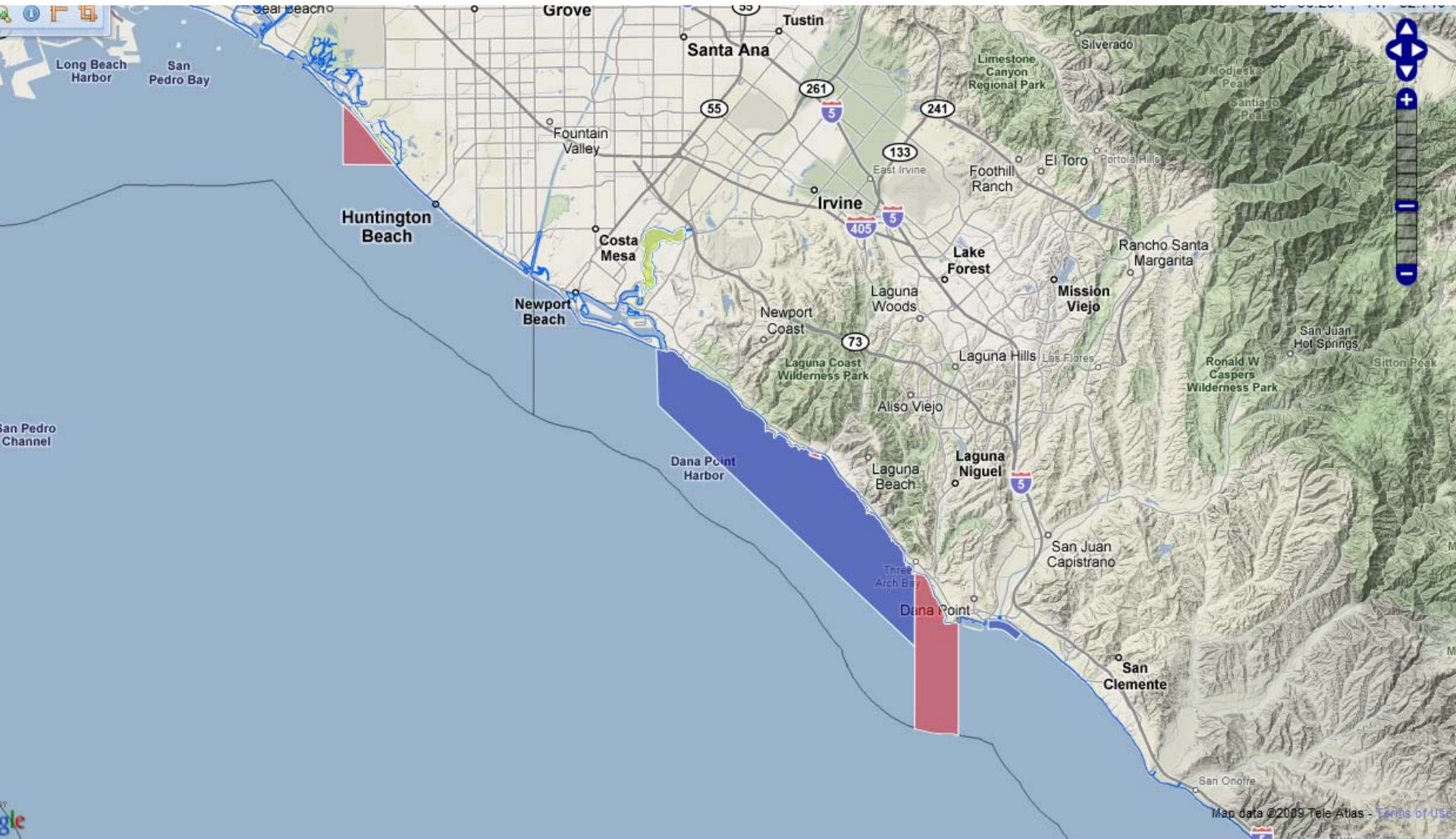
Lapis Array A



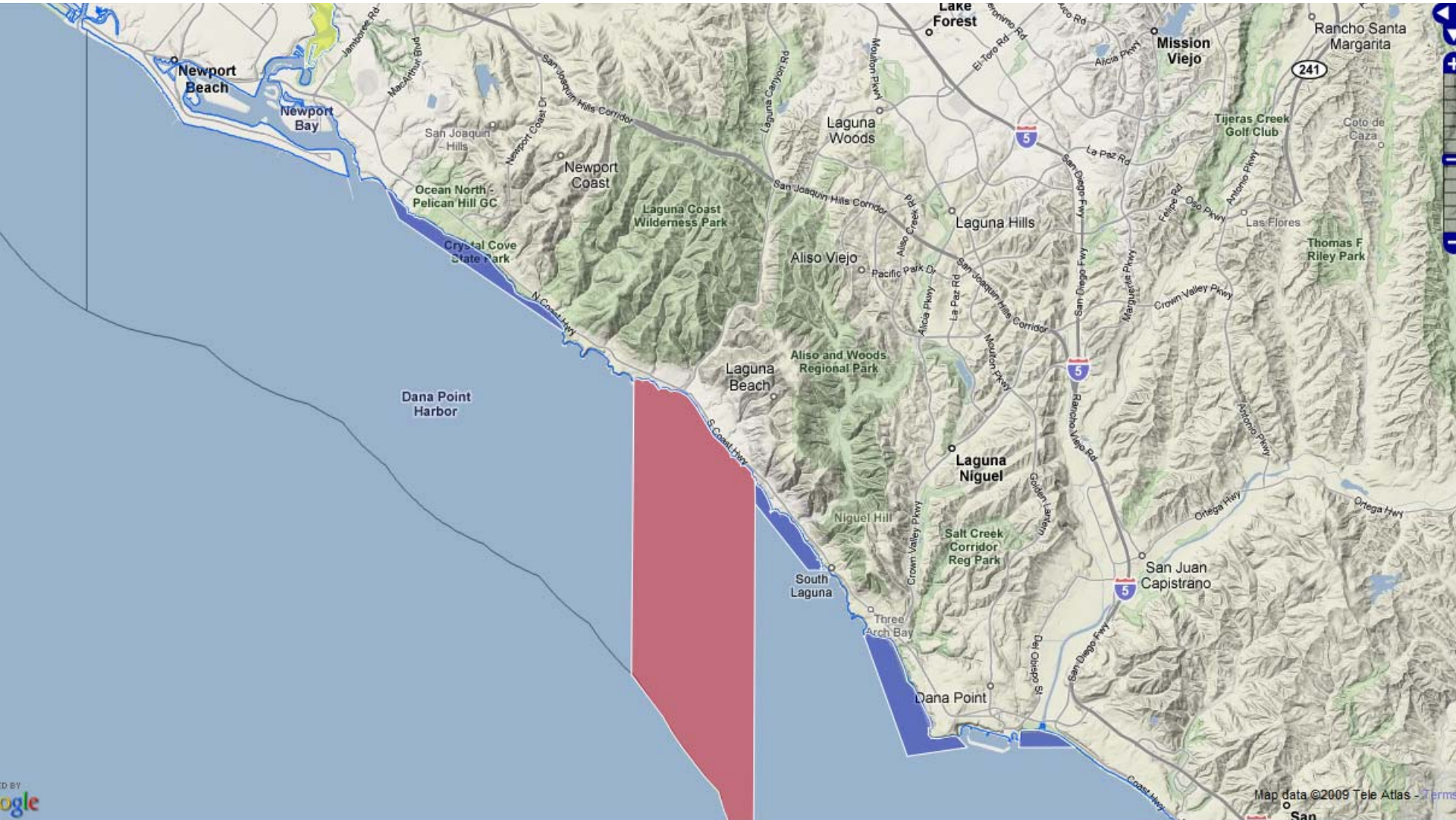
Lapis Array B



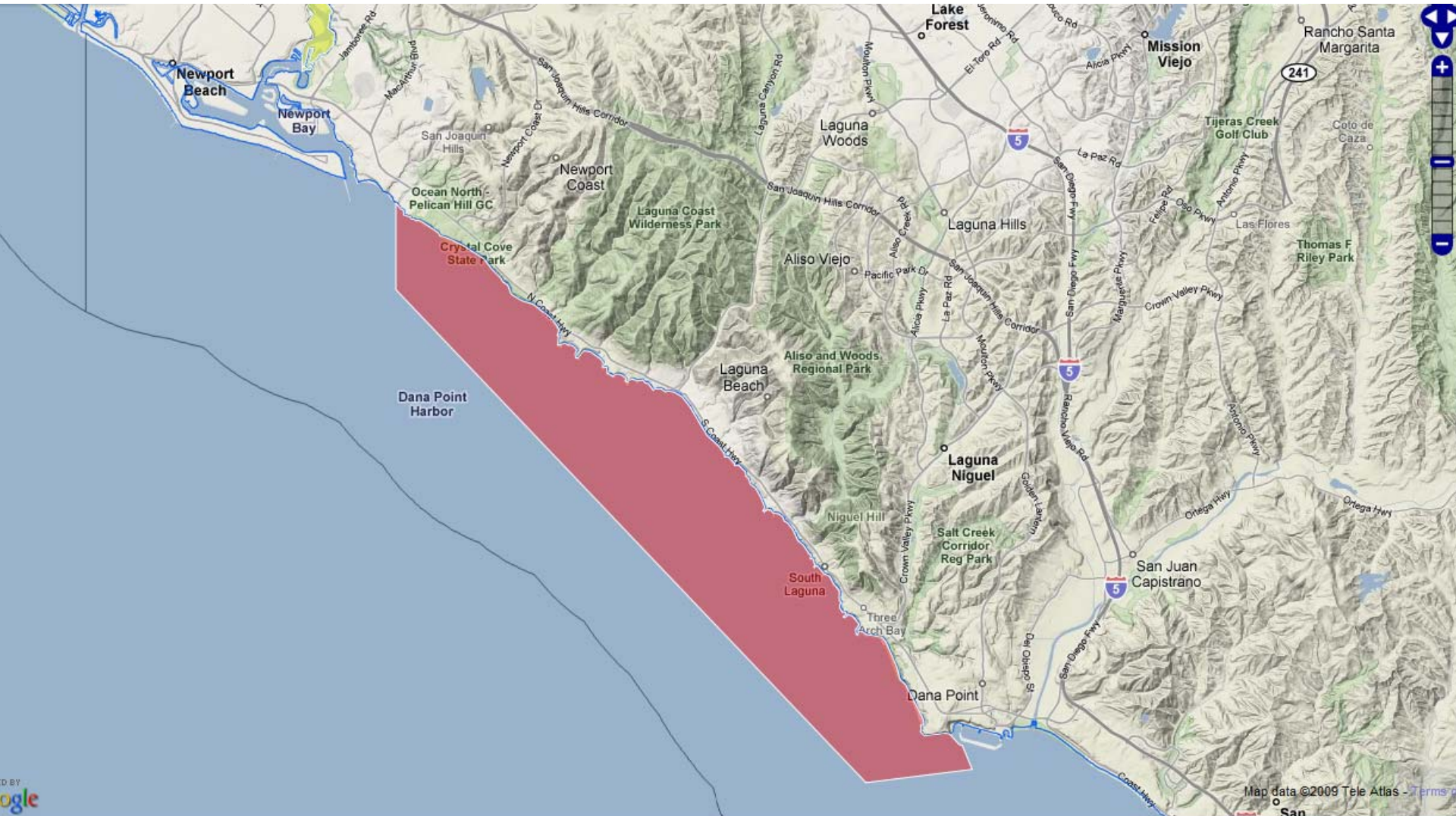
Opal Array A



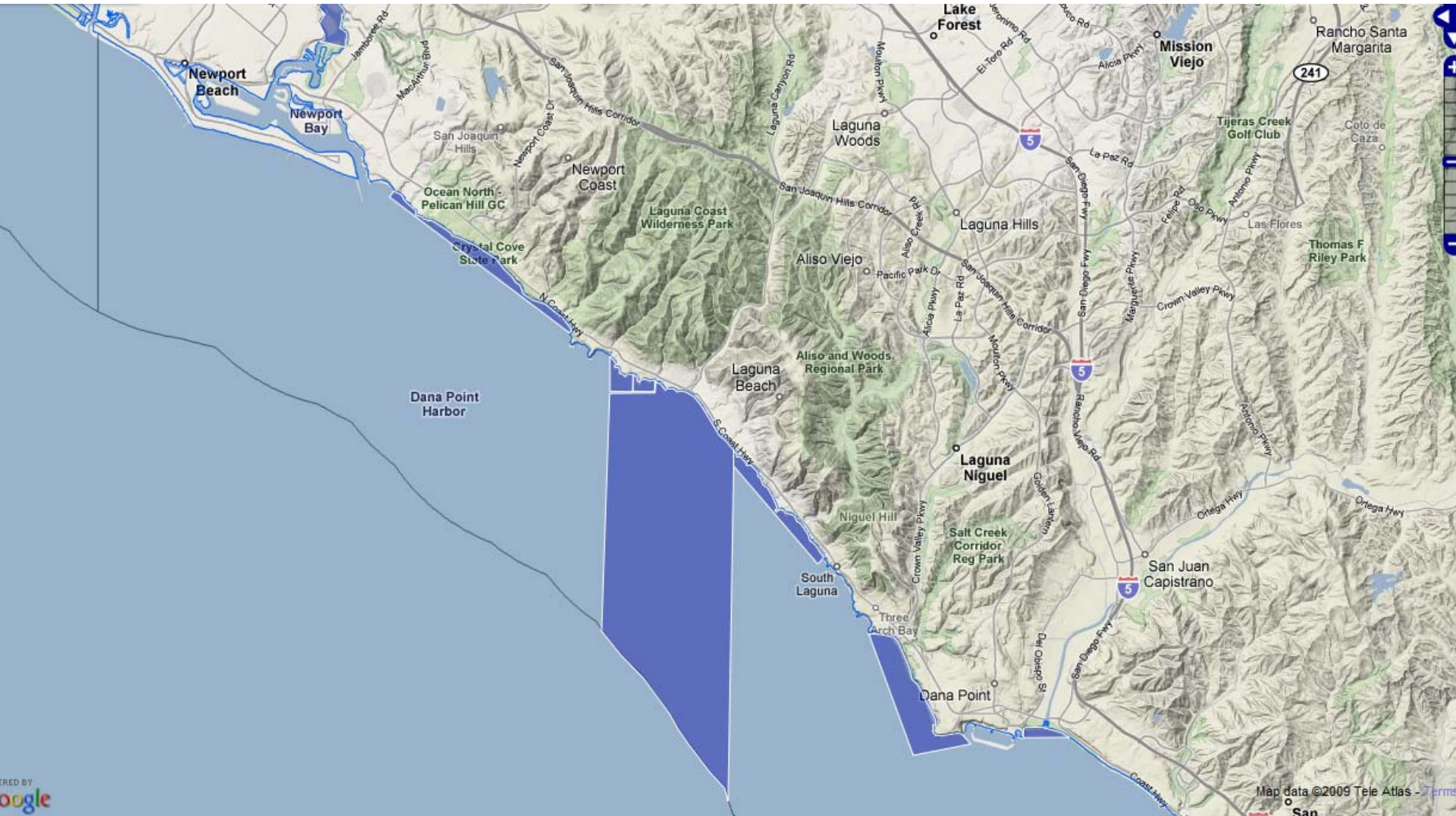
Opal Array B



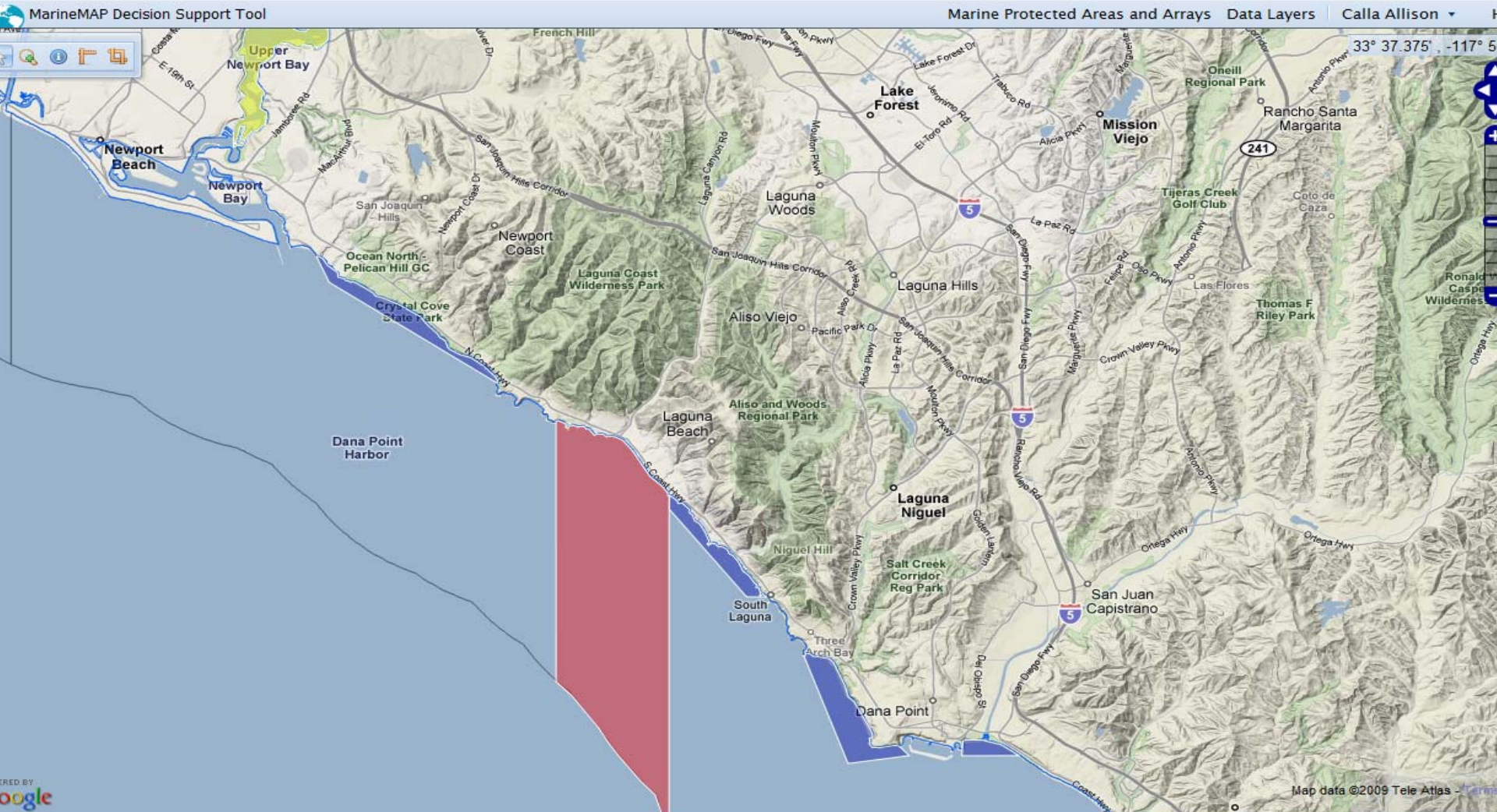
Topaz Array A



Topaz Array B



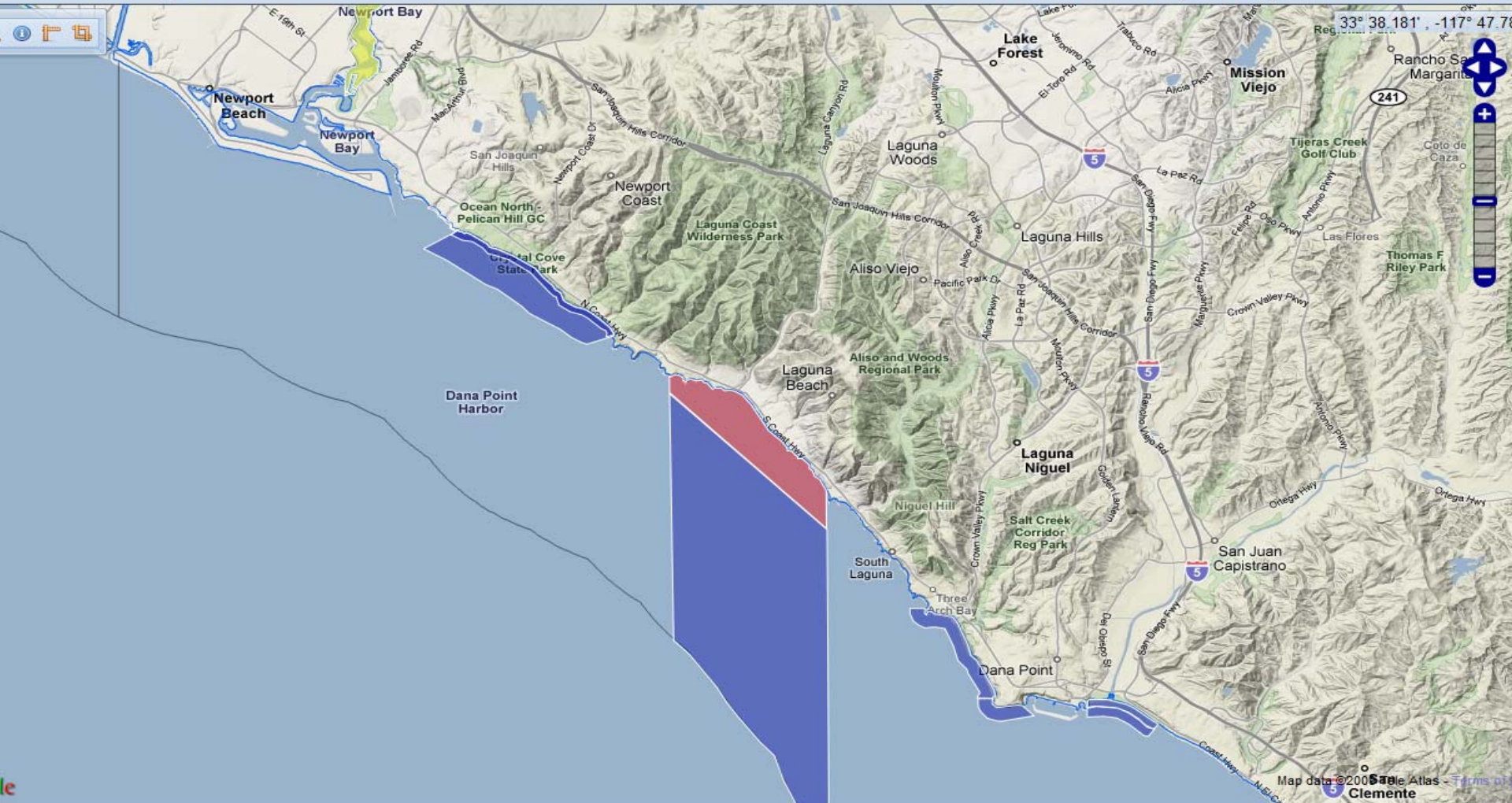
Draft External Proposal A FIC/FIN



Draft External Proposal B United Anglers

MarineMAP Decision Support Tool

Marine Protected Areas and Arrays Data Layers Calla Allison Help



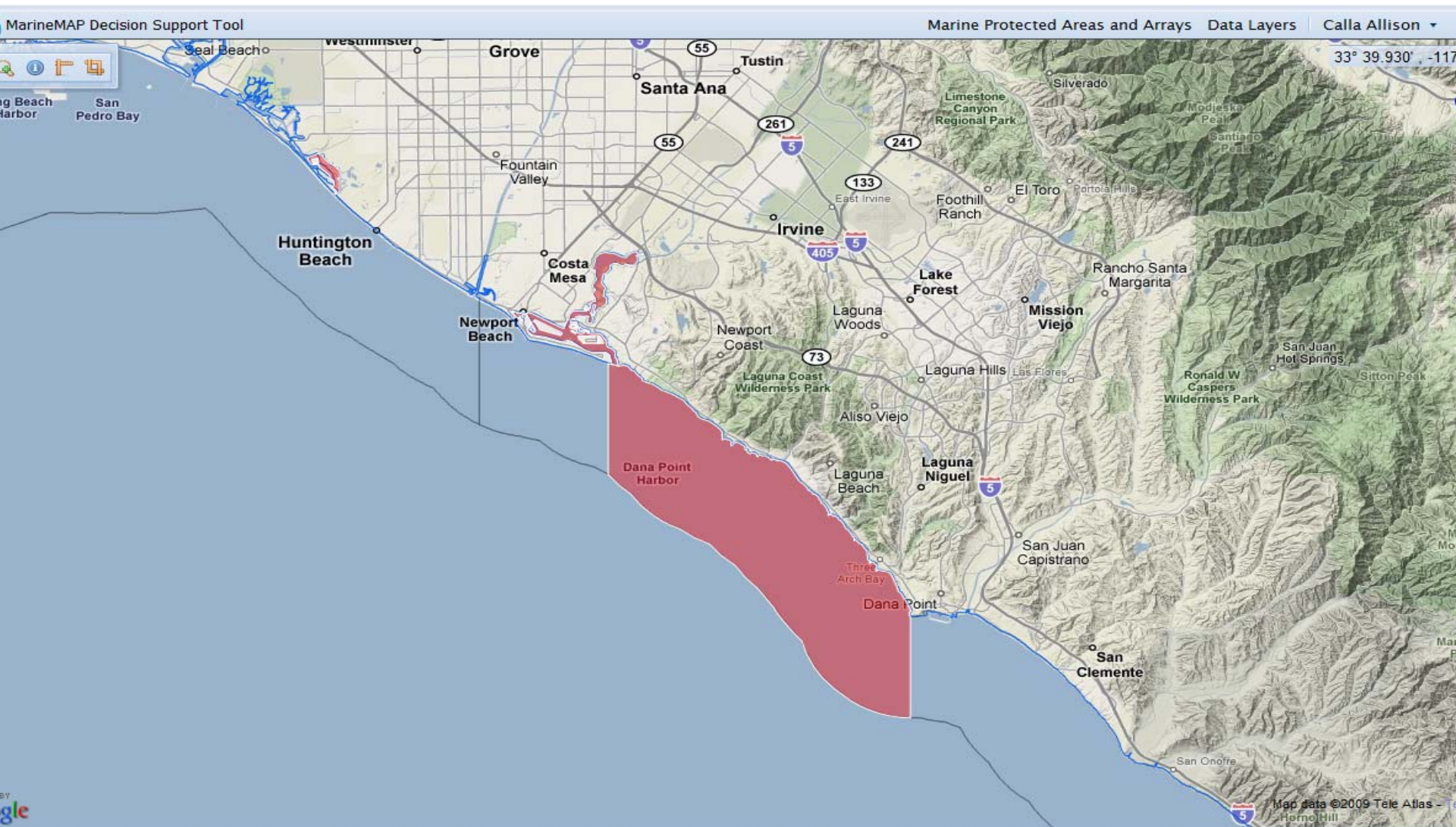
le

reports

Map data © 2005 Satellite Atlas - Terms of Use
Clemente

Draft External Proposal C

Santa Barbara Channelkeeper/Santa Monica Baykeeper





Upcoming Meetings

Science Advisory Team

April 1 and April 6, 2009

April 1: 9:30 a.m. – 5:30 p.m.

Embassy Suites LAX North

9801 Airport Blvd

Los Angeles, CA 90045

April 6: Conference call

Blue Ribbon Task Force

April 15-16, 2009

April 15: 9:30 a.m. – 5:30 p.m.

April 16: 8:30 a.m. – 4:00 p.m.

Laguna Cliffs Marriott

25135 Park Lantern, Dana Point

Regional Stakeholder Group

April 28-29, 2009

Residence Inn by Marriott

2101 West Vineyard Ave.

Oxnard, CA 93036



Questions?



Contact Information

- **Email:** MLPAComments@resources.ca.gov
- **Website:** www.dfg.ca.gov/mlpa/
- **Fax:** 916-653-8102 Attn: MLPA Initiative
- **Phone:** 916-654-1885
- **Mail:** MLPA Initiative
c/o California Resources Agency
1416 Ninth Street, Suite 1311
Sacramento, CA 95814