



# Marine Life Protection Act



## Marine Life Protection Act

### Process Overview

January 2008

Marine Region

California Department of Fish and Game



# Marine Life Protection Act (MLPA)

- Signed into California State Law in 1999
- Mandated to revise MPAs in State waters of California (out to three miles) and manage to the extent possible as a network
- Planning, implementation and monitoring of MPA network to be carried out by the California Department of Fish and Game (CDFG)





# Six Goals of MLPA

1. **To protect the natural diversity and abundance of marine life**, and the structure, function and integrity of marine ecosystems
2. **To help sustain, conserve, and protect marine life populations**, including those of economic value, and rebuild those that are depleted
3. **To improve recreational, educational and study opportunities** provided by marine ecosystems that are subject to minimal human disturbance, and to manage these uses in a manner consistent with protecting biodiversity
4. **To protect marine natural heritage**, including protection of representative and unique marine life habitats in California waters for their intrinsic value
5. **To ensure that California's MPAs have clearly defined objectives**, effective management measures, and adequate enforcement, and are based on sound scientific guidelines
6. **To ensure that the state's MPAs are designed and managed, to the extent possible, as a network**



# Marine Life Protection Act

## Act requirements:

- Master Plan for MPAs
- Use of “best readily available science”
- A “master plan team”
- Involvement of stakeholders, other interested parties
- Adoption of a Marine Life Protection Program by the California Fish and Game Commission

# MLPA Study Regions



- 2 previous attempts at implementation along entire coast of California simultaneously
- Currently in 3<sup>rd</sup>
- Now: California divided in 5 study regions
- Implemented the Central Coast in September 2007
- Planning process is under way in North Central Coast
- DFG does not “draw” MPAs, but provides support to the various MLPA groups who do
- MLPA is an open and transparent public process



# Initiative Key Design Components

- **Leadership** – Governor Arnold Schwarzenegger, California Resources Agency, and California Department of Fish and Game (DFG)
- **Public-Private Partnership** – Resources Legacy Fund Foundation arranges private funds (\$7.2 million over 2.5 years in first phase) through memorandum of understanding
- **Policy Advice** – Blue Ribbon Task Force, not political appointees and independent, with own staff
- **Stakeholder Input** – Statewide Interests Group, regional stakeholder group for each study region, public input at meetings and on documents
- **Scientific Advice** – Science Advisory Team with expertise in marine ecology, fisheries, marine protected areas, economics and social sciences



## Key MPA Planning Tasks of Stakeholder Group

- Evaluate existing state MPAs relative to the Act
  - Identify if any existing state MPAs need to be eliminated, modified, or added to
- If existing state MPAs do not meet requirements of the Act, develop alternative proposals for arrays of MPAs for the study region



# The “Players”

- MLPA Institutional Partners
- MLPA Initiative Groups and Contractors
- Stakeholders
- General Public







# MLPA Initiative Groups

- Blue Ribbon Task Force (BRTF)
- Statewide Interests Group (SIG)
- Regional Stakeholder Group (RSG)
- Science Advisory Team (SAT)
- Contractors



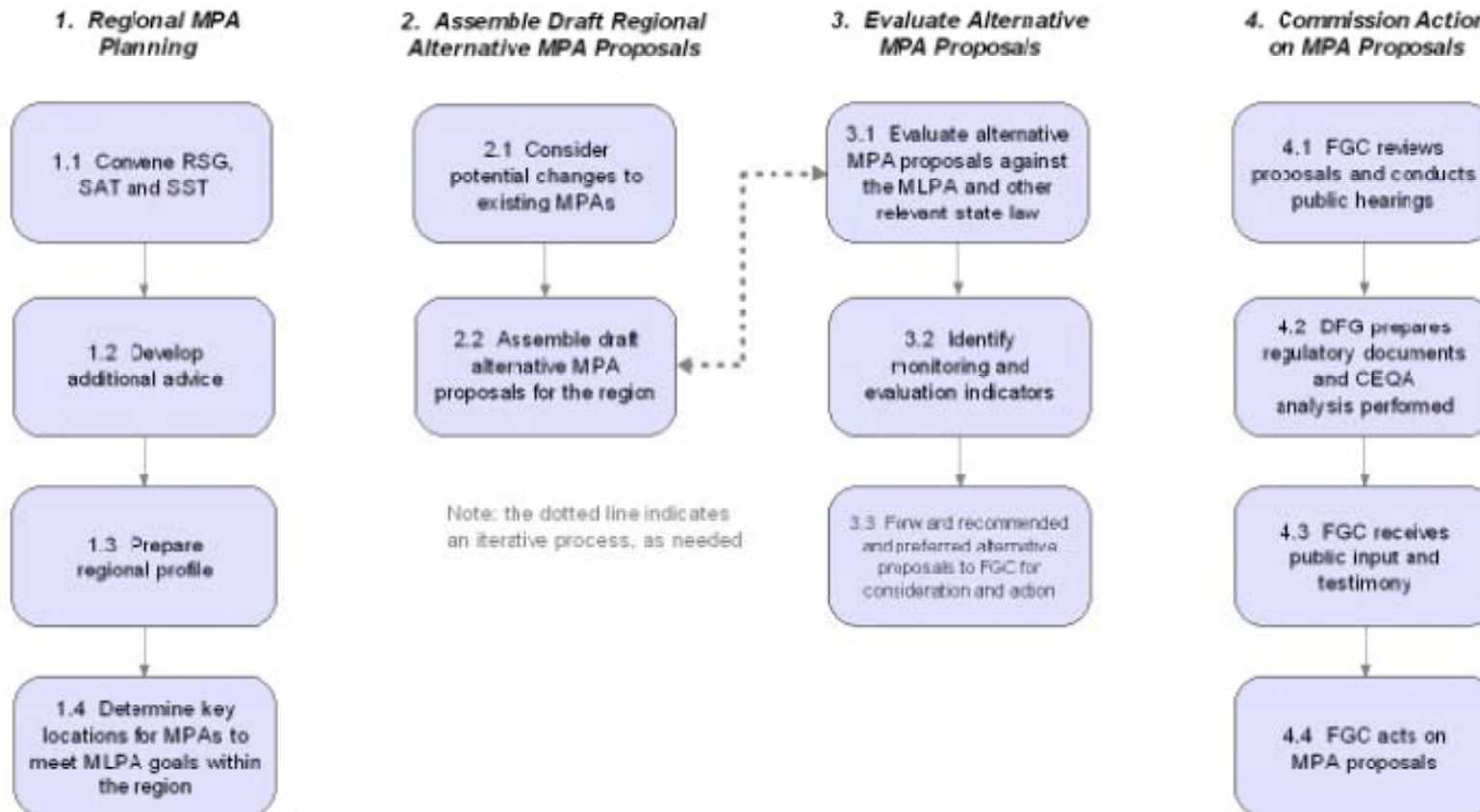


# Stakeholders including

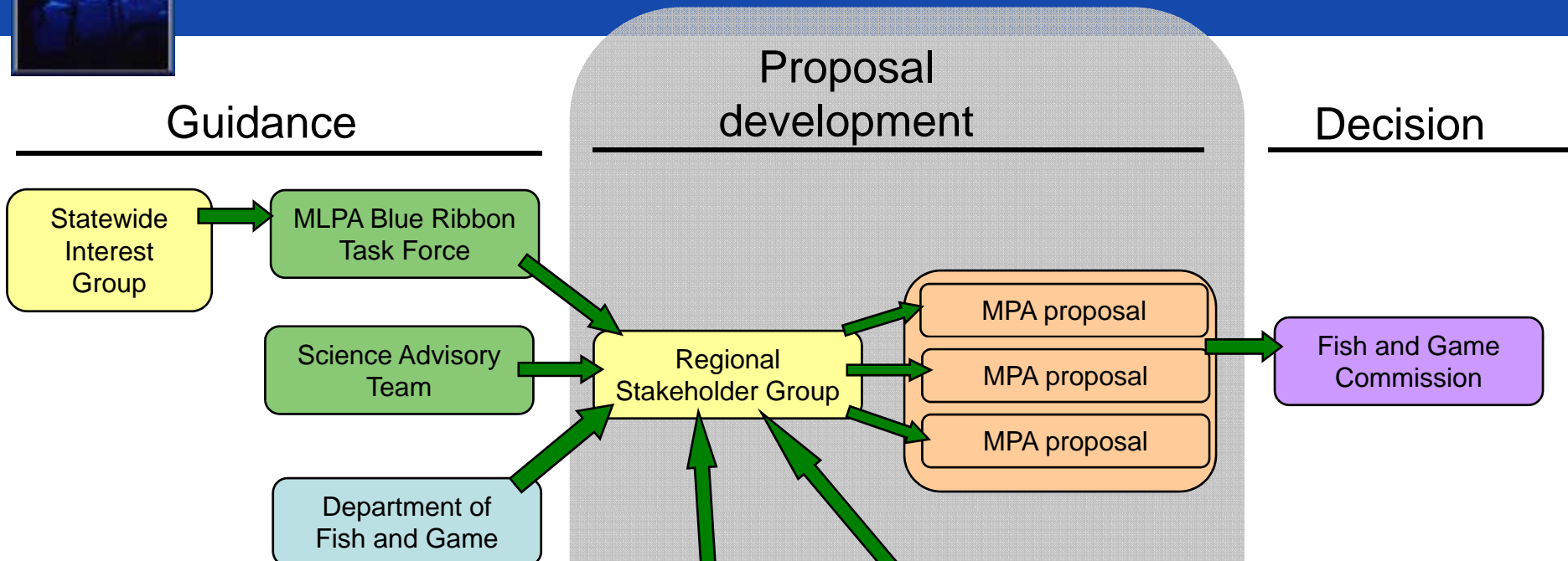
- Ocean industries, including commercial fishing
- Ocean recreation
- Conservation groups
- Educational and research institutions
- Government agencies
- General public



# MLPA Planning Process Stages



# MPA regional planning structure



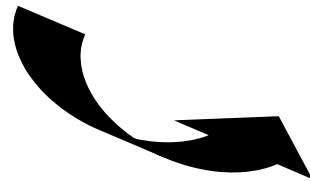
- The regional stakeholder group creates proposals for a regional network of MPAs and MRAs
- The Fish and Game Commission adopts a single proposal for a regional network of MPAs and MRAs
- Oversight of stakeholders in design process results in greater public acceptance
- Following adoption the California Department of Fish and Game is responsible for implementation and feedback



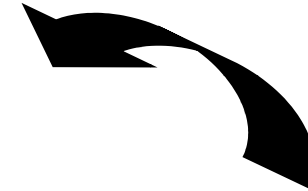
# Creation of MPA Proposals

Iterative Process:

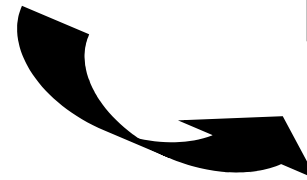
Development



Evaluation



Refinement



It is anticipated that there will be multiple versions of several alternative proposals



# SMR, SMP, SMCA...What Does it All Mean?

- **SMR**- State Marine Reserve
- **SMP**- State Marine Park
- **SMCA**- State Marine Conservation Area





# State Marine Reserve (SMR)

- **State Marine Reserve-**  
Prohibits all extractive activities.

*Central Coast Study Region*  
*ex: Big Creek SMR- No take*





# State Marine Park (SMP)

- **State Marine Park-** Prohibits all commercial extractive activities and potentially some recreational activities.



*Central Coast Study Region ex:  
Elkhorn Slough (SMCA/SMP)-Allows  
take of recreational finfish by  
hook and line, clams in area  
adjacent to DFG wildlife area in  
northwest*





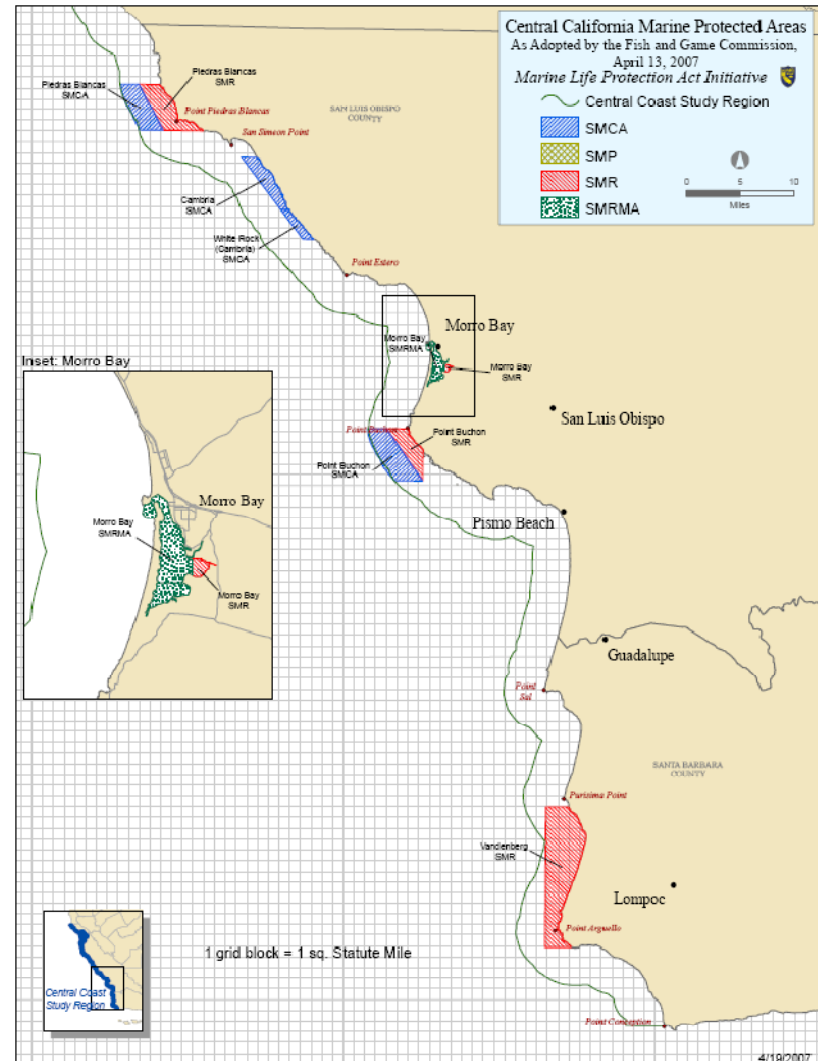
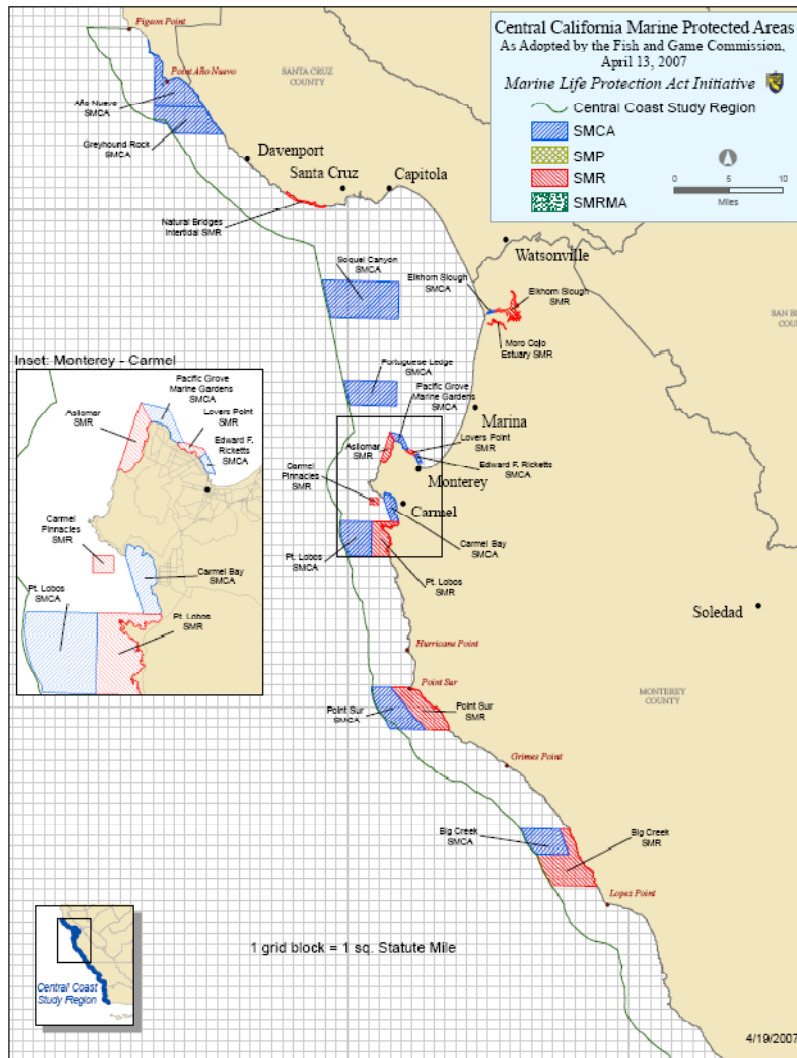
# State Marine Conservation Area (SMCA)

- **State Marine Conservation Area-** Limits recreational and/or commercial extractive activities.



*Central Coast Study Region ex:  
Greyhound Rock SMCA-  
Allows recreational take of  
finfish by hook and line from  
shore only. Allows commercial  
and recreational take of giant  
kelp by hand, salmon and  
squid in entire MPA*

# Central Coast Study Region MPAs

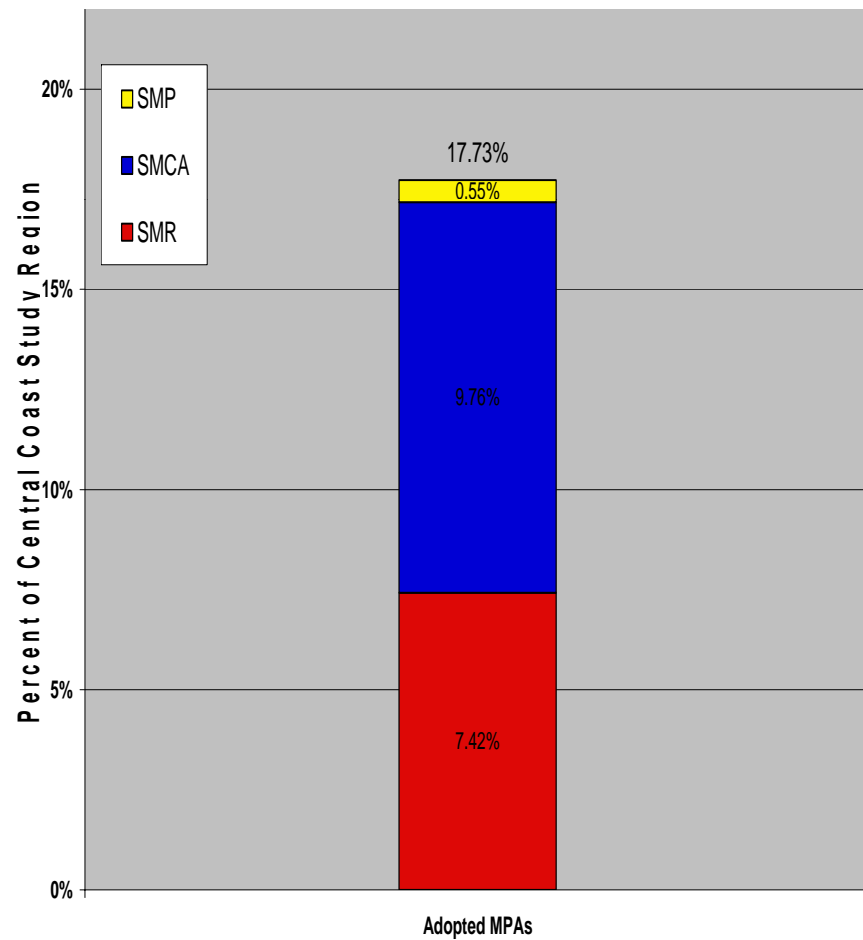


# Central Coast Study Region Adoption

- Commission Preferred Alternative
  - 29 MPAs covering 204 square miles)
  - 85 square miles of “no-take”

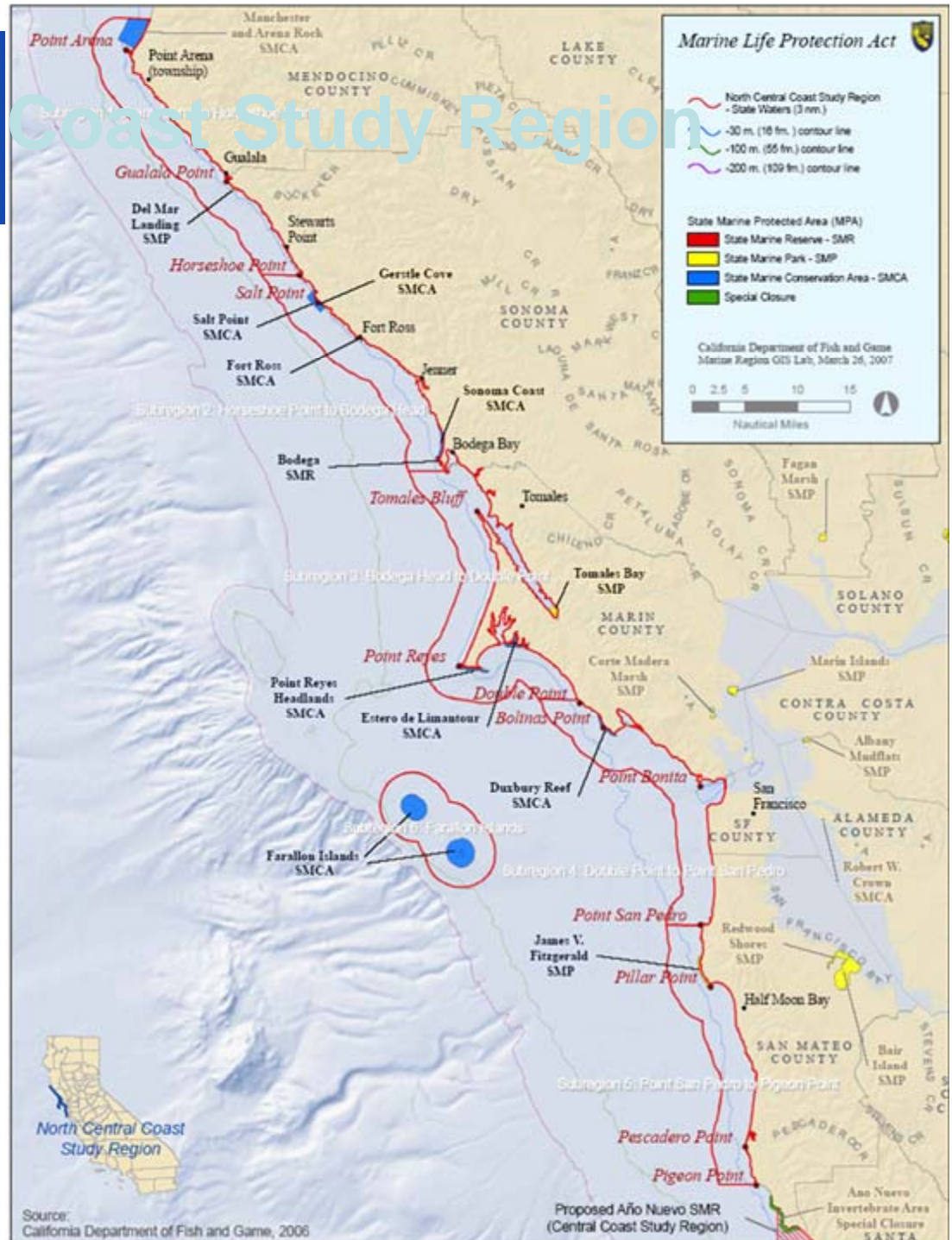
Type	Area (sq. miles)	Percent of Central Coast Waters
SMR	85.34	7.42%
SMP	6.35	0.55%
SMCA	112.19	9.76%
<b>Total</b>	<b>203.88</b>	<b>17.73%</b>

Percentage of Central Coast State Waters in MPA Packages (by type of MPA)



# North Central Coast Study Region

- North Central Coast Study Region
  - Alder Creek / Pt. Arena to Pigeon Pt.
  - Farallon Islands
  - not including SF Bay
- Area: 763 sq. mi.
- North-south extent: 146 mi.





# Future Planning of MLPA

- *Network completed around 2011*

**Central Coast Region** (Pigeon Point to Point Conception)  
COMPLETED (2007)

**North Central Coast Region** (Point Area to Pigeon Point)  
IN PROGRESS (2007-2008):

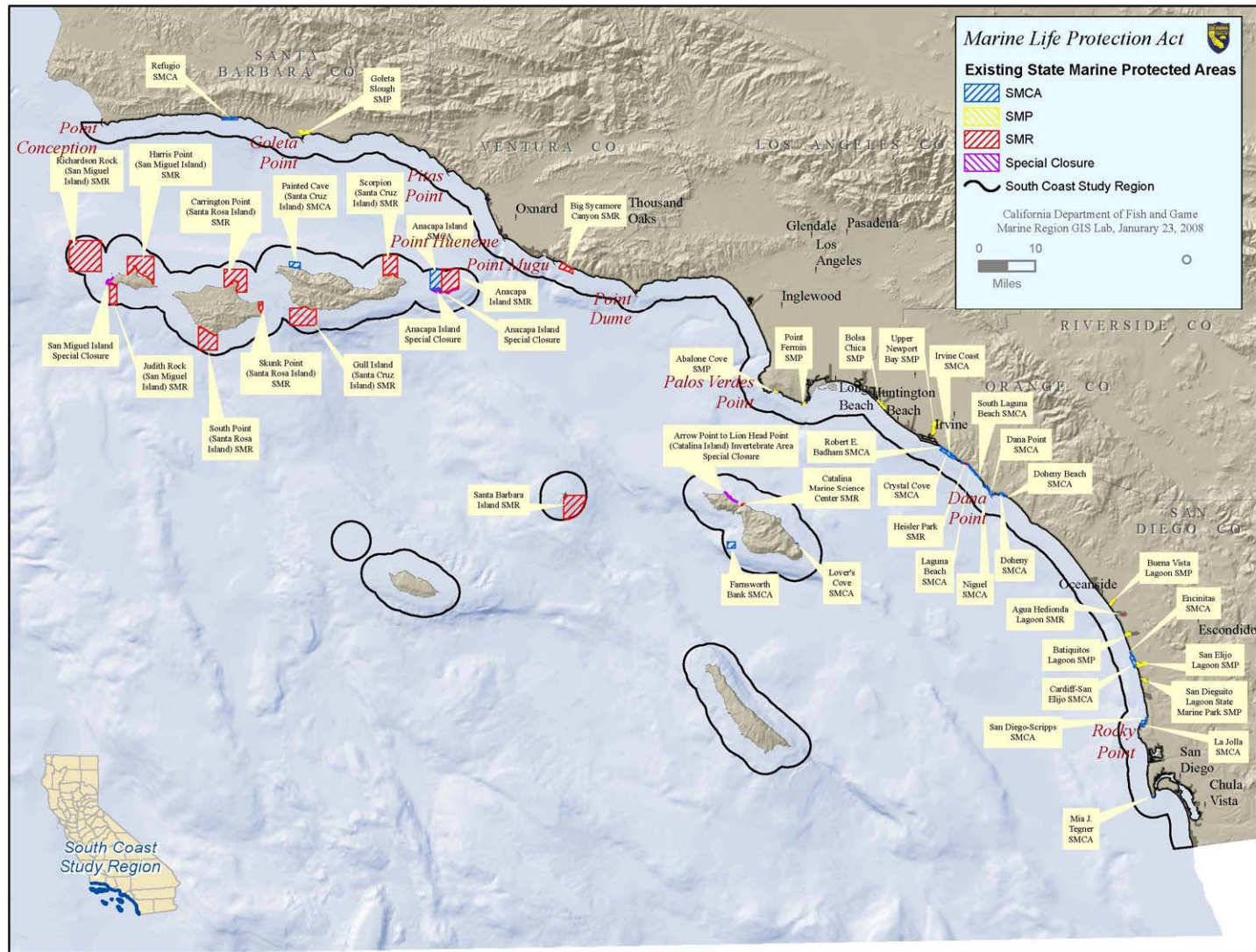
**South Coast Region** (Point Conception to US/Mexico border)  
WILL BEGIN MID-2008

**North Coast Region** (California/Oregon border to Point Arena)  
FUTURE

**San Francisco Bay**  
FUTURE

- *Ongoing adaptive management through monitoring and evaluation.*

# South Coast Study Region – Existing MPAs



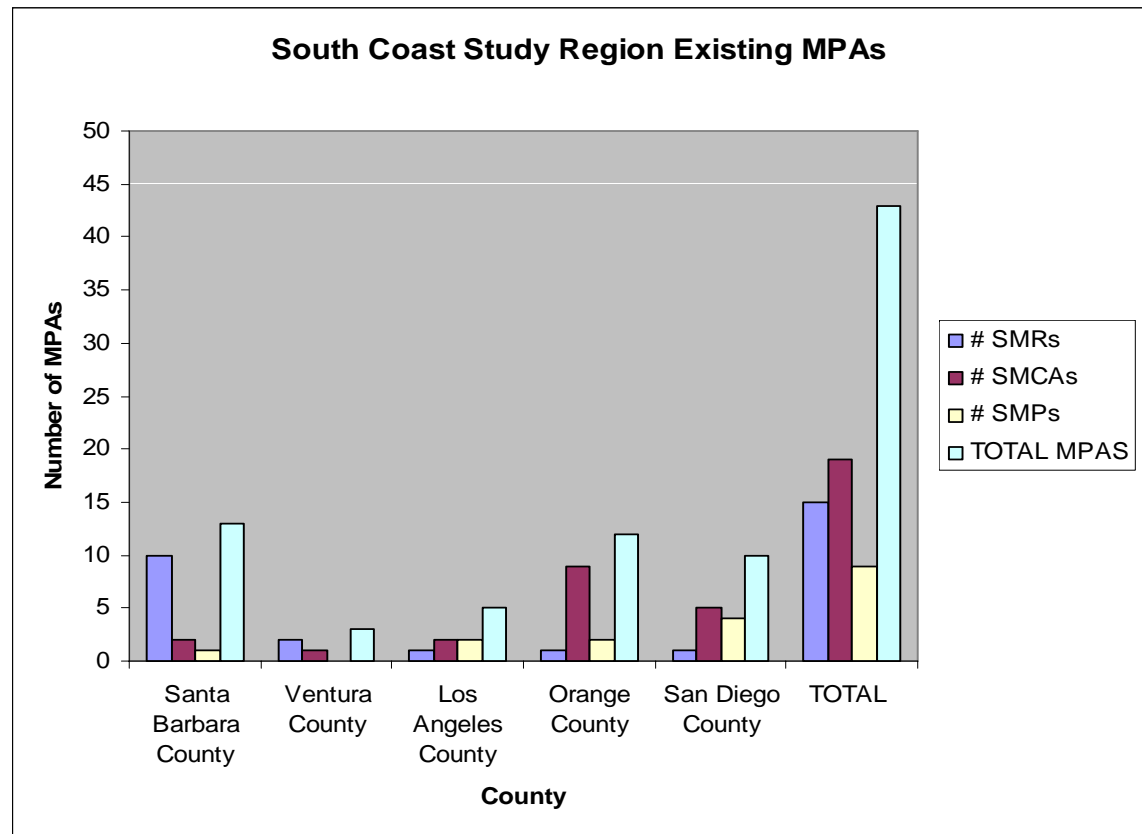
Existing State Marine Protected Areas (MPAs)

South Coast Study Region

# Existing South Coast MPAs



COUNTY	# SMRs	# SMCAs	# SMPs
Santa Barbara County	10	2	1
Ventura County	2	1	0
Los Angeles County	1	2	2
Orange County	1	9	2
San Diego County	1	5	4
<b>TOTAL</b>	<b>15</b>	<b>19</b>	<b>9</b>





# South Coast Study Region

- Upcoming first round of informative public workshops being planned
- Sub-regional approach
- Development of a regional profile
- Outreach and education





# MLPA TOP 5 Frequently Asked Questions

1. If an area is closed as an MPA will it always be closed?
2. Enforcement?
3. Why do we need MPAs in our area?
4. When will the MLPA be in our area?
5. How does the MLPA and MPA placement effect existing fisheries management measures and closures?



# Common Misconceptions

*“The great enemy of the truth is very often not the lie—deliberate, contrived and dishonest—but the myth—persistent, persuasive and realistic.” JFK*

- There is a minimum area in each study region that needs to be set aside as MPAs.
- SAT “draws lines” for MPA proposals.
- RLFF has say over final adoption of packages.
- There is no scientific data that MPAs work.



# Get Involved

- Go to public meetings.
- Watch/listen to current and archived meetings on the web.
- Send comments.
- Add yourself to the mailing list.
- Comment on draft public documents.
- Visit the web: [www.dfg.ca.gov/mlpa](http://www.dfg.ca.gov/mlpa)



# MLPA-Initiative Contact Information

- **Fax:** 916-653-8102 Attn: MLPA Initiative
- **Mail:** MLPA Initiative  
c/o California Resources Agency  
1416 Ninth Street, Suite 1311  
Sacramento, CA 95814
- **E-mail:**  
[MLPAComments@resources.ca.gov](mailto:MLPAComments@resources.ca.gov)
- <http://www.dfg.ca.gov/mlpa/contact.html>

