

Orange County Coastal Coalition

August 28, 2008

Project Update **U.S. Army Corps of Engineers** **Shoreline Erosion Feasibility Study**



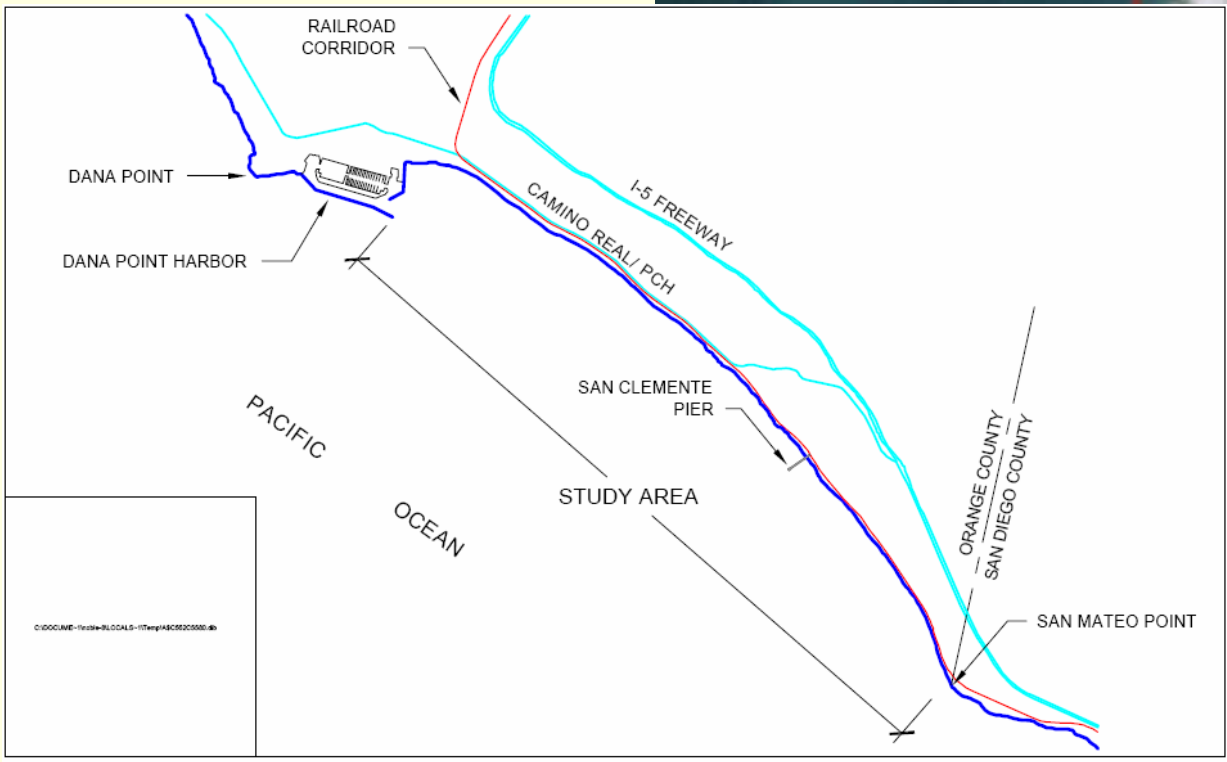
Tom Bonigut, P.E.
Environmental Programs Manager
City of San Clemente

Purpose

- Address beach erosion
- Determine Federal interest

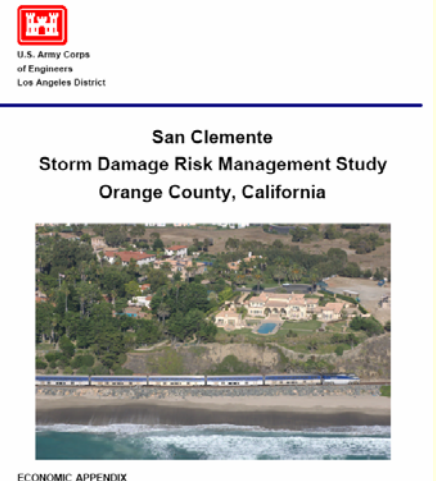


Study Area

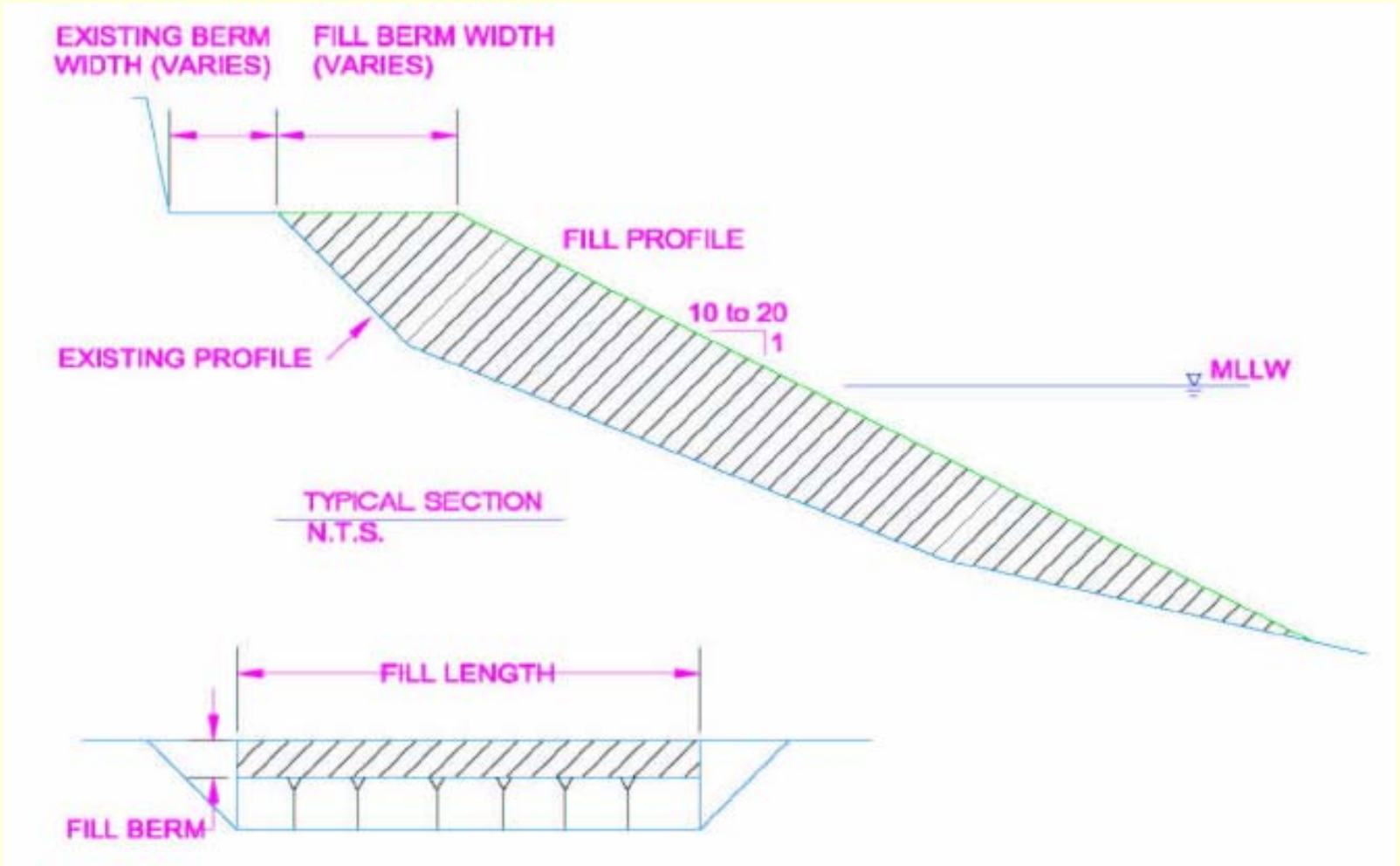


Feasibility Study Analyses

- Coastal
- Economic
- Environmental (EIS / EIR)
- Geotechnical
- Cost Engineering
- Real Estate

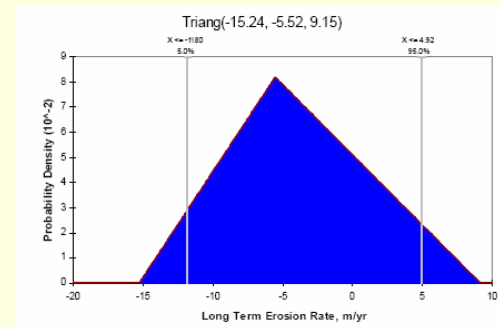


Alternatives



Beach Nourishment Evaluation

- 7 Alternatives
 - Widths from 10 – 40 meters
- Numerical modeling
 - Storm damage
 - Risk & uncertainty



Alternative Review Conference

- Purpose
 - Screen final alternatives & evaluation process
- Corps and City attendees
- Results:
 - There is a feasible sand replenishment project
 - No major issues – study to move forward

Recommended Alternative

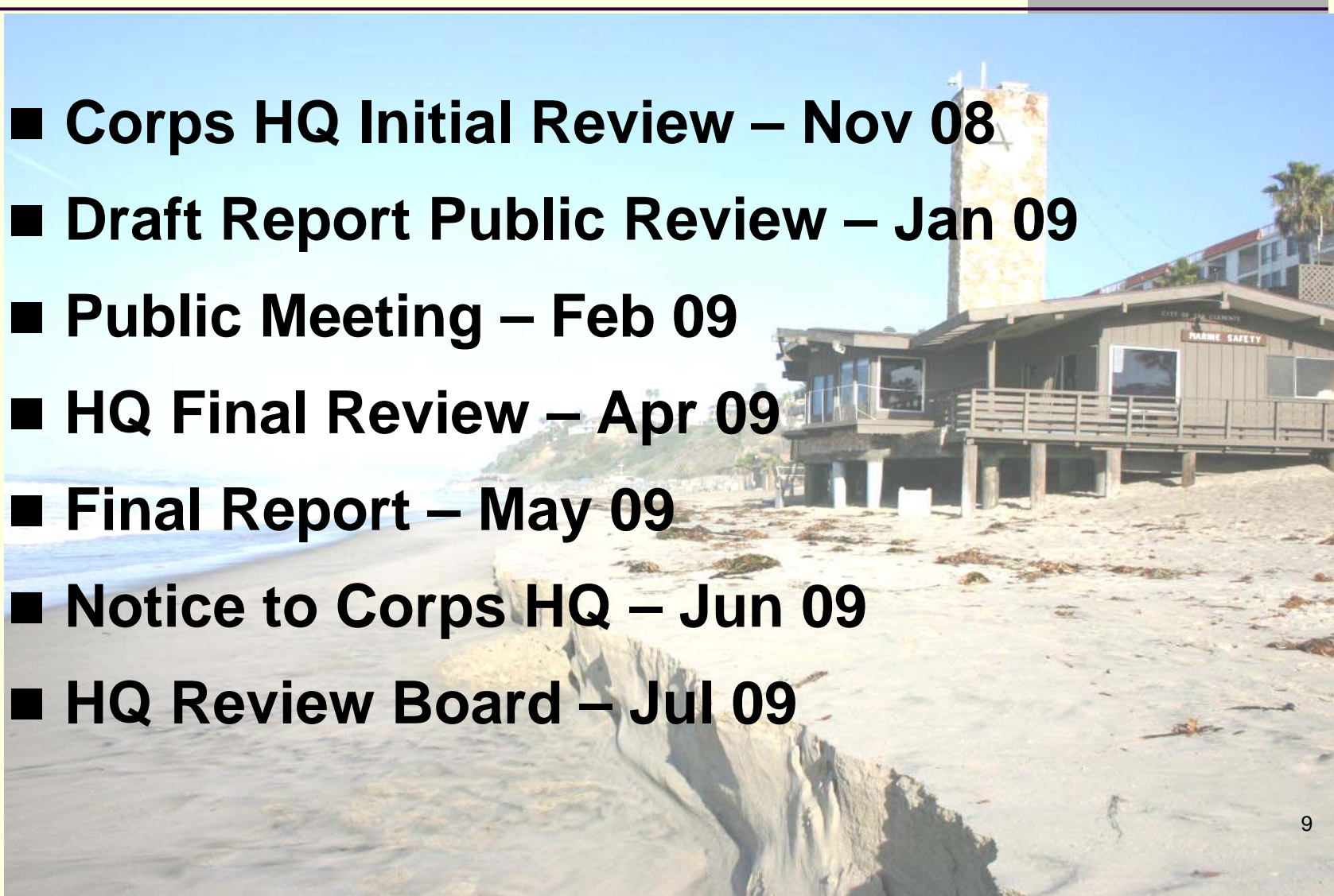
(subject to final revision)

- **Sand Replenishment**
 - Initial plus periodic additional sand fill
 - Up to 100-foot wide sand fill
- **Costs *(estimated)***
 - Design – \$1.5M
 - Initial Construction – \$7.7M
 - Ongoing Construction – \$13.2M



Tentative Schedule

- Corps HQ Initial Review – Nov 08
- Draft Report Public Review – Jan 09
- Public Meeting – Feb 09
- HQ Final Review – Apr 09
- Final Report – May 09
- Notice to Corps HQ – Jun 09
- HQ Review Board – Jul 09



Orange County Coastal Coalition

August 28, 2008

Questions?

