



25300 Dana Point Harbor Drive, Dana Point, CA 92629 (949) 496-6172

## DOHENY UPDATE for **APRIL** 2013



Doheny before it was Doheny, mid 1920's

### **AIR QUALITY MANAGEMENT DISTRICT WANTS TO BAN FIRES / FIRE RINGS FROM ALL ORANGE COUNTY BEACHES**

The Orange County Air Quality Management District is considering (and leaning favorably towards) **prohibiting open bonfires on Orange County beaches**. Such a ban would affect all day-use areas in Doheny and probably the campground, as well. <http://www.ocregister.com/articles/agency-499989-beach-fire.html>. California State Parks Orange Coast District Superintendent Brian Ketterer (Doheny is in the Orange Coast parks district) spoke against the ban at a public consultation hearing held in Diamond Bar on March 28<sup>th</sup>. **“Recreational open fires bond friendships,” said Brian Ketterer. “It promotes positive mental health. There’s a balance between air quality and quality of life.”** <http://www.hbindependent.com/opinion/tn-hbi-0404-pipeline-fire-rings-20130404,0,883000.story>



**DSBIA AWARDED GRANT FROM CSPF:** DSBIA is honored to announce we have received a \$2,285 grant from the California State Parks Foundation for use in restoring the Doheny Whale Walk. Currently, three whales have been painted; a gray, a humpback and an orca. More are planned, but the painters are taking a break as new tables are scheduled to be placed in the area by heavy machinery.

**SUNRISE / SUNSET:** On April 1<sup>st</sup>, we gain 2-minutes and 6 seconds of sunlight from the day before. April 30, we gain 1 minute and 49 seconds from the previous day. As Earth passes through the Spring Equinox, it starts to slow down on the amount of daylight we add each day. On June 22, we'll start subtracting time with our amount of daylight growing shorter each day.

April 1: Sunrise @ 6:40 AM / Sunset @ 7:14 PM = **12hrs. 34 mins. 09 secs. of sun.**

April 30: Sunrise @ 6:04 AM / Sunset @ 7:36 PM = **13 hrs. 31 mins. 53 secs. of sun.**

**GAINED MINUTES OF DAYLIGHT:** +36 AM minutes / +22 PM minutes **Total: +58 minutes**

**WELCOME TO THE BOARD, MICHAEL AHUMADA:**

Michael Ahumada was appointed to the open DSBIA Board of Directors position at the February Board meeting. Mike is a local resident and ReMax Realtor in the Beach Cities area. He can often be found surfing the local breaks, and volunteering at DSBIA events (this man can pour a beer!). Mike is pictured here with his wife Sierra and son Kai.



**EARTH DAY NATIVE PLANTING PROJECT, SATURDAY**

**APRIL 13, 9AM TO NOON:** Join Park Naturalist Vicki Wicker to plant an assortment of native plants, shrubs, and trees around the park. Doheny wishes to warmly thank Starbucks for supporting this project! Thank you for bringing along your favorite shovel and working gloves. Please call for meeting location. (949) 496-2704

**DOHENY WOOD ,SATURDAY, APRIL 13<sup>TH</sup>, 9AM TO 1 PM:** Doheny Wood is one of the Premier Woodie Events of the year, presented by the largest Woodie organization in the world, **Southern California Woodie Club**. Doheny Wood is a wooden vehicle only event, and has been running continuously since 1997 with almost 200 woodies of all makes and models in attendance.



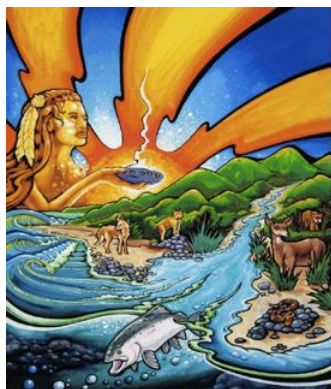
The Doheny Wood event is free to the public, but there is a state day use fee to drive into the to park inside the State Park.

In addition to all the wonderful woodie wagons on display, the event has a large raffle including many woodie and surf related items. For sure, a COWABUNGA event.

<https://sites.google.com/site/socalwoodieclub/doheny-wood>

**DOHO BEACH CLEAN UP ON APRIL 20<sup>TH</sup>:** Last week we planted, this week we clean! We will be cleaning the beach, North and San Juan creeks, and general grounds of Doheny State Beach. Thank you for bringing along working gloves. Meeting location: Lifeguard headquarters, from 9AM to Noon.

**EARTH DAY AT PANHE, 2012:** The Acjachemen [ah/ha/she/ mahn] were the people who lived along our coastline 9,000 years ago; from Laguna to north Oceanside and inland to the Santa Ana Mountains. They were the ones to greet the first Spanish explorers in 1769. Locally, they had numerous villages in the Capistrano Valley and in south San Clemente in the San Mateo (San Onofre) Creek area. Panhe was a village located inland of south San Clemente and is now under the stewardship of the California State Parks. The following link takes you to a video sponsored by California State Parks and the San Onofre Foundation (SOF), celebrating the Acjachemen culture at the SOF Earth Day event in 2012. <http://vimeo.com/61777164> Visit this next link for information on this year's celebration on Sunday, April 21.



<http://sanofoundation.org/site/events>

**Join our SOF friends for Earth Day at Panhe,  
2013 on Sunday, April 21.**



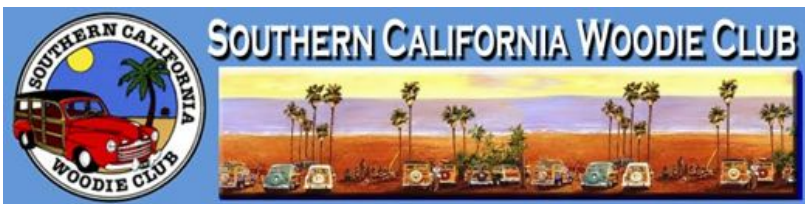
### **PREPING FOR THE FESTIVAL OF WHALES:**

Park Naturalist Vicki Wiker and a crew of park volunteers prepare the Park's entry in the **Festival of Whales Parade** held on March 2<sup>nd</sup>. (Thanks, Jess Lopez, for the photos) Doheny State Beach and DSBIA also hosted the annual **Grunion 10K, 5K and Kids' 1K Run** on Saturday, March 9<sup>th</sup>. DSBIA made a profit of \$3,800 from the event.



**CALENDAR:** Not all events are DSBIA sponsored, but all will be fun.

**SATURDAY, APRIL 13: DOHENYWOOD, 8AM to 3PM:** Come see the hottest and coolest woodies to be found on the coast. It's the annual Southern California Woodie Club Car Show held in the South Day-Use area of the park.



<https://sites.google.com/site/socalwoodieclub/doheny-wood>

**SATURDAY, APRIL 13: EARTHDAY NATIVE PLANTING, 9 AM to 1 PM** Join park Naturalist Vickie Wiker and plant some native species to re-green the park. See information above.

**SATURDAY, APRIL 20, MOTHER EARTH BEACH, CREEK AND PARK CLEANUP, 9 AM TO NOON:** Thank you for bringing along working gloves. Meeting location: Lifeguard headquarters. Thank you for loving that Earth! See info above.

**SATURDAY, APRIL 20 DANA POINT WINE FESTIVAL, 11 AM TO 4 PM** Hit the grassy, palm-lined Doheny State Beach to experience the quintessential California wine tasting event at our Orange County California Wine Festival grand finale. <http://www.californiawinefestival.com/eventschedule.html>

**SUNDAY, APRIL 21, EARTH DAY AT PANHE, A NATIVE AMERICAN CELEBRATION:** Join our friends of the San Onofre Foundation and the Acjachemen / Juaneno people in celebrating native American culture at the San Mateo Campground, San Onofre State Beach in San Clemente. Visit the link for information on events and transportation from south San Clemente to San Mateo Campground. <http://sanofoundation.org/site/events>

**SATURDAY & SUNDAY, MAY 18 & 19, DOHENY BLUES FESTIVAL:** Oh yeah, we be rock'n! <http://www.dohenybluesfestival.com/>

**OYE, MATE!!! NOT A DSBIA MEMBER YET?** Join us in supporting the mission of DSBIA to provide activities and materials to educate the public about the natural and cultural importance of Doheny State Beach. **Here's a printable membership form.** [http://www.dohenystatebeach.org/pdf/DSBIA\\_Membership\\_App\\_Rev-2010.pdf](http://www.dohenystatebeach.org/pdf/DSBIA_Membership_App_Rev-2010.pdf)

**MONTHLY BOARD MEETINGS:** With the exception of December, DSBIA Board of Directors meetings are held on the third Thursday of the month, 7 PM at the Double Tree Hotel on Pacific Coast Highway across from Doheny State Beach in Dana Point. Meetings are open to all DSBIA members.

**VISIT OUR WEB SITE** at <http://www.dohenystatebeach.org/index.html>

**DOHENY SURF CAMERA:** [http://www.surflife.com/surf-report/doheny-southern-california\\_4848/](http://www.surflife.com/surf-report/doheny-southern-california_4848/)

**QUESTIONS? FEEDBACK?** Please direct any questions, feedback or requests for removal from our mailing list to [DPKayak@gmail.com](mailto:DPKayak@gmail.com) .

**VISIT OUR WEB SITE** at <http://www.dohenystatebeach.org/index.html>

**QUESTIONS? FEEDBACK?** Please direct any questions, feedback or requests for removal from our mailing list to [DPKayak@gmail.com](mailto:DPKayak@gmail.com) .

**DISCLAIMER:** This listserv email contains hypertext links to information created and maintained by other public and private organizations. These links are provided for your convenience. Doheny State Beach Interpretive Association does not control or guarantee the accuracy, relevance, timeliness or completeness of this outside information. Further, the inclusion of links to particular items in hypertext are not intended to reflect their importance, nor is it intended to endorse any views expressed or products or services offered on these outside sites, or the organizations sponsoring the sites.



***DSBIA IS A MEMBER OF***



# CALIFORNIA LEAGUE OF PARK ASSOCIATIONS

*Partners in park sustainability, education and advocacy!*

