



OC Dana Point Harbor

Brad Gross, Director

(949) 923-2236

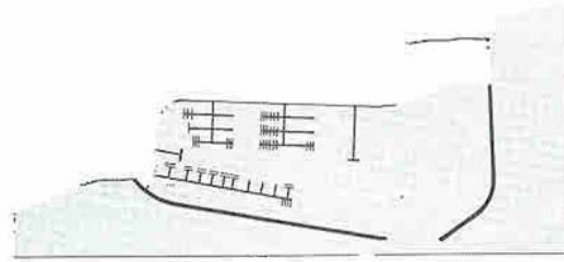
www.DPHplan.com



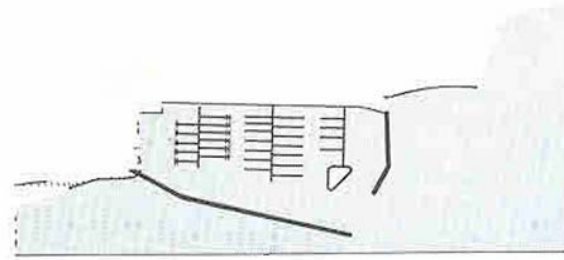
September 2008

Evolution of Planning for Dana Point Harbor

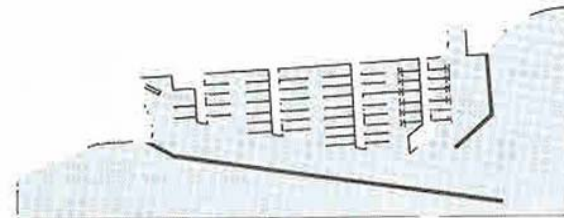
Based on Final Interior
Design Study
County of Orange
1966



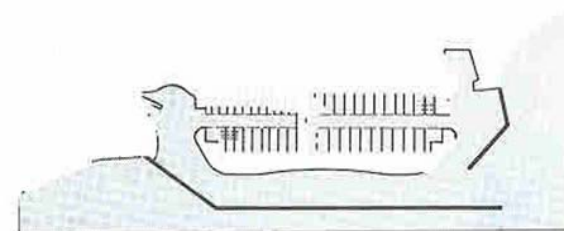
R.L. Patterson
Plan, 1949



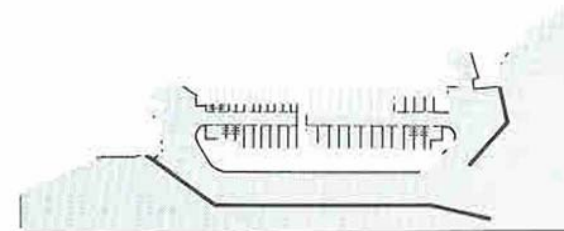
OC Harbor District
Plan, 1959



Corps of
Engineers Plan,
1961



Engineering
Consultant
Plan, 1964



Final Design,
1965



**276 Acres
Established 1970**

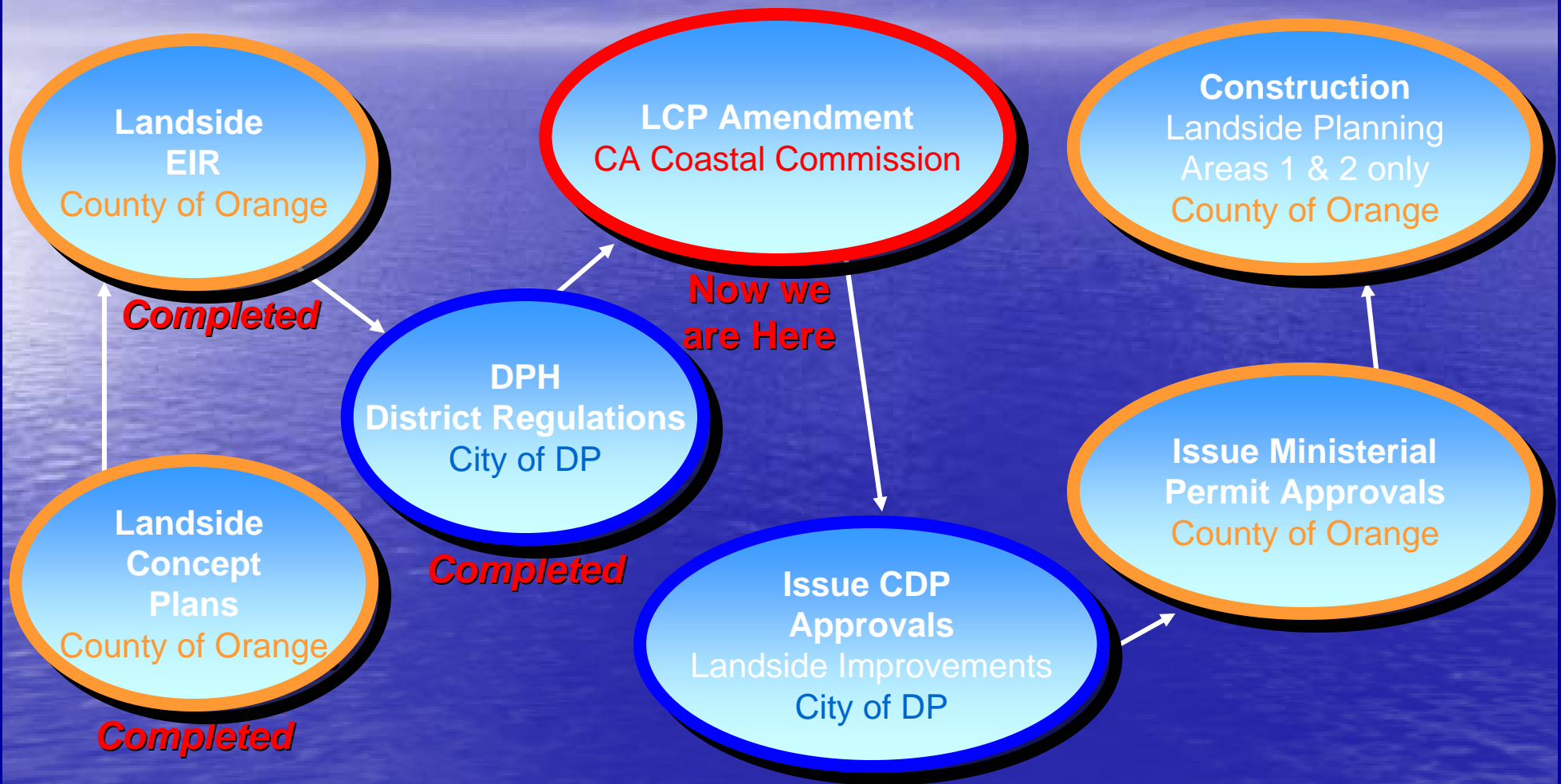
Public Input Opportunities

- Task Force formed in 1997
- 21 Community Meetings
- 15+ Presentations to Local Groups and DPH Yacht Clubs
- Monthly Dana Point Merchants Association Meetings
- Numerous Meetings with Boaters and Merchants



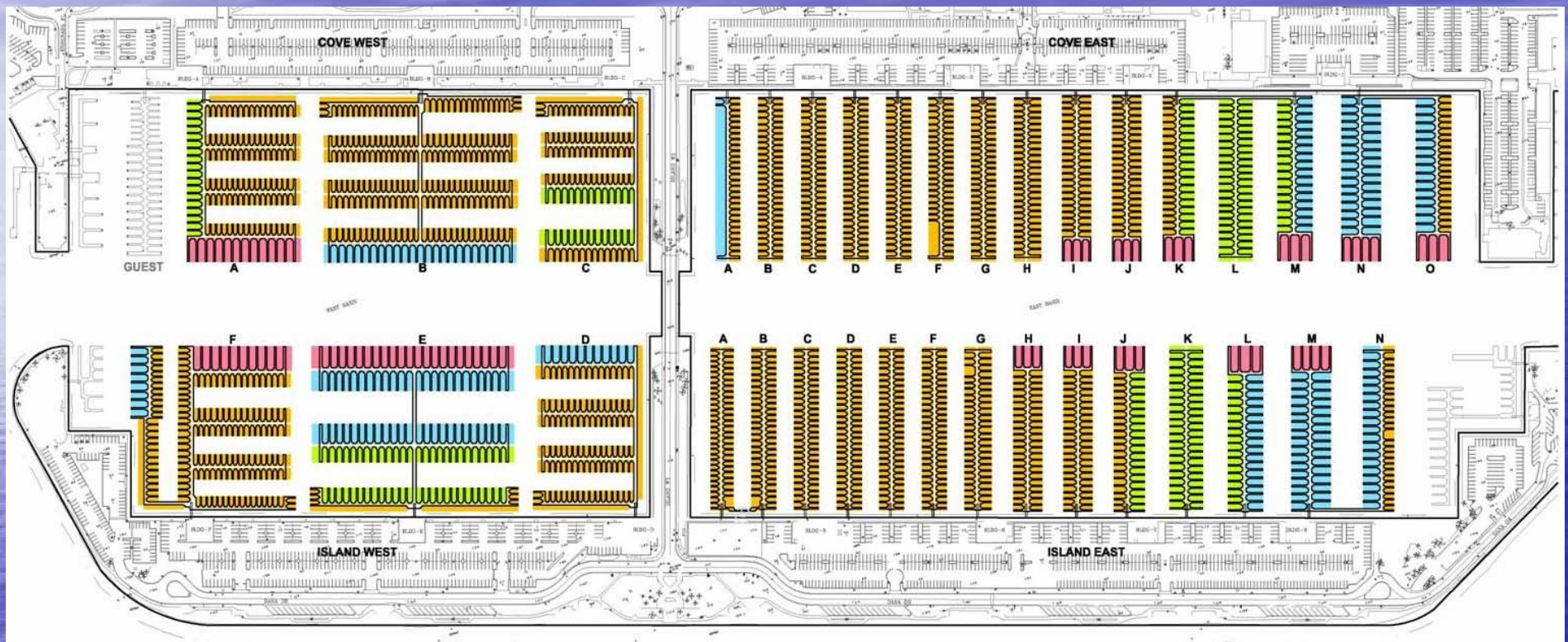


Landside Processing Steps



Waterside Existing Layout

29.85' avg. slip size – 2409 slips

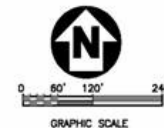


SLIP SIZE
30' & Under
31' to 38'
39' to 49'
over 50'
TOTAL
NET GAIN/LOSS
AVG SIZE

EXISTING SLIPS	% OF TOTAL
1795	75%
273	11%
236	10%
105	4%
2409	100%
29.85	

LEGEND:

- 30' & UNDER
- 31' TO 38'
- 39' TO 49'
- OVER 50'



Alternatives Comparison Summary

SLIP SIZE	EXISTING SLIPS	% OF TOTAL	ALT. 1	% OF TOTAL	ALT. 2	% OF TOTAL	ALT. 3	% OF TOTAL	ALT. 4	% OF TOTAL	ALT. 5	% OF TOTAL
30' & Under	1795	75%	1692	75%	1802	74%	926	48%	958	47%	1288	60%
31' to 38'	273	11%	241	11%	285	12%	586	30%	627	31%	444	21%
39' to 49'	236	10%	229	10%	243	10%	320	17%	350	17%	324	15%
over 50'	105	4%	92	4%	109	4%	100	5%	100	5%	102	5%
TOTAL	2409	100%	2254	100%	2439	100%	1932	100%	2035	100%	2158	100%
NET GAIN/LOSS			-155		30		-477		-374		-251	
AVG SIZE	29.85		29.51		30.03		33.97		33.99		32.48	

Waterside SEIR Process







OC Dana Point Harbor

Brad Gross, Director

(949) 923-2236

www.DPHplan.com

