



County of Orange Preliminary Status Report on Freeway Complex Fire Response and Recovery Plans

**County Executive Office
OC INFRASTRUCTURE
*Alisa Drakodaidis, Deputy CEO***



Activation of Emergency Operations Center

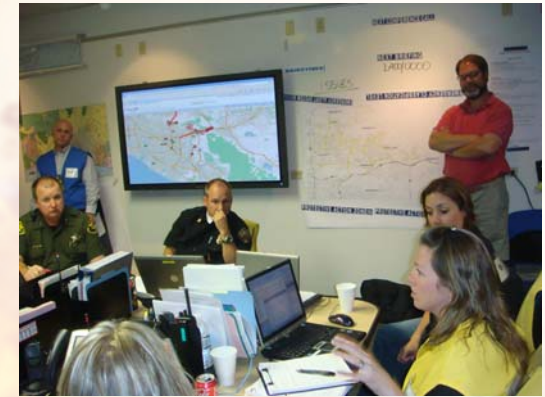
Donna Boston, Sheriff's Department
Emergency Manager

EOC Activated

→ 11:00 AM Saturday, November 15, 2008

Emergency Declaration

→ Chairman Moorlach Signs Disaster Proclamation



County Agency Response to EOC Activation

→ Sheriff's Department, OC Public Works, Health Care Agency, Social Services Agency, OC Community Resources, Probation Department, OC Waste & Recycling, District Attorney, Auditor-Controller, Assessor, John Wayne Airport, County Counsel, Treasurer-Tax Collector, Clerk of the Board, Child Support Services, County Executive Office, and Board of Supervisors



Acres Burned

→ Approximately 28,889 acres

Structures Destroyed/Damaged

- Anaheim – 31 residences destroyed, 44 damaged
- Brea – 3 residences destroyed, 1 damaged
- Corona – 8 residences destroyed, 9 damaged
- Yorba Linda – 113 residences destroyed, 50 damaged

County Impacted Facilities



Olinda Alpha Landfill Closed

- A crew of about 20 workers evacuated to the wet deck of Landfill and were unable to leave until the fire passed
- Customers notified to route waste to Frank R. Bowerman Landfill and staff redeployed accordingly

Structures Destroyed/Damaged

- Break room for the fee booth and a vehicle destroyed
- Pipes and headers of the Landfill Gas Recovery System are 40% destroyed and not operational
- Approximately 90% of the oak trees and coastal sage scrub has been burned in the expansion area of the Landfill
- Telephone poles and lines are down, currently operating on emergency generator power





County Impacted Facilities

Carbon Canyon Regional Park Closed

- Power lines down in the park
- Fire damage to vegetation within the creek and behind the dam, approximately 72 acres
- Split rail fencing, trail kiosks, park benches, and the small amphitheater are burned
- Staging area for Southern California Edison power restoration and repair activities



Featherly Regional Park

- Damage to restroom at Canyon RV Park
- Fire damage to vegetation in the bed of the Santa Ana River, approximately 200 acres



Green River Golf Course

- Served as a staging area for the City of Corona Fire Department



Yorba Regional Park

- Served as staging area for strike teams

Irvine Regional Park

- Serving as fire base camp for the unified command





County Response

Health Care Agency

- Monitored impact of the fires on hospitals and emergency medical service providers
- Public Health Nursing, Behavioral Health, and Environmental Health served the public at shelters and assistance centers
- Members of the OC Medical Reserve Corps staffed American Red Cross Shelter



Probation Department

- Monitored the safe return of Juvenile Court Work Program Crews
- Provided support to the EOC



OC Animal Care

- Provided services for pets at three shelters for evacuees
- Sheltered 30 animals evacuated from Yorba Linda Animal Hospital
- Staffed large animal shelters at Los Alamitos Race Track and Rancho de Rio Stables





County Recovery Plans

Social Services Agency

→ Lead responsibility for collaborating with County agencies, Operation OC non-profit partners, and other governmental agencies in opening a Local Assistance Center



→ Fire victims will be provided assistance at the East Anaheim Gymnasium located at 8165 E. Santa Ana Canyon Road, Anaheim, CA 92808 open from 8:00 am to 7:00 pm

OC Community Resources

→ OC Community Services collaborating with 211 and fielding calls for special requests to support caregivers of individuals with special needs, seniors, and disabled persons

→ OC Parks will continue to provide services for the Command Center Fire Camp Base and implement plans for addressing damage at regional parks

→ OC Animal Care continuing to provide shelter for animals impacted by the fire





County Recovery Plans

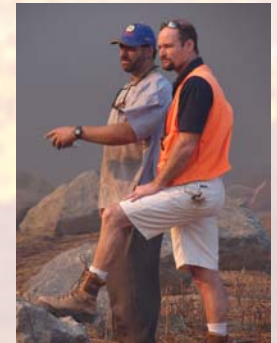
OC Waste & Recycling

- Plans have been implemented to reopen Olinda Alpha Landfill, which includes operating on generator power, establishing method to transmit data from fee booth to administration, and working with regulators to confirm requirements for operation
- Assessment of damage to Landfill Gas Recovery System underway and schedule for repair being developed



OC Public Works

- Public information materials for post fire erosion and mudslide dangers will be made available
- Assistance will be provided to cities in support of assessment programs and erosion protection
- A response structure, similar to that assembled for the Santiago Canyon Fire, will be put in place to provide support during significant rain events





County of Orange Preliminary Status Report on Freeway Complex Fire Response and Recovery Plans

Questions

- Activation of Emergency Operations Center
- County Impacted Facilities
- County Response
- County Recovery Plans

