



Marine Life Protection Act South Coast Regional Stakeholder Group

- 53 members attended
- (30 Primary and 27 alternates named)
- “There is no distinction between primaries and alternates in developing alternative MPA proposals in breakout sessions”
- Ken Wiseman, Executive Director



First Meeting Tasks

- Project goals, lessons learned
- Ground rules and decision making process
- Stakeholder backgrounds and interests
- Draft Regional Profile for South Coast Study Region

California Marine Life Protection Act Initiative

Draft Regional Profile of the South Coast Study Region (Point Conception to the California/Mexico border)

September 15, 2008
Draft



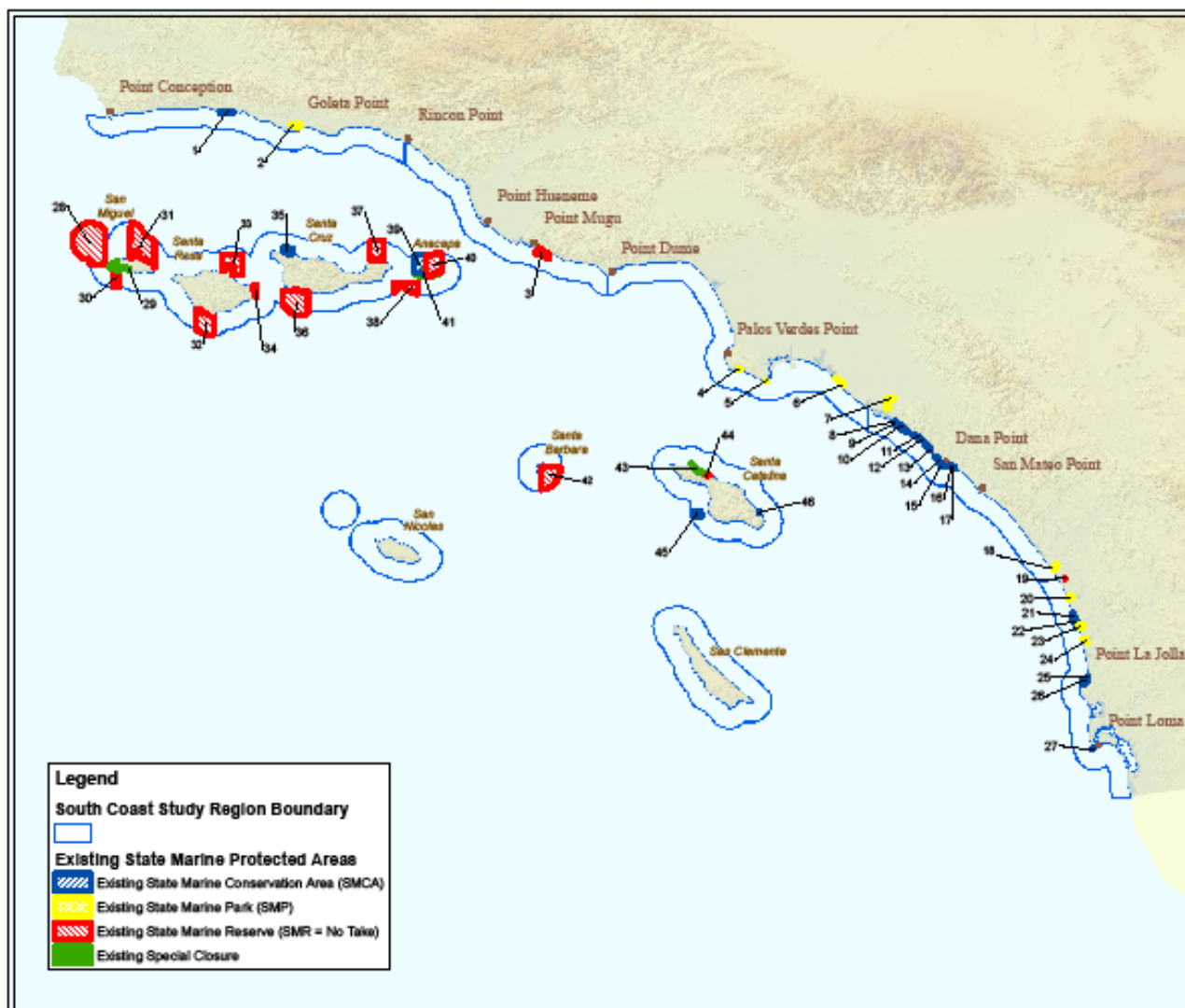


Study Regions

The study region has been divided into seven subregions. These subregions are designed simply to show data at a reasonable scale and are not based on any biogeographic criteria; nor are they used as the basis for any MPA evaluations.

1. Point Conception (Government Point) to Rincon Point
2. Rincon Point to Point Dume
3. Point Dume to Newport Beach
4. Newport Beach to Agua Hedionda
5. Agua Hedionda to the California - Mexico border
6. Northern Channel Islands
7. Southern Channel Islands

MLPA South Coast Study Region: Existing State Marine Protected Areas and Special Closures



Locality Map



Protected Area Name	Index
Refugio SMCA	1
Goleta Slough SMP	2
Big Sycamore Canyon SMR	3
Abalone Cove SMP	4
Point Pinnin SMP	5
Solera Chico SMP	6
Upper Newport Bay SMP	7
Robert E. Bachman SMCA	8
Crystal Cove SMCA	9
Irwin Coast SMCA	10
Helder Park SMR	11
Laguna Beach SMCA	12
South Laguna Beach SMCA	13
Higuera SMCA	14
Dana Point SMCA	15
Doheny SMCA	16
Doheny Beach SMCA	17
Buena Vista SMP (Not in Study Region)	18
Agua Hedionda Lagoon SMR	19
Beliquitos Lagoon SMP	20
Encinitas SMCA	21
Cardiff-San Elijo SMCA	22
San Elijo Lagoon SMP	23
San Dieguito Lagoon SMP	24
San Diego-Scorpio SMCA	25
La Jolla SMCA	26
Mit J. Tegner SMCA	27
Richardson Rock SMR	28
San Miguel Island Special Closure	29
Judith Rock SMR	30
Hartle Point SMR	31
South Point SMR	32
Carlingford Point SMR	33
Skunk Point SMR	34
Painted Cave SMCA	35
Gull Island SMR	36
Scorpion SMR	37
Footprint SMR	38
Anacapa Island SMCA	39
Anacapa Island SMR	40
Anacapa Island Special Closure	41
Santa Barbara Island SMR	42
Arrow Point to Lion Head Point Special Closure	43
Catalina Marine Science Center SMR	44
Farmers Bank SMCA	45
Lover's Cove SMCA	46



Marine Life Protection Act Initiative

Projection Information:

Name: NAD 1983 California Teale Albers
 Projection: Albers
 Datum: North American 1983



0 3757.5 15 Miles
 1:1,750,000

Data Sources:

California Department of Fish and Game

Version: 1.1

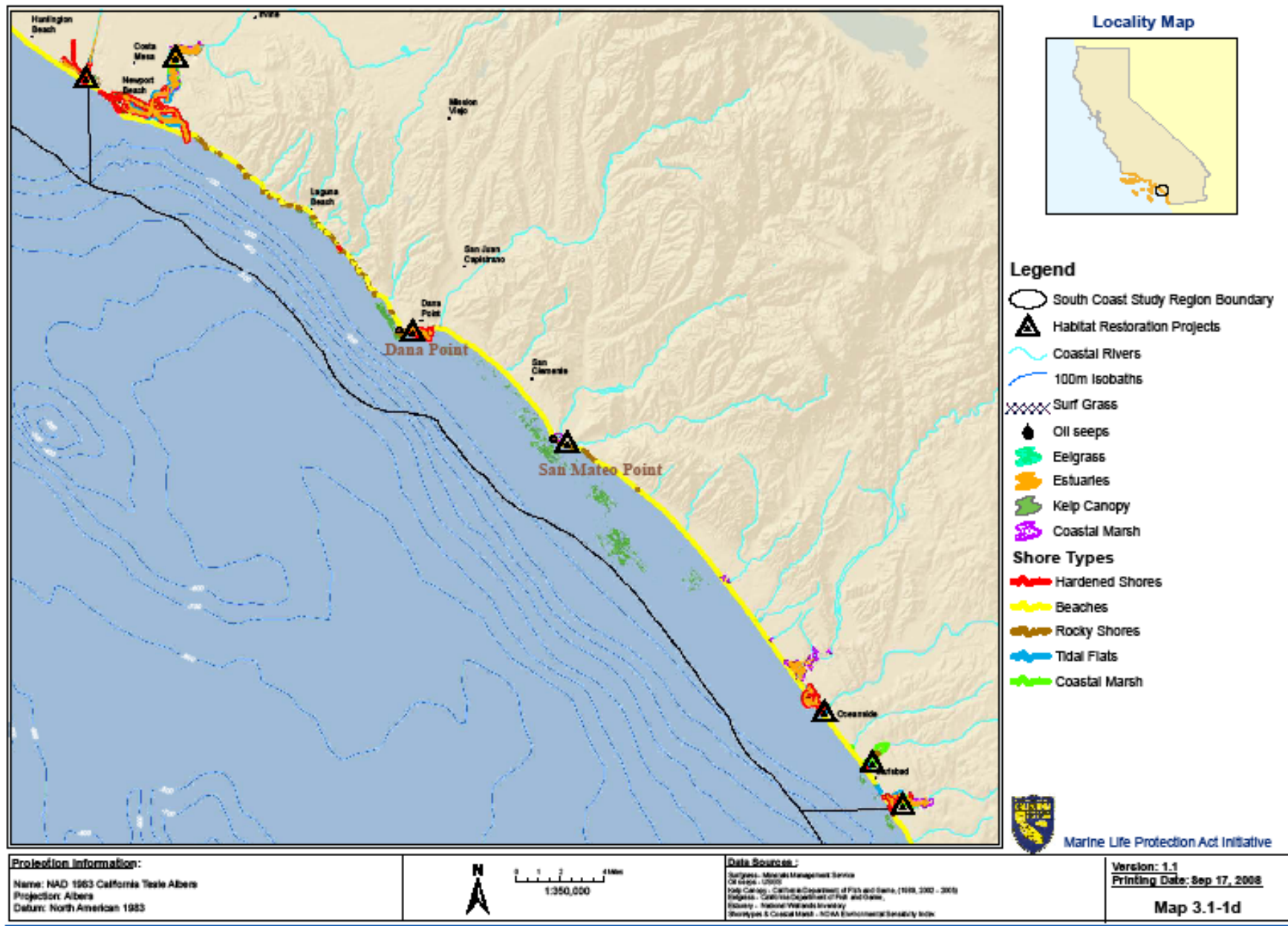
Printing Date: Sept 10, 2008

Map 2.0 - 1



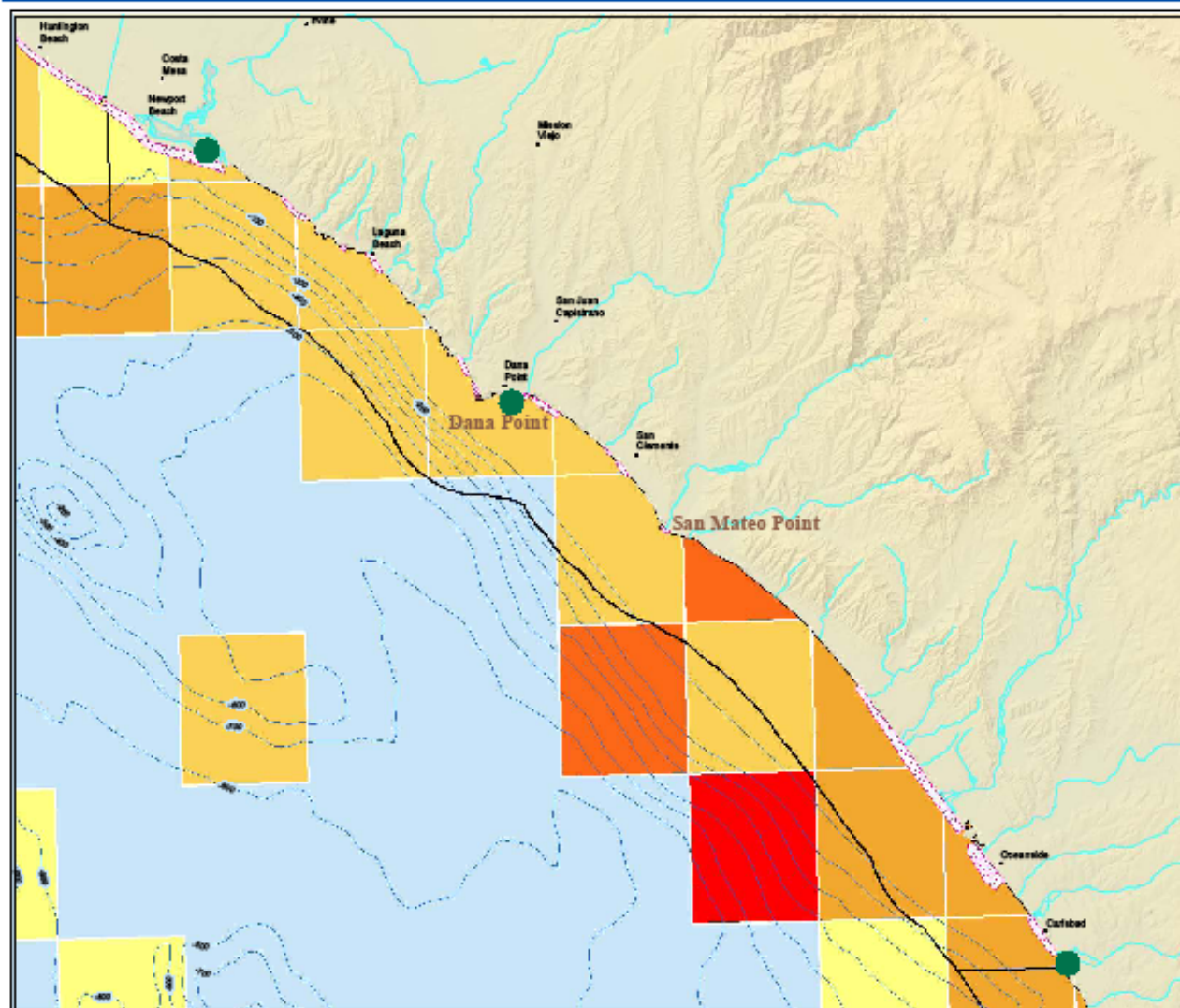
Orange County

“The coastline along Orange and northern San Diego counties can be characterized as sandy beaches backed by wave cut platforms and mostly sandy subtidal areas. Numerous small creeks and rivers form a large number of coastal estuaries and lagoons, which vary in tidal influence.”



Areas of Fish Biodiversity

Subregion 4 - Newport Beach to Agua Hedionda



Locality Map



Legend

- South Coast Study Region Boundary
- White Seabass Growout Facilities
- Grunion Spawning Locations
- Coastal Rivers
- 100m Isobaths

Composite Fish Diversity

- 1 Low
- 2
- 3
- 4
- 5 High

Disclaimer:

The map depicts the top 20th percentile demersal (bottom) fish diversity and density based on fisheries-independent trawl surveys (National Marine Fisheries Service and CDFG) and other data as compiled in the NOAA Biogeographic Assessment in 2005.

The areas and uses identified on this map represent an approximation of some (not all) important areas of biodiversity in the MLPA South Coast Study Region. It should be noted that not the areas of fish biodiversity are represented on this map.

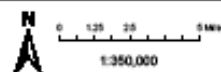
The data shown on this map was the best readily available information as of August 28, 2008.



Marine Life Protection Act Initiative

Projection Information:

Name: NAD 1983 California State Albers
Projection: Albers
Datum: North American 1983



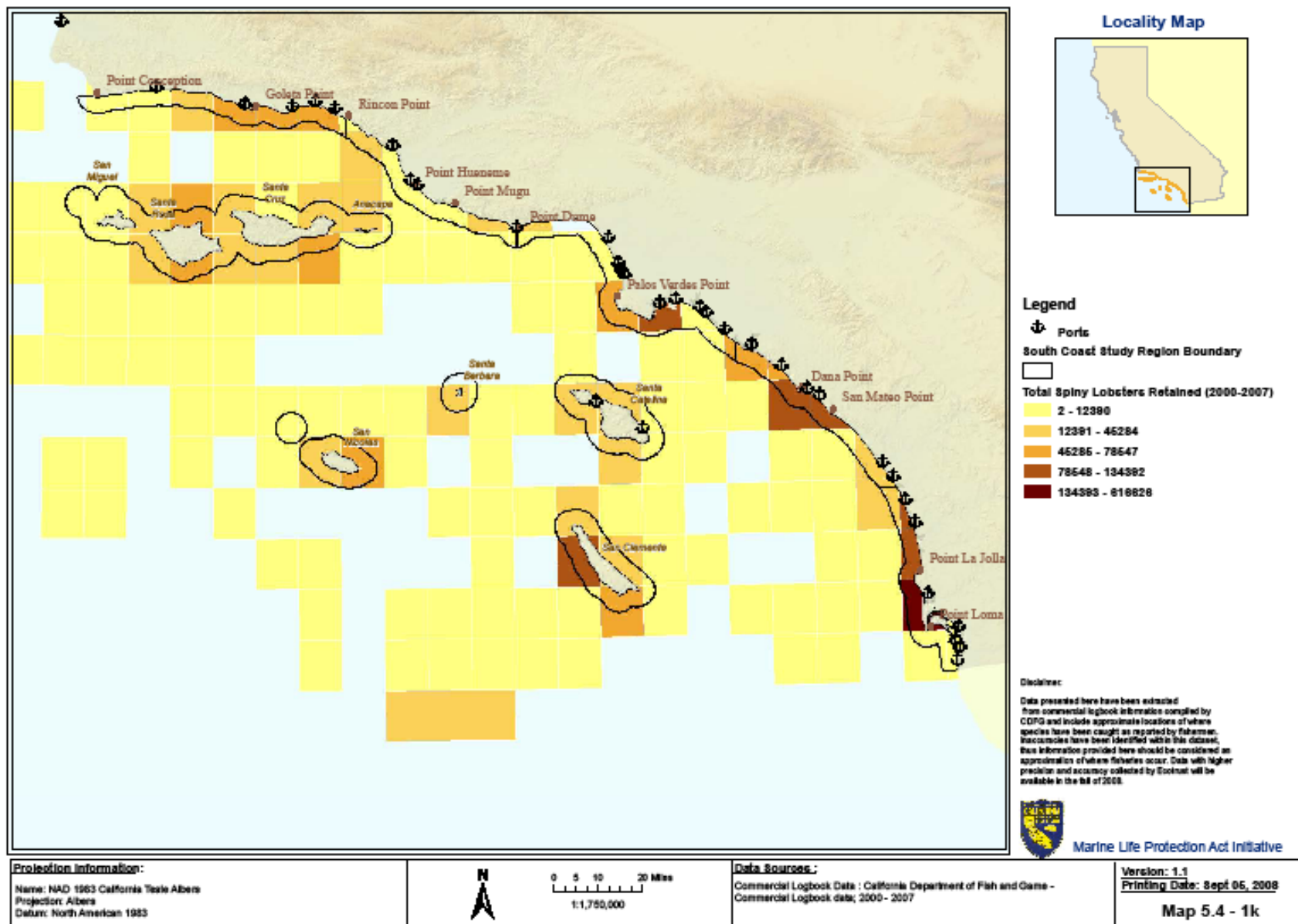
Data Sources:

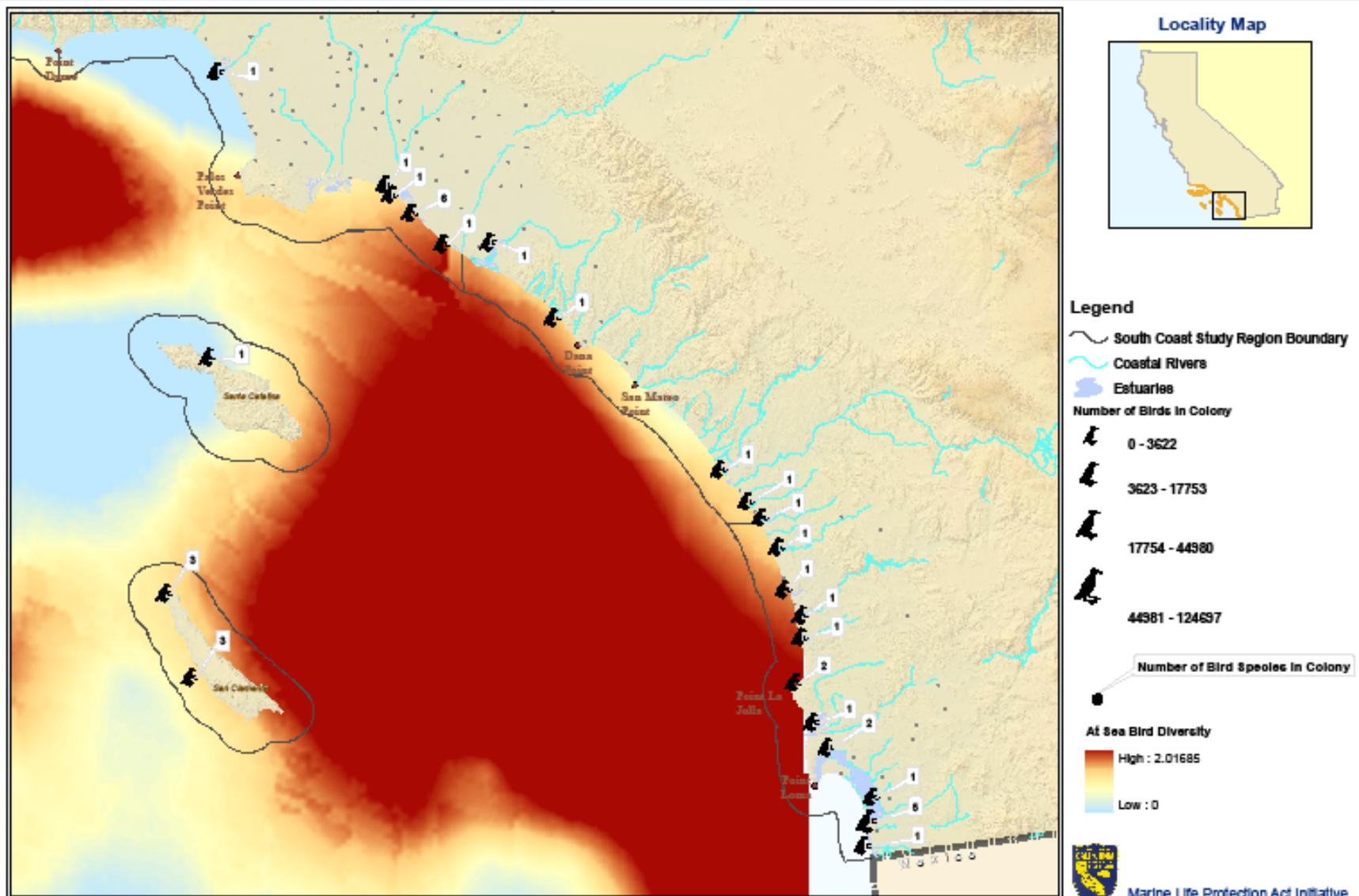
Diversity - NOAA Biogeographic Assessment - Channel Islands MMS
Grunion, White sea bass data - California Department of Fish and Game

Version: 1.1

Printing Date: Sep 16, 2008

Map 3.2 - 2 d





Projection Information:

Name: NAD 1983 California Teale Albers
 Projection: Albers
 Datum: North American 1983



0 50 100
 1:1,000,000

Data Sources:

Bird Colonies - NOAAUSF&W seabird colony database
 Bird Diversity - NOAA Biogeographic Assessment - Channel Island NMS

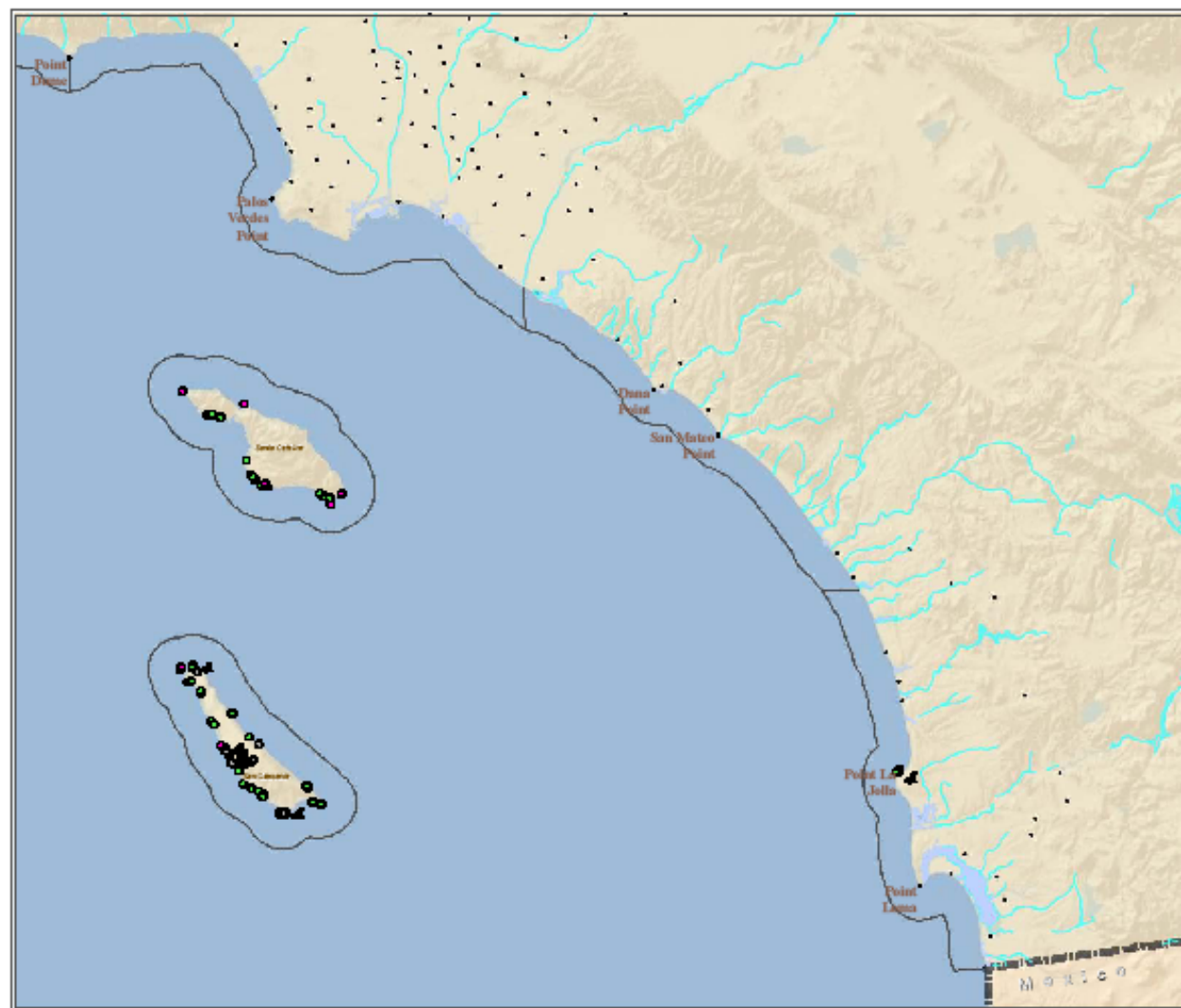
Version: 1.1

Printing Date: Sep 17, 2008

Map 3.2 - 1b

Marine Mammal Haulouts and Rookeries

Southern Portion of Study Region



Locality Map



Legend

South Coast Study Region Boundary

Coastal Rivers

Estuaries

Pinniped Haulouts

California sea lion

Guadalupe fur seal

Harbor seal

Northern elephant seal

Northern fur seal

Steller sea lion

Pinniped Rookeries

Pinniped Rookeries

Disclaimer:

This map depicts the locations of pinniped haulouts and rookeries in the study region. In general, the positional precision of these data is low. The data were collected from 1996 to 2005.



Marine Life Protection Act Initiative

Projection Information:

Name: NAD 1983 California State Albers
Projection: Albers
Datum: North American 1983



0 5 10 Miles
1:1,000,000

Data Sources:

Mammal Haulouts and Rookies - National Marine Fisheries Service
<http://sewrnrmf.com.gov/ped/rookeryhaulout/index.htm>

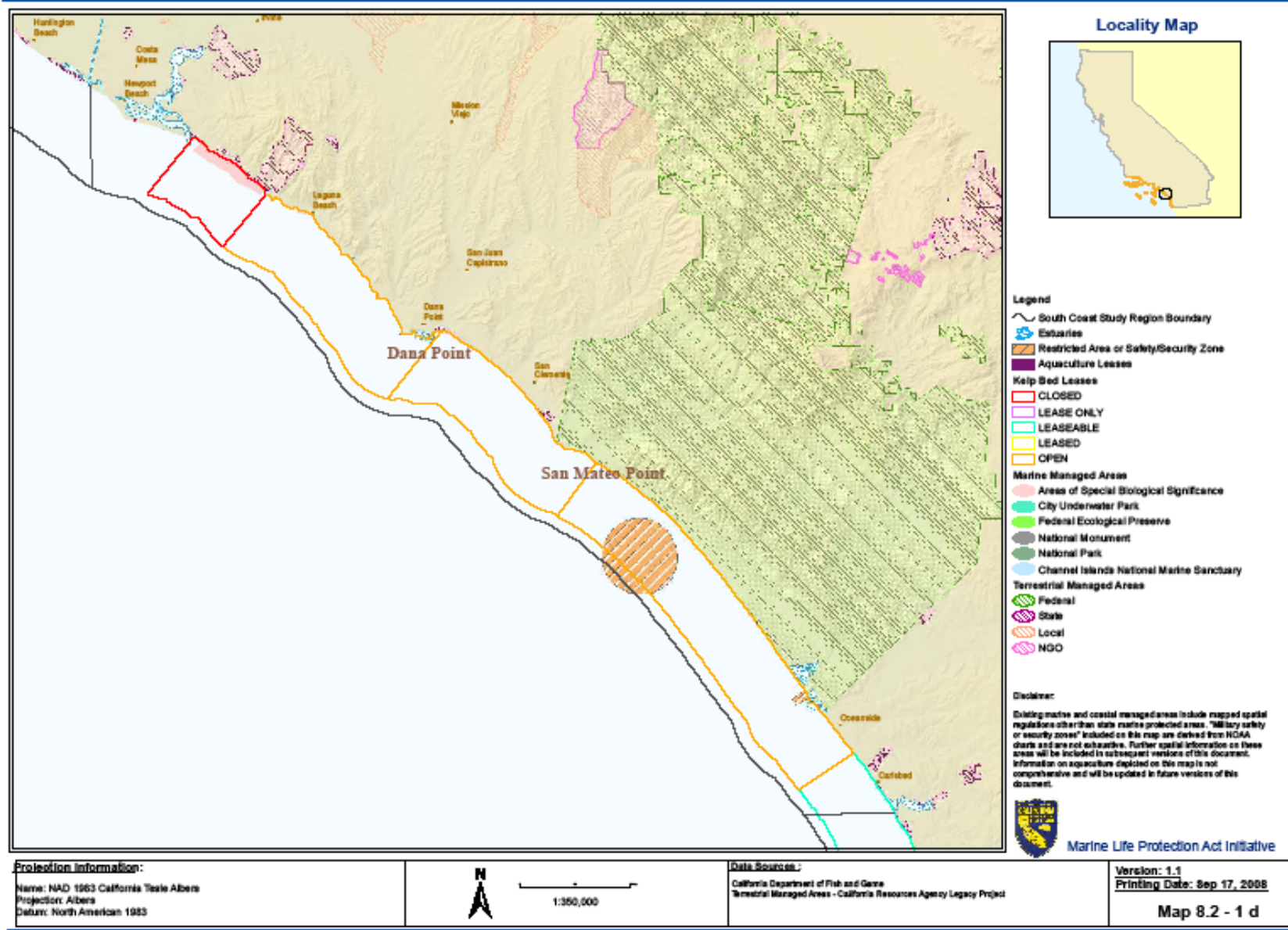
Version: 1.1

Printing Date: Sep 11, 2008

Map 3.2.1 - 1d

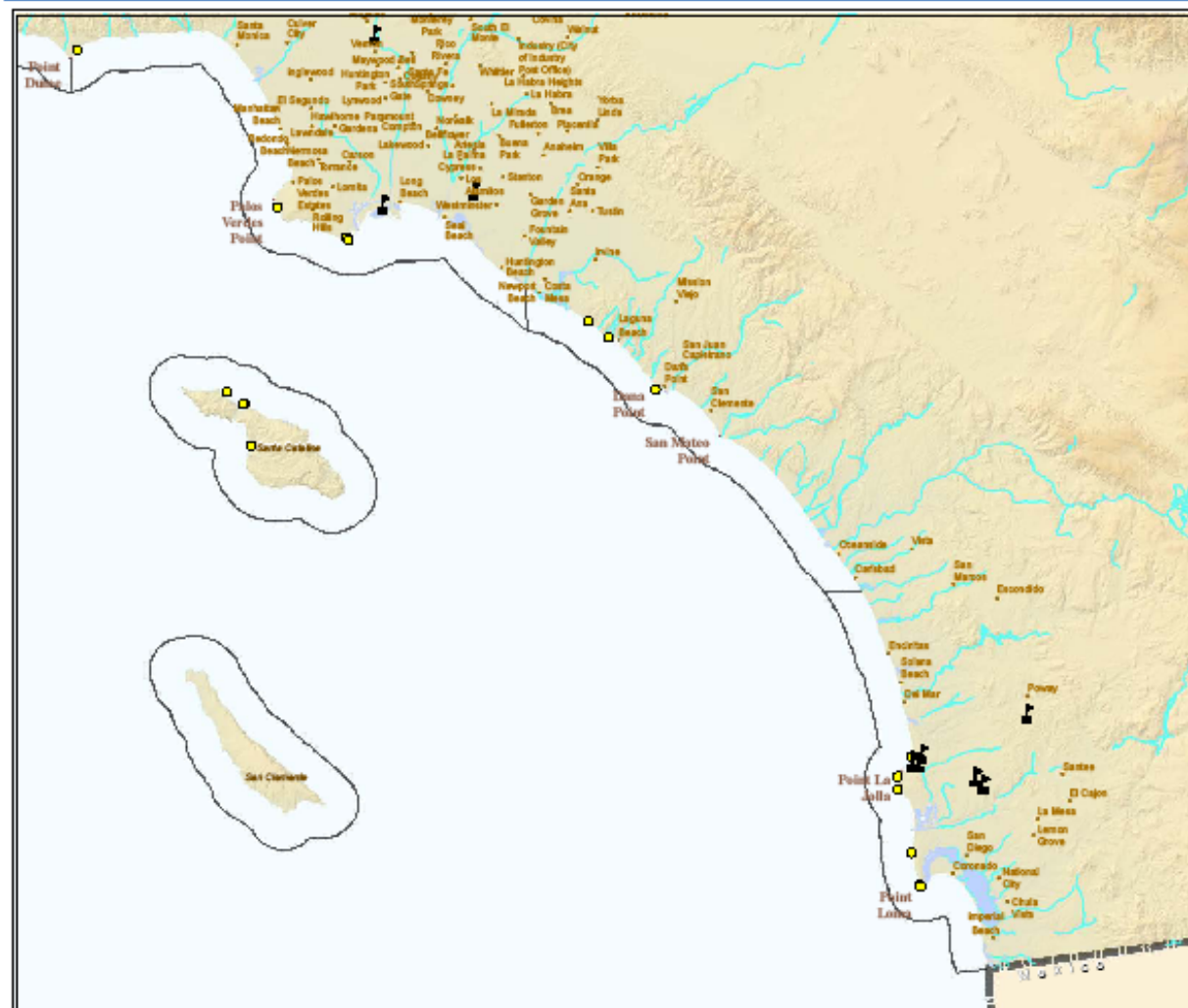
Existing Marine and Coastal Managed Areas

Subregion 4 - Newport Beach to Agua Hedionda



Research, Education and Monitoring Sites

Southern Portion of Study Region



Locality Map



Legend

- South Coast Study Region Boundary
- Coastal Rivers
- Research Institutions
- Marine Monitoring Sites selection
- MARine Monitoring Sites
- PISCO Monitoring Sites

Notes:
MARine - Multi-Agency Rocky Interidal Network
PISCO - Partnership for Interdisciplinary Studies of Coastal Oceans



Marine Life Protection Act Initiative

Projection Information:

Name: NAD 1983 California Teale Albers
Projection: Albers
Datum: North American 1983



1:1,000,000

Data Sources:

UC Santa Barbara, 2008

Version: 1.1

Printing Date: Sep 17, 2008

Map 6.1 - 1b



Depleted and Overfished Species

- Groundfish (rockfish, flatfishes)
- Steelhead Trout
- Giant Sea Bass
- Abalone

Special Status Species

- Salt Marsh Bird's Beak
- Ventura Marsh Milk-Vetch
- Tidewater Goby
- Garibaldi



Tide-pooling sites in the south coast study region – Orange County

- Little Corona Del Mar Beach
- Crystal Cove State Park
- Glenn E. Vedder Ecological Reserve
- Dana Point
- Treasure Island Beach
- Three Arch Cove Beach
- Doheny State Beach
- San Clemente State Beach



Orange County Marine Protected Areas



When: Comments are welcome and requested no later than October 31, 2008

Where: *The profile is available in three ways:*

1. Online at <http://www.dfg.ca.gov/mlpa/scprofile.asp>
2. On CD by contacting Kathie Magnuson
(Kathie.Magnuson@resources.ca.gov or 916.653.9486)
3. In print form at libraries and California Department of Fish and Game offices
(see below for complete list of libraries and offices)

Comments may be submitted by:

Email to MLPAComments@resources.ca.gov

Fax to 916.653.8102 (Attention: MLPA Initiative)

Postal service to MLPA Initiative
c/o California Resources Agency
1416 Ninth Street, Suite 1311
Sacramento, CA 95814



Upcoming meetings

Tuesday, November 4, 2008

Blue Ribbon Task Force

Sheraton Gateway Los Angeles Hotel
6101 West Century Boulevard
Los Angeles, CA 90045

Tuesday, November 12, 2008

Master Plan Science Advisory Team

Sheraton Gateway Los Angeles Hotel
6101 West Century Boulevard
Los Angeles, CA 90045

**Tuesday, November 18, 2008 and
Wednesday, November 19, 2008**

SC Regional Stakeholder Group

Crowne Plaza
450 East Harbor Boulevard
Ventura, CA 93001

Wednesday, December 17, 2008

Master Plan Science Advisory Team

Location TBD

Tuesday, January 13, 2009 and

Wednesday, January 14, 2009

SC Regional Stakeholder Group

Location: San Diego area

Tuesday, January 27, 2009

Master Plan Science Advisory Team

Location TBD