

# NATURE RESERVE OF ORANGE COUNTY

## NEWS RELEASE

## *For Immediate Release*

June 2, 2014

**Irvine, California--** Between June 9 and June 20, the Nature Reserve of Orange County (NROC), in collaboration with the California Department of Fish and Wildlife, California State Parks, OC Parks, City of Irvine, City of Newport Beach, Irvine Ranch Conservancy and the Laguna Canyon Foundation, will conduct an aerial weed survey during daylight hours using a small, low-flying helicopter to document and map the distribution of over 30 weed species located within selected coastal parks and open space areas. The resulting information will provide details about the abundance and distribution of invasive weeds and help land managers evaluate the effectiveness of current weed monitoring practices, identify emerging weed problems, and strategically plan future weed management actions.

Notices describing the aerial weed survey will be posted at trailheads at participating parks and open space areas during the project period.

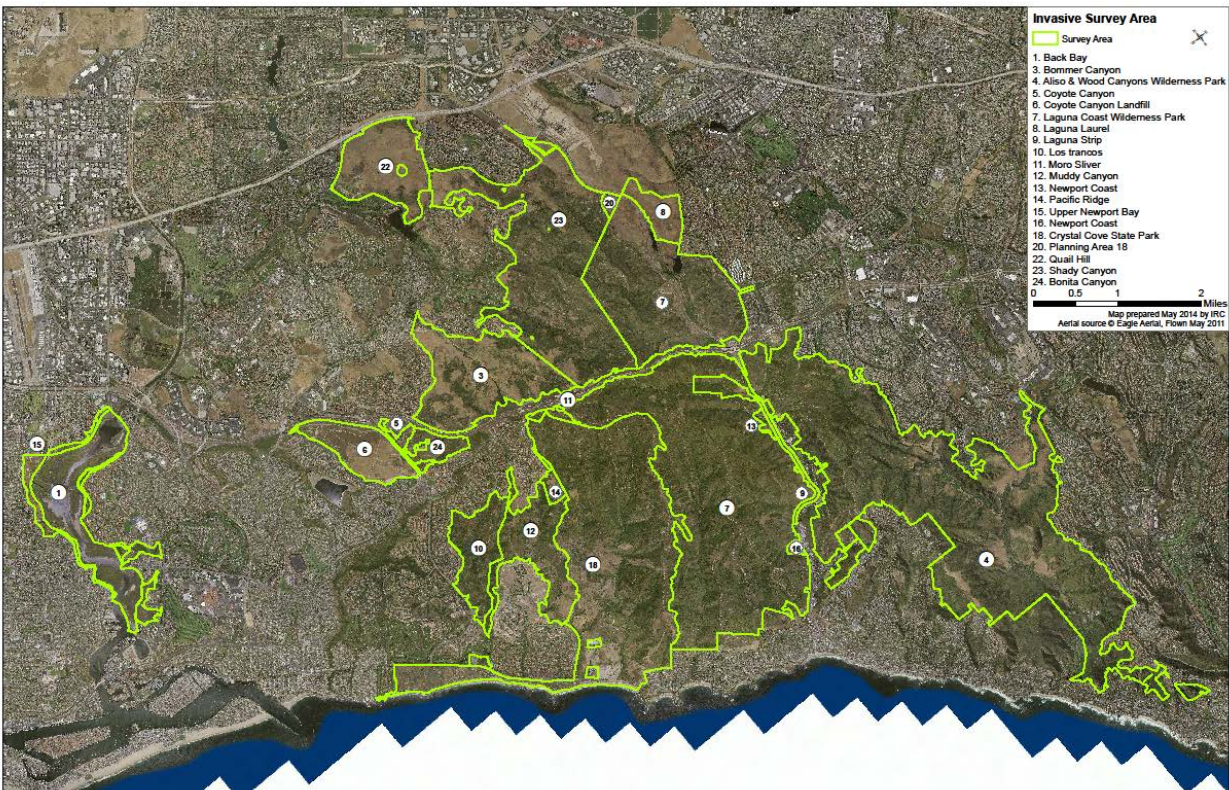
The aerial weed survey will be focused on mapping the distribution of artichoke thistle and a minimum of 30 other established and emerging invasive weeds which degrade natural habitat values important to wildlife and the park visitor experience. The survey will cover nearly 18,000 acres and involve the following land areas (also see attached map):

Aerial Survey Area	Ownership
Bonita Canyon	City of Irvine
Bommer Canyon	City of Irvine
Shady Canyon	City of Irvine
Quail Hill	City of Irvine
Laguna Laurel	OC Parks
Laguna Coast Wilderness Park	OC Parks
Crystal Cove State Park	California State Parks
Laguna Laurel Ecological Reserve	California Department of Fish and Wildlife
Coyote Canyon Landfill	OC Waste & Recycling
Aliso & Wood Canyons Wilderness Park	OC Parks
James Dilley Greenbelt Preserve	OC Parks
Upper Newport Bay Ecological Reserve	California Department of Fish and Wildlife
Upper Newport Bay Nature Preserve	OC Parks

**-OVER-**

The aerial survey will be conducted by an experienced team, Wildlands Conservation Science LLC, using a small helicopter (Schweizer-333) and a crew of three (an experienced pilot and two biologists conducting the survey). Surveys are conducted at low speeds and altitudes—15 to 20 mph and 30 to 150 feet respectively. Aerial surveys are limited to the hours between 7:00 a.m. and 6:00 p.m., from June 9 to June 20, 2014.

For more information please contact Milan Mitrovich, Ph.D., Science Coordinator, Nature Reserve of Orange County at 949-453-3326 or [mitrovich@naturereserveoc.org](mailto:mitrovich@naturereserveoc.org).



*Proposed aerial weed survey area within the Coastal Subregion of the Orange County NCCP and adjacent protected areas.*

#####