




ORANGE COUNTY TRANSPORTATION AUTHORITY

**Measure M2 Progress Report for July 2012 Through
September 2012**

Staff Report



November 9, 2012

To: Members of the Board of Directors
From: Will Kempton, Chief Executive Officer 
Subject: Measure M2 Progress Report for July 2012 Through September 2012

Overview

Staff has prepared a Measure M2 progress report for the period of July 2012 through September 2012 for review by the Orange County Transportation Authority Board of Directors. Implementation of Measure M2 continues at a fast pace, and revenue projections continue on a positive trend. This report highlights progress on Measure M2 projects and programs and will be available to the public via the Orange County Transportation Authority website.

Recommendation

Receive and file as an information item.

Background

The Measure M2 (M2) transportation ordinance and investment plan, Ordinance No. 3, requires quarterly status reports regarding the major projects detailed in the ordinance be filed with the Orange County Transportation Authority (OCTA) Board of Directors (Board). All M2 progress reports are posted online for public review.

Discussion

This quarterly report reflects current activities as progress within the overall M2 Program for the period of July 1, 2012 through September 30, 2012 (Attachment A).

The report has been revised to better reflect the progress of all M2 projects and programs. The report is designed to be easier to navigate and more public friendly, reflecting OCTA Strategic Plan transparency goals. The report includes budget and schedule information included in the Capital Action Plan (CAP), Local Fair Share and Senior Mobility Program payments made to cities this quarter, as well as total

payments from M2 inception to September 30, 2012. Next quarter, staff will include additional reporting highlighting the status of M2020 projects and communicate project issues or updates to keep the Board informed and, ultimately, ensure delivery of the program by 2020.

Quarter Highlights

- OCTA is preparing an environmental study to widen Interstate 405 (I-405) through the unincorporated area of Rossmore and the cities of Costa Mesa, Fountain Valley, Garden Grove, Huntington Beach, Los Alamitos, Seal Beach, and Westminster. The Board has had a number of discussions regarding the best widening approach and is scheduled to select the locally preferred alternative on October 22, 2012. These improvements will add mainline capacity and improve the local interchanges along the corridor. The final environmental document is expected to be complete in summer 2013.
- To improve traffic flow and increase safety on city streets, OCTA is working in partnership with the cities of Anaheim, Fullerton, and Placentia to build seven grade separations along the Orangethorpe Corridor to separate car traffic from trains. Of the seven, two (Kramer Avenue and Placentia Avenue) are under construction with 30 percent complete and are anticipated to be finished in 2014. Another two (Orangethorpe Avenue and Tustin Road/Rose Avenue) will be advertised for construction by the end of 2012, and the remaining three (Lakeview Avenue, Raymond Avenue, and State College Boulevard) are wrapping up design and are planned to have construction underway in 2013. Additionally, there is a grade separation project under construction along the Metrolink rail line in the City of Irvine. This project, on Sand Canyon Avenue, is currently 40 percent complete and planned to be finished in mid 2014.
- Staff developed and completed the M2020 Plan this quarter. A draft plan was presented to the Board on August 27, 2012, and the final plan was presented and approved by the Board on September 10, 2012. The M2020 Plan outlines the expedited M2 projects and programs to ensure delivery by 2020. The M2020 Plan implementing actions, approved by the Board on September 24, 2012, included directing staff to initiate an amendment process to the M2 Transportation Investment Plan and to develop an M2020 Plan of Finance.
- Following Board action on September 24, 2012, staff initiated the amendment process to the M2 Transportation Investment Plan. To address the \$709 million need in escalated dollars on the I-405 (Project K) and as

a result of capturing additional external funds and project cost savings on State Route 91 (Project J), staff recommended that \$709 million, a portion of the \$847 million currently available to Project J, be directed to Project K. This amendment provides significant M2 funding to deliver Project K (one lane in each direction) as promised to the voters. The amendment to the M2 Transportation Investment Plan was approved unanimously by the Taxpayer Oversight Committee on October 9, 2012. The proposed amendment will be presented to the OCTA Board for approval on November 9, 2012.

- The City of Anaheim continues moving forward on the Anaheim Regional Transportation Intermodal Center (ARTIC). On July 9, the Board approved the sale of approximately 13.5 acres of real property to the City of Anaheim (City) to facilitate the project delivery. On August 2, 2012, the City received eight bids for the construction of ARTIC. On September 11, 2012 the City awarded the construction contract to Clark Construction Group (Clark) in the amount of \$126,997,000. A groundbreaking ceremony was held on September 18, 2012. The City issued a notice to proceed to Clark on September 24, 2012. Demolition work is scheduled to begin in mid-October.
- On August 13, 2012, the Board approved updates to the Comprehensive Transportation Funding Program guidelines and authorized staff to issue the 2013 Regional Capacity Program call for projects. During the month of September, training sessions were held to assist local agencies in preparing and submitting project funding applications. Also during September, one-on-one local agency workshops were held to discuss specific project issues and additional application preparation support. Applications are due October 26, 2012, with the final funding recommendations expected to be approved by the Board in the second quarter of 2013.
- As part of the regularly scheduled M2 Performance Assessment, meetings are underway with the consultant team and OCTA to provide information to assist with the assessment of OCTA's performance on M2 for the time period of July 1, 2009 through June 30, 2012. The consultant team conducted 17 interviews during the month of September with OCTA's executive team members and key members of staff as it relates to the delivery and implementation of M2. The consultant team plans to conduct external interviews during the month of October and will continue to seek additional information to assist with the overall assessment.

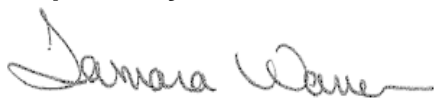
Summary

As required by M2 Ordinance No. 3, a quarterly report covering activities from July 2012 through September 2012 is provided to update progress in implementing the M2 Transportation Investment Plan. The above information and the attached details indicate significant progress on the overall M2 CAP. To be cost effective and to facilitate accessibility and transparency of information available to stakeholders and the public, the M2 progress report is presented on the OCTA website. Hard copies are available by mail upon request.

Attachment

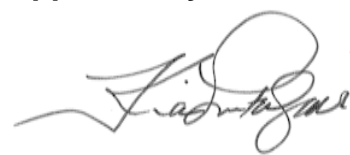
- A. Measure M2 Quarterly Progress Report – July Through September 2012

Prepared by:



Tamara Warren
Manager, Program Management Office
(714) 560-5590

Approved by:



Kia Mortazavi
Executive Director, Planning
(714) 560-5741



Robert Nathan
Senior Public Information Specialist
(714) 560-5327



ORANGE COUNTY TRANSPORTATION AUTHORITY

**Measure M2 Progress Report for July 2012 Through
September 2012**

Attachment A



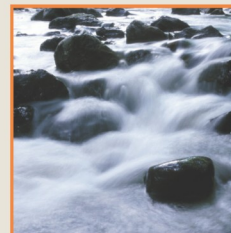
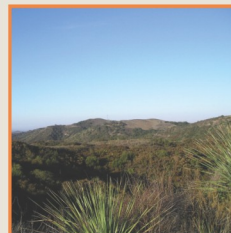
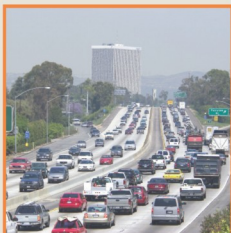
Highlights of the first
quarter activities include:

Freeway Projects
Streets and Roads
Environmental Cleanup and Water Quality
Freeway Mitigation Program
Finance Matters
Program Management Office
Summary

Measure M2

Progress Report

First Quarter of Fiscal Year 2012-13
July 1, 2012 through September 30, 2012



Measure M2

Progress Report



PROGRESS REPORT

SUMMARY

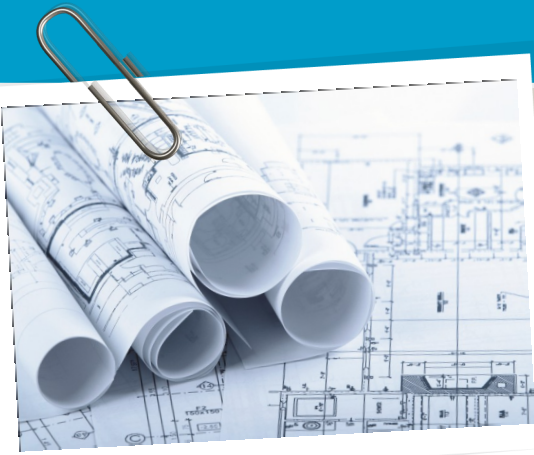


As required by the Measure M (M2) Ordinance No. 3, a quarterly report covering activities from July 1, 2012 through September 30, 2012 is provided to update progress in implementing the M2 Transportation Investment Plan.

To be cost effective and to facilitate accessibility and transparency of information available to stakeholders and the public, the M2 progress report is presented on the OCTA website. Hard copies are mailed upon request.

Measure M2

Progress Report



Section	Project	Page
Freeway Program (Projects A-N)		1
Interstate 5 (I-5) Projects	{A — D}	1
State Route 22 (SR-22) Project	{E}	3
State Route 55 (SR-55) Projects	{F}	3
State Route 57 (SR-57) Projects	{G}	4
State Route 91 (SR-91) Projects	{H — J}	5
Interstate 405 (I-405) Projects	{K — L}	7
Interstate 605 (I-605) Projects	{M}	8
Freeway Service Patrol	{N}	8
Streets and Roads (Projects O, P and Q)		9
Regional Capacity Program	{O}	9
Regional Traffic Signal Synchronization	{P}	11
Local Fair Share Program	{Q}	11
Transit Programs (Projects R, S, T, U, V and W)		13
High Frequency Metrolink Service	{R}	13
Transit Extensions to Metrolink	{S}	13
Regional Gateways for High-Speed Rail	{T}	15
Expand Mobility Choices for Seniors and Persons with Disabilities	{U}	15
Community Based Transit / Circulators	{V}	16
Safe Transit Stops	{W}	17
Environmental (Project X and Freeway Mitigation Program)		19
Environmental Cleanup	{X}	19
Freeway Mitigation Program (part of Projects A — M)		19
Program Management Office		21
M2 Financing and Schedule of Funding		23
M2 Local Funding by Agency		31
Capital Action Status		33

Measure M2

Progress Report



M2020 Projects

Environmental



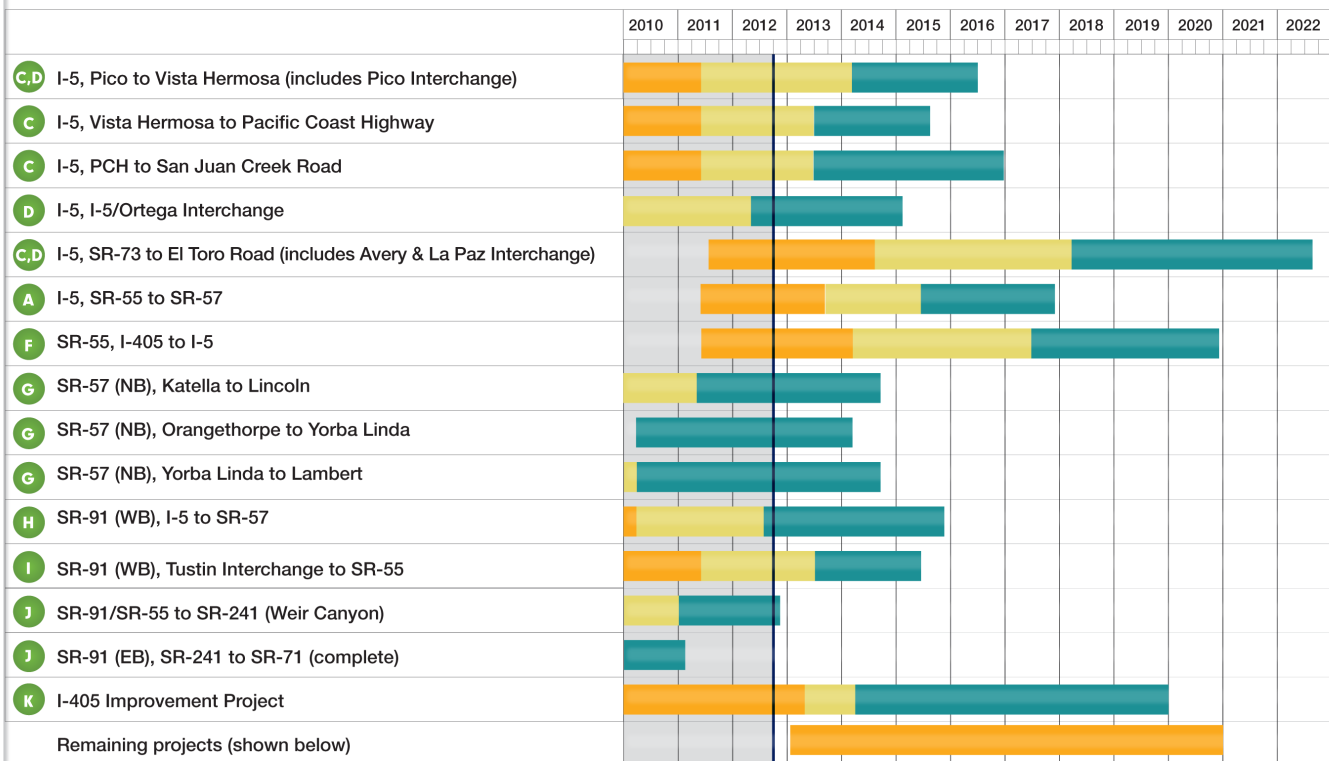
Design/Right of Way



Construction



M2020 Freeway Projects Through Construction



M2020 Freeway Projects Through Environmental Phase

- B** I-5 Widening (SR-55 to I-405)
- D** I-5 / El Toro Road Interchange Improvements
- F** SR-55 Widening (I-5 to SR-22)
- G** SR-57 NB Widening (Orangewood Avenue to Katella Avenue)
- G** SR-57 NB Widening (Lambert Road to County Line)

- I** SR-91 Widening (SR-57 to SR-55)
- J** SR-91 Widening (SR-241 to I-15)*
- L** I-405 Widening (SR-55 to I-5)
- M** I-605 / Katella Ave. Interchange Improvements

* Project environmentally cleared as part of the Riverside County Transportation Commission's Corridor Improvement Project.

Measure M2

Progress Report



FREEWAY PROJECTS

Interstate 5 (I-5) Projects

PROJECT A

I-5 Between State Route 55 (SR-55) and State Route 57 (SR-57)

Status: Environmental Study Under Way

Contact: Rose Casey, Capital Projects
(714) 560-5729

Summary: This quarter, the Orange County Transportation Authority (OCTA) continued conducting an environmental study to add lanes to the I-5 between the SR-55 and the SR-57 in Santa Ana. The study will evaluate options to add capacity to the existing high-occupancy vehicle lanes and improve traffic circulation within the I-5/SR-55 interchange. The study is expected to be completed in late 2013.

PROJECT B

I-5 Between State Route 55 (SR-55) and El Toro "Y"

Status: Project Study Report (PSR) approved

Contact: Rose Casey, Capital Projects
(714) 560-5729

Summary: Project B would improve traffic flow and operations along the I-5 within the cities of Irvine and Tustin. Staff are currently evaluating available funding as part of M2020 plan to advance the project through the environmental phase.

PROJECT C & PART OF PROJECT D

I-5 Between State Route 73 (SR-73) and El Toro Road and
I-5 Between Avenida Pico and San Juan Creek Road

Status: I-5 (State Route 73 (SR-73) and El Toro Road) Segment –
Environmental Study Under Way

Contact: Rose Casey, Capital Projects
(714) 560-5729

Summary: An environmental study continued during the quarter for improvements along the I-5 between the SR-73 and El Toro Road in the cities of Lake Forest, Laguna Hills, and Mission Viejo. The study evaluates lane additions and interchange improvements to improve traffic flow through this area. These improvements include reconstruction of the La Paz Road and Avery Parkway interchanges (part of Project D). The study is expected to be completed in mid-2014.

Measure M2

Progress Report



Status: I-5 (Avenida Pico and San Juan Creek Road) Segment – Final Design Under Way

Contact: Rose Casey, Capital Projects
(714) 560-5729

Summary: OCTA continues final design during the quarter for improvements along the I-5 between Avenida Pico and San Juan Creek Road in the cities of San Clemente, Dana Point, and San Juan Capistrano. The project will widen I-5 to add an HOV lane in each direction and includes major interchange improvements to Avenida Pico (part of Project D). Final design is expected to be completed by early 2013 to mid-2014.

PROJECT D

I-5 / El Toro Road and I-5 / Ortega Highway Interchanges

Status: I-5 / El Toro Road Interchange – Project Study Report (PSR) Under Way

Contact: Charlie Larwood, Planning
(714) 560-5683

Summary: This quarter, the consultant team began the preparation of the draft PSR document. The project study team is awaiting the final alignment from the I-5 Widening Project (Project C) to finalize the draft PSR. The study is expected to be completed in early 2013.

Status: I-5 / Ortega Highway Interchange – Construction to Start Soon

Contact: Rose Casey, Capital Projects
(714) 560-5729

Summary: The California Department of Transportation (Caltrans) approved the construction contract on September 18, 2012 for the reconstruction of the interchange at SR-74 in San Juan Capistrano during the quarter. The project will reconstruct the SR-74 bridge over the freeway and improve local traffic flow along the SR-74 and Del Obispo Street, adjacent to the freeway. Construction is expected to start in October 2012.

Measure M2

Progress Report



State Route 22 (SR-22) Project

PROJECT E

SR-22 Access Improvements



Status: SR-22 Interchanges at Brookhurst Street, Euclid Street and Harbor Boulevard – **Project Complete**

Contact: Rose Casey, Capital Projects
(714) 560-5729

Summary: Completed in 2007, Project E added improvements at key SR-22 interchanges to reduce freeway and street congestion in the area. The project was completed early as part of a “bonus project” provided by the original Measure M.

State Route 55 (SR-55) Projects

PROJECT F

SR-55 Between Interstate 405 (I-405) and State Route 91 (SR-91)

Status: SR-55 (I-405 to I-5) Segment – Environmental Study Under Way

Contact: Rose Casey, Capital Projects
(714) 560-5729

Summary: OCTA continued the environmental study to increase capacity on SR-55 in the cities of Irvine, Santa Ana, and Tustin. The study will evaluate the addition of general purpose lanes, carpool lanes, and auxiliary lanes. The study is expected to be completed in early 2014.

Status: SR-55 (I-5 to SR-91) Segment – Project Study Report Under Way

Contact: Charlie Larwood, Planning
(714) 560-5683

Summary: OCTA initiated a Project Study Report / Project Development Study (PSR/PDS) and began collecting data to improve operations and add capacity between the I-5 and State Route 22 (SR-22), and provide operational improvements between SR-22 and SR-91, in the cities of Orange, Santa Ana, Tustin, and Anaheim. The study is anticipated to be complete in fall of 2013.

Measure M2

Progress Report



State Route 57 (SR-57) Projects

PROJECT G

State Route 57 (SR-57) Improvements between Orangethorpe to Lambert, Katella to Lincoln, and Orangewood to Katella.

Status: SR-57 Northbound– Construction Under Way

Contact: Ryan Romeos, Outreach
(714) 560-5787

Summary: Construction is underway on three segments of the SR-57 freeway to add a new northbound general purpose lane through the cities of Anaheim, Brea, Fullerton, and Placentia. Caltrans is overseeing construction which continued during the quarter.

SR-57 Northbound, Katella Avenue to Lincoln Avenue: Construction progress is approximately 20 percent complete and the project is expected to be completed by the spring of 2014.

SR-57 Northbound, Orangethorpe Ave to Yorba Linda Blvd: Construction progress is approximately 55 percent complete and the project is expected to be completed in the fall of 2013.

SR-57 Northbound, Yorba Linda Blvd to Lambert Road: Construction progress is approximately 60 percent complete and the project is expected to be completed in early 2014.

Status: SR-57 Northbound from Orangewood Avenue to Katella Avenue – Project Study Report (PSR) Under Way

Contact: Charlie Larwood, Planning
(714) 560-5683

Summary: OCTA initiated a PSR/PDS to add capacity in the northbound direction of the SR-57 in the cities of Anaheim and Orange. This quarter, OCTA conducted an initial kickoff meeting, met with study stakeholders, and initiated data collection efforts to support the PSR/PDS. The study is anticipated to be complete in approximately 18 months in early 2014.

Measure M2

Progress Report



State Route 91 (SR-91) Projects

PROJECT H

SR-91 Between SR-57 and I-5

Status: Construction to Start Soon

Contact: Rose Casey, Capital Projects
(714) 560-5729

Summary: The project will add a new westbound general purpose lane through the cities of Anaheim and Fullerton. OCTA and Caltrans approved the final design and the project will be advertised in October 2012 for construction. Construction will begin in late 2012/early 2013, and OCTA and Caltrans will conduct pre-construction public outreach.

PROJECT I

SR-91 Between SR-57 and SR-55

Status: SR-91 Between SR-55 and Tustin Avenue Interchange —
Final Design and Right-of-Way Activities in Progress

Contact: Rose Casey, Capital Projects
(714) 560-5729

Summary: Caltrans is finalizing the design to improve traffic flow at the SR-55/SR-91 interchange. Caltrans right-of-way staff is proceeding with temporary construction easement acquisition efforts for 19 parcels. Both final design and right-of-way phases are expected to conclude in early 2013 with construction advertised and awarded in mid 2014.

Status: SR-91 Between SR-57 to SR-55 — PSR in Progress

Contact: Rose Casey, Capital Projects
(714) 560-5729

Summary: The project adds an additional eastbound lane from SR-57 to the SR-55. The project will improve freeway-to-freeway interchange operations between the SR-91/SR-57 and SR-91/SR-55. The project will reduce congestion and delay in the area. The PSR is expected to be complete in early 2013.

Measure M2

Progress Report



PROJECT J

SR-91, Between Interstate 5 (I-5) and Riverside County Line

Status: SR-91, Between State Route 241 (SR-241) and State Route 71 (SR-71) – **Project Complete**



Summary: This completed project added six miles of an additional EB lane to the SR-91 a key stretch of the SR-91 between the SR-241 and SR-71 in Riverside County. The project improves mobility and operations by reducing traffic weaving from traffic exiting at the SR-71 and Green River Road. Because this project was shovel-ready, OCTA was able to obtain American Recovery and Reinvestment Act (ARRA) funding for this M2 project – saving M2 revenues for future projects. Construction on this segment was completed in January 2011.

Contact: Rose Casey, Capital Projects
(714) 560-5729

Status: SR-91, Between SR-55 and State Route 241 (SR-241) – Construction Under Way

Contact: Fernando Chavarria, Outreach
(714) 560-5306

Summary: The project will add a new westbound and eastbound general purpose lane through the cities of Yorba Linda and Anaheim Hills. Caltrans is overseeing construction which continued during the quarter. Construction progress is approximately 85 percent complete and the project is expected to be complete in early 2013.

Status: SR-91, Between SR-241 and Interstate 15 – Environmental Study Under Way

Contact: Rose Casey, Capital Projects
(714) 560-5729

Summary: OCTA continued working with the Riverside County Transportation Commission (RCTC) to extend the 91 Express Lanes eastward from its current terminus in the city of Anaheim to Interstate 15 (I-15) in Riverside County during the quarter. This project will also add one general purpose lane in each direction from the SR-241 to the I-15. With the project's draft environmental document in circulation, the environmental review process is expected to wrap-up in late 2012, and RCTC is scheduled to issue a request for proposals to procure a design-build contractor by the end of 2012.

The portion between the SR-241 and the Orange County/Riverside County line is also part of Project J, while the matching segment between the county line and the SR-71 is part of RCTC's

Measure M2

Progress Report



Measure A. With RCTC's focus on extending the 91 Express Lanes, construction of the general purpose lane will take place post-2025. Accordingly, the matching general purpose lane improvements on the Orange County side are being scheduled to ensure coordinated delivery of the projects and to provide a continuous segment that stretches from the SR-241 to the SR-71. This action is consistent with the 2012 SR-91 Implementation Plan.

Interstate 405 (I-405) Projects

PROJECT K

I-405, Between SR-55 and Interstate 605

Status: Draft Environmental Impact Statement/Draft Environmental Impact Report (EIS/EIR) Released

Contact: Rose Casey, Capital Projects
(714) 560-5729

Summary: OCTA is preparing an environmental study to widen the I-405 through the cities of Costa Mesa, Fountain Valley, Garden Grove, Huntington Beach, Los Alamitos, Seal Beach, and Westminster. The Board has had a number of discussions regarding the best widening approach and is scheduled to select the Locally Preferred Alternative on October 22. These improvements will add mainline capacity and improve the local interchanges along the corridor. The final environmental document is expected to be complete in summer 2013.

PROJECT L

I-405 Between SR-55 and the El Toro "Y"

Status: Project Study Report (PSR) Under Way

Contact: Charlie Larwood, Planning
(714) 560-5683

Summary: This quarter, staff began the preparation of the technical studies as well as the draft PSR document. The draft study is under way and is expected to be completed in early 2013.

Measure M2

Progress Report



Interstate 605 (I-605) Projects

PROJECT M

I-605 Interchange Improvements

Status: Preliminary Engineering Starting Soon

Contact: Charlie Larwood, Planning
(714) 560-5683

Summary: This project will improve freeway access and arterial connection to I-605 at Katella Avenue in the City of Los Alamitos and County of Orange. Planned improvements may include enhancements at the on/off ramps and operational improvements on Katella Avenue at the I-605 interchange. Preliminary engineering is expected to begin June 2013.

PROJECT N

Freeway Service Patrol

Summary: Freeway Service Patrol (FSP) funded by M2 began operation June 2012. During the quarter, the new midday service provided assistance to 534 motorists and new weekend service provided assistance to 508 motorists. The amendment to the agreement with the California Highway Patrol (CHP) to add a dedicated FSP public safety dispatcher was executed in September. CHP is now recruiting for the position and anticipates filling the position before the end of the year.

Contact: Sue Zuhlke, Motorist Svcs.
(714) 560-5574

Measure M2

Progress Report



STREETS & ROADS



PROJECT O

Regional Capacity Program

Status: Regional Capacity Program – Call for Projects Under Way

Contact: Roger Lopez, Planning
(714) 560-5438

Summary: On August 13, 2012, the Board approved updates to the Comprehensive Transportation Funding Programs guidelines and authorized staff to issue the 2013 Regional Capacity Program call for projects. During the month of September, training sessions were held to assist local agencies in preparing and submitting project funding applications. Also during September, one-on-one local agency workshops were held to discuss specific project issues and additional application preparation support. Applications are due October 26, 2012, with the final funding recommendations expected to be approved by the Board in the second quarter of 2013.

Status: Raymond Grade Separation – Design Nearing Completion

Contact: Rose Casey, Capital Projects
(714) 560-5729

Summary: The project located at Raymond Avenue Railroad (RR) crossing will grade separate the local street from railroad tracks in the City of Fullerton by taking vehicular traffic under the railroad crossing. On August 13, the Board approved an amendment to the Cooperative Agreement with the City of Fullerton (City) making OCTA the lead agency for property acquisition and tenant relocation. This right-of-way lead agency change was made as a result of a request made by the City of Fullerton. The City has been finalizing the project plans, specifications, and estimate (PS&E) during the quarter. The City will release the advertisement for construction by fall of 2013. Construction is anticipated to begin by late 2013 and is expected to be completed by mid-2016.

Status: State College Grade Separation – Design Nearing Completion

Contact: Rose Casey, Capital Projects
(714) 560-5729

Summary: The project located at State College Boulevard RR crossing will separate the local street from railroad tracks in the City of Fullerton (City) by taking vehicular traffic under the railroad crossing. On August 13, the Board approved an amendment to the Cooperative Agreement with the City of Fullerton making OCTA the lead agency for property acquisition and tenant relocation. This right-of-way lead agency change was made as a result of a request made by the City. City staff has been finalizing the project plans, specifications, and estimate (PS&E) during the quarter. The City will release the advertisement for construction by fall of 2013. Construction is anticipated to begin by late 2013 and expected to be completed by mid-2016.

Measure M2

Progress Report



Status: Placentia Grade Separation – Construction Under Way

Contact: Tresa Oliveri, Outreach
(714) 560-5374

Summary: The project located at Placentia Avenue RR crossing will separate the local street from railroad tracks in the City of Placentia by taking vehicular traffic under the railroad crossing. OCTA is overseeing construction, which continued during the quarter. Construction is approximately 30 percent complete and the project is expected to be completed by late 2014.

Status: Kraemer Grade Separation – Construction Under Way

Contact: Tresa Oliveri, Outreach
(714) 560-5374

Summary: The project located at Kraemer Boulevard RR crossing will grade separate the local street from railroad tracks in the City of Placentia. OCTA is overseeing construction which continued during the quarter. Construction progress is approximately 30 percent complete and the project is expected to be completed by late 2014.

Status: Tustin / Rose Grade Separation – Design Completion

Contact: Rose Casey, Capital Projects
(714) 560-5729

Summary: The project located at Tustin Avenue/Rose Drive RR crossing will grade separate the local street from railroad tracks in the Cities of Placentia and Anaheim by building a bridge for vehicular traffic over the railroad crossing. OCTA will release the advertisement for construction in October 2012. Construction is anticipated to begin by summer 2013 and expected to be completed by early 2016.

Status: Lakeview Grade Separation – Design Nearing Completion

Contact: Rose Casey, Capital Projects
(714) 560-5729

Summary: The project located at Lakeview Avenue RR crossing will grade separate the local street from railroad tracks in the Cities of Anaheim and Placentia. OCTA staff has been finalizing the project plans, specifications, and estimate during the quarter. OCTA will release the advertisement for construction by spring 2013. Construction is anticipated to begin by fall 2013 and expected to be completed by late 2015. In addition, OCTA released a request for proposal seeking qualified firms for construction management services on July 23, 2012.

Status: Orangethorpe Grade Separation – Advertised for Construction

Contact: Rose Casey, Capital Projects
(714) 560-5729

Summary: The project located at Orangethorpe Avenue RR crossing will grade separate the local street



from railroad tracks in the Cities of Placentia and Anaheim by building a bridge for vehicular traffic over the railroad tracks. OCTA released the advertisement for construction on September 12, 2012. Construction is anticipated to begin by summer of 2013 and expected to be completed by mid-2016.

PROJECT P

M2 Regional Traffic Signal Synchronization Program

Status: Construction Under Way

Contact: Ron Keith, Planning
(714) 560-5990

Summary: OCTA awarded all of the projects applied for in FY 2012–2013 in April 2012. The local agencies and the County of Orange participated with 24 projects totaling \$9,696,236.00. These projects cover 141 miles with 533 intersections. All participants are implementing their respective projects and results are expected starting in January 2013. OCTA was designated to act as lead agency for seven of these projects that began in July 2012 with results expected in July 2013. A new FY 2013-14 call for projects was released on August 13, 2012, with proposals due October 26, 2012.

PROJECT Q

Local Fair Share Program

Summary: All local agencies have been found eligible to receive M2 Local Fair Share funds. On a bi-monthly basis, 18 percent of net revenues are allocated to local agencies by formula. To date, approximately \$50.8 million in Local Fair Share payments have been provided to local agencies as of the end of the quarter.

See page 27 for funding allocation by local agency.

Contact: Andy Oftelie, Finance
(714) 560-5649



TRANSIT PROGRAMS

PROJECT R

High Frequency Metrolink Service



Status: Metrolink Grade Crossing Improvements – **Project Complete**

Summary: Enhancement of the designated 52 Orange County at-grade rail-highway crossings was completed as part of the Metrolink Expanded Service Program. Completion of the safety improvements provides each corridor city with the opportunity to establish a “quiet zone” at their respective crossings. Quiet zones are intended to prohibit the sounding of train horns through designated crossings, except in the case of emergencies, construction work, or safety concerns identified by the train engineer. The cities of Anaheim, Orange, Santa Ana, Irvine and San Clemente have established quiet zones within their communities.

Contact: Dinah Mineer, Rail
(714) 560-5740

Status: Sand Canyon Grade Separation – Construction Under Way

Contact: Dinah Mineer, Rail
(714) 560-5740

Summary: The project located at Sand Canyon Avenue RR crossing will separate the local street from railroad tracks in the City of Irvine by building an underpass for vehicular traffic. OCTA is overseeing construction, which continued during the quarter. Construction is approximately 40 percent complete and the project is expected to be completed by mid-2014.

PROJECT S

Transit Extensions to Metrolink

Summary: Metrolink Commuter Rail service provides a high-capacity system that links Orange County, with two-thirds of the county’s population within a four-mile radius of a station. Project S establishes a competitive program for local jurisdictions to extend the benefits of rail service by improving transit connectivity to Metrolink stations.

Status: Anaheim Rapid Connection (ARC) Project – Alternatives Analysis (AA) nearing completion

Contact: Kelly Hart, Rail
(714) 560-5725

Summary: The City of Anaheim is nearing completion of the ARC project’s AA report. The AA report evaluates how the No-Build, Enhanced Bus, Streetcar and Elevated Fixed-Guideway

Measure M2

Progress Report



alternatives meet the goals and objectives of the ARC study corridor. An overview of the AA process was presented at a community meeting in September. In addition to the AA report, the City completed an Engineering Feasibility Report, preliminary capital cost estimates, and ridership analysis during the reporting period. The City plans to present the AA report findings to the Anaheim City Council in early October for a selection of a locally preferred alternative (LPA) to carry forward into the environmental clearance process. The locally preferred alternative (LPA) will also be presented by city staff to the OCTA Board in November.

Status: Santa Ana / Garden Grove Project – Alternatives Analysis (AA), Draft Environmental Impact Report, and Draft Environmental Assessment nearing completion

Contact: Kelly Hart, Rail
(714) 560-5725

Summary: The Santa Ana/Garden Grove Project Team completed the project's draft AA and submitted the document to FTA for review and is nearing completion of the project's Draft Environmental Assessment (EA)/EIR. The combined AA/EIR/EA report will be used to seek stakeholder and public input for the selection of a LPA. The project team conducted several meetings with the Federal Transit Administration (FTA) to discuss key project issues including the disposition of the historic Santa Ana River Bridge, which is located along the project's alignment. The City also developed preliminary capital cost estimates for the project alternatives.

Status: Bus and Station Van Extension Projects – Cooperative Agreements in Process

Contact: Abbe McClenahan, Planning
(714) 560-5673

Summary: The Board approved a call for projects for Project S and it was issued on February 27, 2012. Four applications were received on April 26, 2012, and were evaluated using the Board-approved criteria. The applications were approved by the TAC on June 27, 2012, and by the Board on July 23, 2012. The cooperative agreements are in process and services are expected to begin in December.

Measure M2

Progress Report



PROJECT T

Convert Metrolink Stations to Regional Gateways that Connect Orange County with High-Speed Rail Systems

Summary: The City of Anaheim continues moving forward on the Anaheim Regional Transportation Intermodal Center (ARTIC). On July 9, the Board approved the sale of approximately 13.5 acres of real property to the City. On August 2, the City of Anaheim (City) received eight bids for the construction of ARTIC. On September 11, the City awarded the construction contract to Clark Construction Group (Clark) in the amount of \$126,997,000. A groundbreaking ceremony was held on September 18. The City issued a Notice to Proceed to Clark on September 24. Demolition work is scheduled to begin in mid-October.

Contact: Dinah Mineer, Rail
(714) 560-5740

PROJECT U

Expand Mobility Choices for Seniors and Persons with Disabilities

Status: Senior Mobility Program – Distributing Funds to City Agencies

Contact: Dana Wiemiller, ACCESS
(714) 560-5718

Summary: More than \$322,463 in M2 Project U funding was disbursed to 25 cities participating in the Senior Mobility Program (SMP) during the quarter. Collectively, the cities provided approximately 71,000 trips this quarter for seniors traveling to medical appointments, nutrition programs, shopping destinations, and senior and community center activities. In addition, nearly \$386,000 was disbursed during the quarter to the County of Orange to support the Office on Aging Senior Non-Emergency Medical Transportation Program.

Measure M2

Progress Report



Status: Fare Stabilization Program – In Progress

Contact: Andy Oftelie, Finance
(714) 560-5649

Summary: To stabilize fares for seniors and persons with disabilities, one percent of net revenues are dedicated for this purpose. To date, \$2.8 million has been allocated to stabilize fares for seniors and persons with disabilities. The M2 Ordinance requires that funds be allocated “in an amount equal to the percentage of partial funding of fares for seniors and persons with disabilities as of the effective date of the Ordinance.” As projected revenues declined due to the recession, there was a concern that one percent of net revenues would not be sufficient to meet the Ordinance requirements. When the Board approved the Project U guidelines, the Board authorized that any revenues generated by the SMP not claimed by the cities could be used for the Fare Stabilization Program. Since there are nine local agencies that do not participate in the SMP, \$0.5 million is available to be transferred from the SMP to the Fare Stabilization Program.

In December 2011, staff provided the Board with a financial analysis that showed that the Fare Stabilization Program funding levels are sufficient until fiscal year (FY) 2034-35. Staff will return to the Finance and Administration Committee in December 2012 with a financial update for the Fare Stabilization Program.

PROJECT V

Community Based Transit / Circulators

Status: Developing Program Guidelines

Contact: Abbe McClenahan, Planning
(714) 560-5673

Summary: During the quarter, OCTA was in the process of guideline development for community based transit programs. The framework for the guidelines was discussed with the Executive and Technical Steering committees and a task force of Technical Advisory Committee (TAC) members was convened to discuss elements of the framework for development of the guidelines. The draft guidelines were presented to the TAC in late September, and will be presented to the Technical Steering Committee in early October and the Executive Committee and the Board in November.



PROJECT W

Safe Transit Stops

Summary: During the quarter, staff identified a variety of improvements that can be made to enhance transit stops. Staff will focus on conducting a cost benefit analysis for any improvements that require ongoing operation and maintenance costs, developing guidelines to implement the program in conformance with Federal Title VI Regulations, preparing a schedule for implementation of selected enhancements over the next two years, and developing a sustainable financial plan to ensure enhancements can be maintained throughout the life of the program and into the future. Draft guidelines have been developed outlining the process for project funding and criteria. The proposed guidelines will be brought to the Board for consideration in the following quarter.

Contact: Scott Holmes, Transit
(714) 560-5710

Measure M2

Progress Report



ENVIRONMENTAL

PROJECT X

Environmental Cleanup

Summary: The M2 Allocation Committee is charged with making recommendations to the Board on the allocation of funds for the environmental cleanup program (Project X). These funds are allocated on a countywide competitive basis to assist jurisdictions in meeting the Clean Water Act standards for controlling transportation-related pollution. Project X is composed of a two-tiered funding process focusing on early priorities (Tier 1), and to prepare for more comprehensive capital investments (Tier 2).

In August 2012, the Board authorized funding of 33 projects totaling \$2.76 million to 25 cities plus the County of Orange for the second Tier 1 call for projects. To date, 67 projects totaling over \$5.5 million have been allocated for two Tier 1 call for projects.

The Tier 2 Grant Program Planning Study, which evaluated the best Tier 2 candidate sites for funding regional capital projects, was completed in May. The first Tier 2 call for projects was subsequently issued on June 4, 2012 and concluded on September 4, 2012. OCTA received 12 applications from ten cities. Staff is currently evaluating these projects and anticipates Board action in early 2013.

Contact: Dan Phu, Planning
(714) 560-5907

PART OF PROJECTS (A-M)

Freeway Mitigation Program

Summary: The Freeway Mitigation Program provides higher-value environmental benefits such as habitat protection, wildlife corridors, and resource preservation in exchange for streamlined project approvals and greater certainty in the delivery of the 13 M2 freeway projects.

Contact: Dan Phu, Planning
(714) 560-5907

Restoration Update

On May 14, 2012, the Board approved the Environmental Mitigation Program Revised Restoration Funding Guidelines and six restoration projects for funding consideration. The Board also authorized staff to issue a revised call for projects for remaining funds (approximately \$400,000) from Round 2 with a focus on watersheds affected by early action M2 freeway projects, specifically Bolsa Chica Channel-Frontal Huntington Harbor, Lower Santa

Measure M2

Progress Report



Ana River, San Diego Creek, and San Juan Creek.

The six funded restoration projects totaled \$4.7 million and included Aliso Creek, Chino Hills State Park, Harriett Weider Regional Park, Lower Silverado Canyon, North Coal Canyon, and West Loma.

In this quarter, staff continues to work with the Army Corps of Engineers, along with the Calif. Department of Fish & Game and the U.S. Fish and Wildlife Service, to achieve consensus on the restoration plans. Once there is consensus on the restoration plans, Staff will proceed to execute contracts with various project sponsors.

Acquisition Update

As of the quarter, OCTA has acquired approximately 950 acres of open space property in the Trabuco Canyon area and in Brea. From the original \$42 million allocated for the purchase of open space, approximately \$8.5 million (inclusive of the long-term management cost) remains for additional acquisitions, and the funds are expected to be allocated within the next several months. After updating appraisals of the remaining Group 1 (high biological value) properties, staff will engage the Environmental Oversight Committee in determining which properties should receive offers using the remaining funds. Staff is currently finalizing an offer for an additional property, which should be announced by the following quarter.



PROGRAM MGMT

PROGRAM MANAGEMENT OFFICE

Summary: The M2 Program Management Office (PMO) provides interdivisional coordination. A committee made up of executive directors and key staff from each of the divisions meets every two weeks to review key issues and activities within the Measure M Program.

In the third quarter, the focus of the PMO has been on several key items. These include:

Contact: Tami Warren, PMO
(714) 560-5590

M2020 Plan Development

Staff continued to define and develop the M2020 Plan through additional analysis on all proposals for M2 elements. A draft plan was presented to the Board on August 27 and the final plan was presented and approved by the Board on September 10, 2012. The M2020 Plan implementing actions which included directing staff to initiate the amendment process to the M2 Transportation Investment Plan and to develop a plan of finance was approved by the Board on September 24. The first step of the implementing actions is to seek the Taxpayers Oversight Committees (TOC) approval of the amendment. The TOC heard the proposed amendment at their September 27 special meeting and voted unanimously to support the amendment. The TOC will be asked to reaffirm their vote at their regular meeting on October 9. Step two of the implementing actions is to develop a plan of finance for the M2 projects. Staff is currently working on the plan of finance and anticipates bringing the plan to the Board in November.

2009-12 M2 Performance Assessment

Meetings are under way with CH2M Hill and OCTA continues to provide information to assist with the assessment of OCTA's performance on M2 for the time period of July 1, 2009 through June 30, 2012. The consultant team conducted 17 interviews during the month of September with OCTA's executive team members and key members of staff as they relate to the delivery and implementation of M2. The consultant team plans to conduct external interviews during the month of October and will continue to seek additional information to assist with their overall assessment.



Measure M2

Progress Report



M2 Document Management

The M2 Document Center site is designed to provide a unified approach to saving Measure M project and program files. Staff training was completed this quarter and the document center is up and running. Recommendations from users on minor adjustments to the center are under way and should be in place during the month of October.

Documents in the M drive (the previous system for saving M documents) have been transferred to the document center and are currently being categorized by staff. The plan is to have all 1,128 of the files permanently stored with the appropriate identifying metadata in the document center by the end of the year.

M2 Administrative Cost Safeguards

Staff meets quarterly to review all labor costs to ensure proper cost allocation to both M1 and M2. As a result of this review, the allocation methodology has been updated to more accurately reflect actual time spent on both M1 and M2 administrative activities. As M1 continues to wind down, staff will look at other refinements that should be incorporated into the cost allocation plan for FY 2012-13.

Key Upcoming Activities

During the next quarter, staff will redesign the quarterly report to include a section measuring progress on the M2020 Plan. Staff will continue to work with CH2M Hill on the performance assessment and complete the migration of documents from the M drive to the M2 Document Center.



FINANCE MATTERS

M2 FINANCING

Summary: Sales tax receipts are above the amount assumed for the current budget. Sales tax receipts from the State Board of Equalization for the period increased 7.6 percent from the same period last year, which is 1.3 percent higher than the budget assumption. It is estimated that given the final sales tax receipts for FY 2011-12, the first quarter sales tax receipts for FY 2012-13, coupled with the long-term sales tax growth rate forecasts, that the revenue forecast for the life of the M2 Program will be approximately \$15.3 billion.

Contact: Sean Murdock, Finance
(714) 560-5685

I-405 Improvement Project (Project K) Funding

In order to implement the M2020 Plan, staff defined the need to amend the M2 Transportation Investment Plan to address the funding shortfall on Project K, Interstate 405 (I-405) between Interstate 605 and State Route 55. The M2020 Plan includes funding for the voter-approved project in M2 to add one general purpose lane in each direction.

The original cost of Project K included in the M2 Transportation Investment Plan anticipated a total cost of \$600 million. As the project moved through the project development process and additional engineering was done the cost estimate increased. This was a result of a substantial increase in the cost of materials and changes in project scope such as the replacement of every bridge including overcrossing widening and ramp improvements in the 14 mile long project area. With the project more clearly defined, the project cost estimate is now \$1.3 billion.

To address the \$709 million need in escalated dollars on the I-405 (Project K), and as a result of capturing additional external funds and project cost savings on SR-91 (Project J), staff recommended that \$709 million, a portion of the \$847 million in savings currently allocated to Project J, be reallocated to Project K. The OCTA Board approved the M2020 plan on September 10, 2012. The amendment to the M2 Transportation Investment Plan was approved unanimously by the Taxpayer Oversight Committee on Sept. 27, 2012 and will be brought back to the TOC on Oct. 9, 2012 to reaffirm their vote. The proposed amendment will return to the OCTA Board for a public hearing and consideration on November 9, 2012.

Measure M2

Progress Report



Schedule 1

Measure M2

Schedule of Revenues, Expenditures and Changes in Fund Balance

as of September 30, 2012

(Unaudited)

(\$ in thousands)	Quarter Ended Sept 30, 2012	Year to Date Sept 30, 2012	Period from Inception to Sept 30, 2012
		(A)	(B)
Revenues:			
Sales taxes	\$ 64,283	\$ 64,283	\$ 377,537
Other agencies share of Measure M2 costs:			
Project related	6,850	6,850	65,814
Interest:			
Operating:			
Non-project related	537	537	1,021
Bond proceeds	3,767	3,767	13,111
Debt service	3	3	21
Commercial paper	-	-	393
Right-of-way leases	17	17	255
Total revenues	<u>75,457</u>	<u>75,457</u>	<u>458,152</u>
Expenditures:			
Supplies and services:			
State Board of Equalization (SBOE) fees	656	656	3,768
Professional services:			
Project related	3,728	3,728	132,631
Non-project related	145	145	5,884
Administration costs:			
Project related	1,196	1,196	13,918
Non-project related	1,642	1,642	20,091
Other:			
Project related	24	24	492
Non-project related	2	2	3,413
Payments to local agencies:			
Project related	15,862	15,862	152,972
Capital outlay:			
Project related	14,076	14,076	134,635
Non-project related	-	-	32
Debt service:			
Interest on long-term debt and commercial paper	11,228	11,228	38,425
Total expenditures	<u>48,559</u>	<u>48,559</u>	<u>506,261</u>
Excess (deficiency) of revenues over (under) expenditures	<u>26,898</u>	<u>26,898</u>	<u>(48,109)</u>
Other financing sources (uses):			
Transfers out: project related	(450)	(450)	(3,510)
Transfers in: project related	-	-	26,502
Bond proceeds	-	-	358,593
Total other financing sources (uses)	<u>(450)</u>	<u>(450)</u>	<u>381,585</u>
Excess (deficiency) of revenues over (under) expenditures and other sources (uses)	<u>\$ 26,448</u>	<u>\$ 26,448</u>	<u>\$ 333,476</u>

Measure M2

Progress Report



Schedule 2

Measure M2

Schedule of Calculations of Net Tax Revenues and Net Bond Revenues (Debt Service)

as of September 30, 2012

(Unaudited)

(\$ in thousands)	Quarter Ended Sept 30, 2012 (actual)	Year Ended Sept 30, 2012 (actual)	Period from Inception through Sept 30, 2012 (actual)	Period from October 1, 2012 through March 31, 2041 (forecast)	Total
		(C.1)	(D.1)	(E.1)	(F.1)
Tax revenues:					
Sales taxes	\$ 64,283	\$ 64,283	\$ 377,537	\$ 14,924,572	\$ 15,302,109
Operating interest	537	537	1,021	412,563	413,584
Total tax revenues	<u>64,820</u>	<u>64,820</u>	<u>378,558</u>	<u>15,337,135</u>	<u>15,715,693</u>
Administrative expenditures:					
SBOE fees	656	656	3,768	223,958	227,726
Professional services, non-project related	141	141	3,036	101,471	104,507
Administration costs, non-project related	1,642	1,642	20,091	142,530	162,621
Operating transfer out, non-project related	-	-	-	20,891	20,891
Other, non-project related	2	2	3,413	26,860	30,273
Capital outlay, non-project related	-	-	32	-	32
Environmental cleanup	143	143	2,126	306,743	308,869
	<u>2,584</u>	<u>2,584</u>	<u>32,466</u>	<u>822,453</u>	<u>854,919</u>
Net tax revenues	<u>\$ 62,236</u>	<u>\$ 62,236</u>	<u>\$ 346,092</u>	<u>\$ 14,514,683</u>	<u>\$ 14,860,775</u>
		(C.2)	(D.2)	(E.2)	(F.2)
Bond revenues:					
Proceeds from issuance of bonds	\$ -	\$ -	\$ 358,593	\$ 1,540,000	\$ 1,898,593
Interest revenue from bond proceeds	3,767	3,767	13,111	53,550	66,661
Interest revenue from debt service funds	3	3	21	36,096	36,117
Interest revenue from commercial paper	-	-	393	-	393
Total bond revenues	<u>3,770</u>	<u>3,770</u>	<u>372,118</u>	<u>1,629,646</u>	<u>2,001,764</u>
Financing expenditures and uses:					
Professional services, non-project related	4	4	2,848	-	2,848
Bond debt principal	-	-	-	1,092,570	1,092,570
Bond debt and other interest expense	11,228	11,228	38,425	987,385	1,025,810
Total financing expenditures and uses	<u>11,232</u>	<u>11,232</u>	<u>41,273</u>	<u>2,079,955</u>	<u>2,121,228</u>
Net bond revenues (debt service)	<u>\$ (7,462)</u>	<u>\$ (7,462)</u>	<u>\$ 330,845</u>	<u>\$ (450,309)</u>	<u>\$ (119,464)</u>

Measure M2

Progress Report



Schedule 3

Measure M2 Schedule of Revenues and Expenditures Summary as of September 30, 2012 (Unaudited)

Project	Description	Net Tax Revenues Program to date Actual	Total Net Tax Revenues	Project Budget	Estimate at Completion
	(G)	(H)	(I)	(J)	(K)
	(\$ in thousands)				
Freeways (43% of Net Tax Revenues)					
A	I-5 Santa Ana Freeway Interchange Improvements	\$ 13,641	\$ 585,739	\$ 585,653	\$ 585,653
B,C,D	I-5 Santa Ana/San Diego Freeway Improvements	34,398	1,477,007	1,453,157	1,453,157
E	SR-22 Garden Grove Freeway Access Improvements	3,483	149,550	149,550	149,550
F	SR-55 Costa Mesa Freeway Improvements	10,623	456,129	455,854	455,854
G	SR-57 Orange Freeway Improvements	7,510	322,453	319,815	319,815
H,I,J	SR-91 Riverside Freeway Improvements	42,998	1,846,292	1,845,073	1,845,073
K,L	I-405 San Diego Freeway Improvements	23,790	1,021,534	966,179	966,179
M	I-605 Freeway Access Improvements	580	24,925	24,925	24,925
N	All Freeway Service Patrol	4,354	186,938	186,938	186,938
	Freeway Mitigation	7,442	319,566	316,514	316,514
	Subtotal Projects	148,819	6,390,133	6,303,658	6,303,658
	Net (Bond Revenue)/Debt Service	-	-	86,475	86,475
	Total Freeways	\$ 148,819	\$ 6,390,133	\$ 6,390,133	\$ 6,390,133
	%				43.0%
Street and Roads Projects (32% of Net Tax Revenues)					
O	Regional Capacity Program	\$ 34,609	\$ 1,486,096	\$ 1,470,179	\$ 1,470,179
P	Regional Traffic Signal Synchronization Program	13,843	594,412	594,381	594,381
Q	Local Fair Share Program	62,297	2,674,939	2,674,939	2,674,939
	Subtotal Projects	110,749	4,755,447	4,739,499	4,739,499
	Net (Bond Revenue)/Debt Service	-	-	15,948	15,948
	Total Street and Roads Projects	\$ 110,749	\$ 4,755,447	\$ 4,755,447	\$ 4,755,447
	%				32.0%

Continues on following page

Measure M2

Progress Report



Measure M2

Schedule of Revenues and Expenditures Summary

as of September 30, 2012

(Unaudited)

Variance Total Net Tax Revenues to Est at Completion (L)	Variance Project Budget to Est at Completion (M)	Expenditures Quarter Ended Sept 30, 2012 (N)	Reimbursements Quarter Ended Sept 30, 2012 (O)	Expenditures through Sept 30, 2012 (N)	Reimbursements through Sept 30, 2012 (O)	Net Project Cost (P)	Percent of Budget Expended (Q)
\$ 86	\$ -	\$ 15	\$ -	\$ 1,131	\$ -	\$ 1,131	0.2%
23,850	-	2,191	2,224	26,479	2,260	24,219	1.7%
-	-	-	-	4	-	4	0.0%
275	-	161	13	3,040	13	3,027	0.7%
2,638	-	496	7	29,413	4,893	24,520	7.7%
1,219	-	247	20	17,490	5,329	12,161	0.7%
55,355	-	367	21	15,484	613	14,871	1.5%
-	-	1	-	1	-	1	0.0%
-	-	2	-	13	-	13	0.0%
3,052	-	131	1,336	29,167	1,336	27,831	8.8%
86,475	-	3,611	3,621	122,222	14,444	107,778	
(86,475)	-	2,813	-	11,341	-	11,341	
\$ -	\$ -	\$ 6,424	\$ 3,621	\$ 133,563	\$ 14,444	\$ 119,119	32.1%
\$ 15,917	\$ -	\$ 21,494	\$ 2,778	\$ 137,306	\$ 23,588	\$ 113,718	7.7%
31	-	192	272	924	272	652	0.1%
-	-	7,113	-	51,397	-	51,397	1.9%
15,948	-	28,799	3,050	189,627	23,860	165,767	
(15,948)	-	3,328	-	10,763	-	10,763	
\$ -	\$ -	\$ 32,127	\$ 3,050	\$ 200,390	\$ 23,860	\$ 176,530	47.5%

Measure M2

Progress Report



Schedule 3

Measure M2 Schedule of Revenues and Expenditures Summary as of September 30, 2012 (Unaudited)

Project	Description	Net Tax Revenues Program to date Actual	Total Net Tax Revenues	Project Budget	Estimate at Completion
(G)		(H)	(I)	(J)	(K)
	(\$ in thousands)				
Transit Projects (25% of Net Tax Revenues)					
R	High Frequency Metrolink Service	\$ 30,983	\$ 1,330,360	\$ 1,323,024	\$ 1,323,024
S	Transit Extensions to Metrolink	30,552	1,311,862	1,310,783	1,310,783
T	Metrolink Gateways	6,923	297,268	288,642	288,642
U	Expand Mobility Choices for Seniors and Persons with Disabilities	10,382	445,771	445,771	445,771
V	Community Based Transit/Circulators	6,920	297,137	297,137	297,137
W	Safe Transit Stops	764	32,797	32,797	32,797
	Subtotal Projects	86,524	3,715,195	3,698,154	3,698,154
	Net (Bond Revenue)/Debt Service	-	-	17,041	17,041
	Total Transit Projects	\$ 86,524	\$ 3,715,195	\$ 3,715,195	\$ 3,715,195
	%				25.0%
Measure M2 Program					
		\$ 346,092	\$ 14,860,775	\$ 14,860,775	\$ 14,860,775
Environmental Cleanup (2% of Revenues)					
X	Clean Up Highway and Street Runoff that Pollutes Beaches	\$ 7,571	\$ 314,314	\$ 314,314	\$ 314,314
	Total Environmental Cleanup	\$ 7,571	\$ 314,314	\$ 314,314	\$ 314,314
	%				2.0%
Taxpayer Safeguards and Audits					
	Collect Sales Taxes (1.5% of Sales Taxes)	\$ 5,663	\$ 229,532	\$ 229,532	\$ 229,532
	%				1.5%
	Oversight and Annual Audits (1% of Revenues)	\$ 3,786	\$ 157,157	\$ 157,157	\$ 157,157
	%				1.0%

Continues on following page

Measure M2

Progress Report



Measure M2

Schedule of Revenues and Expenditures Summary

as of September 30, 2012

(Unaudited)

Variance Total Net Tax Revenues to Est at Completion	Variance Project Budget to Est at Completion	Expenditures Quarter Ended Sept 30, 2012	Reimbursements Quarter Ended Sept 30, 2012	Expenditures through Sept 30, 2012	Reimbursements through Sept 30, 2012	Net Project Cost	Percent of Budget Expended
(L)	(M)	(N)	(O)	(N)	(O)	(P)	(Q)
\$ 7,336	\$ -	\$ 1,578	\$ -	\$ 115,281	\$ 53,951	\$ 61,330	4.6%
1,079	-	44	19	347	139	208	0.0%
8,626	-	-	-	5	-	5	0.0%
-	-	1,159	-	8,543	-	8,543	1.9%
-	-	2	-	2	-	2	0.0%
-	-	-	-	5	-	5	0.0%
17,041	-	2,783	19	124,183	54,090	70,093	
(17,041)	-	1,321	-	5,644	-	5,644	
\$ -	\$ -	\$ 4,104	\$ 19	\$ 129,827	\$ 54,090	\$ 75,737	
						20.4%	
\$ -	\$ -	\$ 42,655	\$ 6,690	\$ 463,780	\$ 92,394	\$ 371,386	
\$ -	\$ -	\$ 143	\$ 177	\$ 2,126	\$ 177	\$ 1,949	0.6%
\$ -	\$ -	\$ 143	\$ 177	\$ 2,126	\$ 177	\$ 1,949	
						0.5%	
\$ -	\$ -	\$ 656	\$ -	\$ 3,768	\$ -	\$ 3,768	1.6%
						1.0%	
\$ -	\$ -	\$ 781	\$ -	\$ 9,102	\$ 5,184	\$ 3,918	2.5%
						1.0%	

Measure M2

Progress Report



LOCAL FAIR SHARE

Entity	FY 2012-13 First Quarter M2 Funds	M2 Funds To Date
Aliso Viejo	\$86,691	\$640,376
Anaheim	\$749,254	\$5,360,739
Brea	\$125,574	\$923,971
Buena Park	\$203,523	\$1,493,017
Costa Mesa	\$311,450	\$2,326,675
County of Orange	\$380,577	\$2,897,368
Cypress	\$120,532	\$900,019
Dana Point	\$70,520	\$525,480
Fountain Valley	\$140,254	\$1,030,985
Fullerton	\$288,434	\$2,119,794
Garden Grove	\$332,936	\$2,434,553
Huntington Beach	\$421,483	\$3,112,344
Irvine	\$565,428	\$4,126,922
La Habra	\$116,740	\$862,894
La Palma	\$42,422	\$276,301
Laguna Beach	\$55,011	\$411,312
Laguna Hills	\$75,437	\$563,513
Laguna Niguel	\$149,488	\$1,109,905
Laguna Woods	\$28,996	\$214,466
Lake Forest	\$173,174	\$1,275,598
Los Alamitos	\$28,704	\$210,903
Mission Viejo	\$207,798	\$1,542,817
Newport Beach	\$237,140	\$1,766,787
Orange	\$364,905	\$2,653,326
Placentia	\$71,999	\$531,106

Measure M2

Progress Report



Entity	FY 2012-13 First Quarter M2 Funds	M2 Funds To Date
Rancho Santa Margarita	\$94,219	\$692,431
San Clemente	\$122,856	\$909,686
San Juan Capistrano	\$81,939	\$606,476
Santa Ana	\$614,506	\$4,544,679
Seal Beach	\$57,904	\$420,606
Stanton	\$65,934	\$486,090
Tustin	\$195,203	\$1,416,956
Villa Park	\$11,508	\$85,017
Westminster	\$188,810	\$1,397,941
Yorba Linda	\$132,467	\$963,956
Total M2 Funds	\$6,913,813	\$50,835,013

Measure M2

Progress Report



CAPITAL PROGRAM

Capital Projects	Cost Budget/ Forecast	Schedule Plan/Forecast			
	(millions)	Begin Environmental	Complete Environmental	Complete Design	Complete Construction
Freeway Projects:					
I-5, Pico to Vista Hermosa	\$113.0	Jun-09	Dec-11	Oct-13	Feb-18
Project C	\$113.0	Jun-09	Oct-11	Oct-13	Aug-17
I-5, Vista Hermosa to Pacific Coast Highway	\$75.6	Jun-09	Dec-11	Feb-13	Jan-16
Project C	\$75.6	Jun-09	Oct-11	Feb-13	Jan-16
I-5, Pacific Coast Highway to San Juan Creek Rd.	\$70.7	Jun-09	Dec-11	Jan-13	Nov-15
Project C	\$70.7	Jun-09	Oct-11	Jan-13	Nov-15
I-5, I-5/Ortega Interchange	\$90.9	Sep-05	Jun-09	Nov-11	Sep-15
Project D	\$81.3	Sep-05	Jun-09	Dec-11	Sep-15
I-5, I-5/Ortega Interchange (Landscape)	N/A	N/A	N/A	N/A	N/A
Project D	N/A	N/A	N/A	Dec-14	Aug-16
I-5, SR-73 to El Toro Road	TBD	Sep-11	Jun-14	TBD	TBD
Project C & D	\$558.7	Oct-11	Jun-14	Aug-17	Jul-22
I-5, SR-55 to SR-57	TBD	Jul-11	Jun-13	TBD	TBD
Project A	\$46.4	Jun-11	Oct-13	Jul-15	Mar-18
SR-55, I-405 to I-5	TBD	Feb-11	Nov-13	TBD	TBD
Project F	\$274.9	May-11	Feb-14	Dec-16	Nov-20
SR-57 Northbound (NB), Katella to Lincoln	\$78.7	Apr-08	Jul-09	Nov-10	Sep-14
Project G	\$37.8	Apr-08	Nov-09	Dec-10	Sep-14
SR-57 Northbound (NB), Katella to Lincoln (Landscape)	N/A	N/A	N/A	N/A	N/A
Project G	N/A	N/A	N/A	Jul-10	Aug-15
SR-57 (NB), Orangethorpe to Yorba Linda	\$80.2	Aug-05	Dec-07	Dec-09	Mar-14
Project G	\$57.6	Aug-05	Dec-07	Jul-09	Mar-14
SR-57 (NB), Yorba Linda to Lambert	\$79.3	Aug-05	Dec-07	Dec-09	Jul-14
Project G	\$56.5	Aug-05	Dec-07	Jul-09	Dec-13
SR-57 (NB), Orangethorpe to Lambert (Landscape)	N/A	N/A	N/A	N/A	N/A
Project G	N/A	N/A	N/A	Dec-12	Jul-15

Grey = Milestone achieved

Green = Forecast milestone meets or exceeds plan

Yellow = Forecast milestone is one to three months later than plan

Red = Forecast milestone is over three months later than plan

Measure M2

Progress Report



CAPITAL PROGRAM

Capital Projects	Cost Budget/ Forecast	Schedule Plan/Forecast			
	(millions)	Begin Environmental	Complete Environmental	Complete Design	Complete Construction
Freeway Projects:					
SR-91 Westbound (WB), I-5 to SR-57	\$78.1	Jul-07	Apr-10	Feb-12	Nov-15
Project H	\$72.6	Jul-07	Jun-10	Apr-12	Dec-15
SR-91 (WB), Tustin Interchange to SR-55	\$49.9	Jul-08	Jul-11	Mar-13	May-15
Project I	\$49.9	Jul-08	May-11	Feb-13	Apr-15
SR-91, SR-55 to SR-241	\$128.4	Jul-07	Jul-09	Jan-11	Dec-12
Project J	\$85.2	Jul-07	Apr-09	Aug-10	Dec-12
SR-91, SR-55 to SR-241 (Landscape)	N/A	N/A	N/A	N/A	N/A
Project J	N/A	N/A	N/A	Dec-12	Jul-14
SR-91 Eastbound, SR-241 to SR-71	\$104.5	Mar-05	Dec-07	Dec-08	Nov-10
Project J	\$57.8	Mar-05	Dec-07	Dec-08	Jan-11
I-405, SR-55 to I-605 (Design-Build)	TBD	Mar-09	Mar-13	TBD	TBD
Project K	\$1,450.0	Mar-09	Oct-13	May-14	Dec-19
Grade Separation Projects:					
Sand Canyon Grade Separation	\$55.6	N/A	Sep-03	Jul-10	May-14
Project R	\$55.2	N/A	Sep-03	Jul-10	Aug-14
Raymond Grade Separation	\$77.2	Feb-09	Nov-09	Aug-12	Mar-16
Project O	\$78.2	Feb-09	Nov-09	Dec-12	Aug-16
State College Grade Separation	\$73.6	Dec-08	Jan-11	Aug-12	Mar-16
Project O	\$74.6	Dec-08	Apr-11	Mar-13	Aug-16
Placentia Grade Separation	\$78.2	Jan-01	May-01	Mar-10	Nov-14
Project O	\$67.3	Jan-01	May-01	Jun-10	Nov-14
Kraemer Grade Separation	\$70.4	Jan-01	Sep-09	Jul-10	Oct-14
Project O	\$67.8	Jan-01	Sep-09	Jul-10	Oct-14
Orangethorpe Grade Separation	\$117.4	Jan-01	Sep-09	Dec-11	Mar-16
Project O	\$114.9	Jan-01	Sep-09	Oct-11	Jul-16
Tustin/Rose Grade Separation	\$103.0	Jan-01	Sep-09	Dec-11	Mar-16
Project O	\$91.3	Jan-01	Sep-09	Jul-11	Feb-16
Lakeview Grade Separation	\$70.2	Jan-01	Sep-09	Oct-11	Sep-15
Project O	\$95.5	Jan-01	Sep-09	Oct-12	Dec-15

Measure M2

Progress Report



CAPITAL PROGRAM

Capital Projects	Cost Budget/ Forecast	Schedule Plan/Forecast			
	(millions)	Begin Environmental	Complete Environmental	Complete Design	Complete Construction
Rail and Station Projects:					
Rail-Highway Grade Crossing Safety Enhancement Project R	\$94.4 \$94.4	Jan-08 Jan-08	Oct-08 Oct-08	Sep-08 Sep-08	Dec-11 Dec-11
San Clemente Beach Trail Safety Enhancements Project R	\$6.0 \$6.0	Sep-10 Sep-10	Jul-11 Jul-11	Apr-12 Jun-12	Jun-13 Sep-13
Metrolink Service Expansion Program	\$134.0 \$134.0	May-07 May-07	Apr-08 Apr-08	Mar-09 Mar-09	Jun-12 Sep-12
Anaheim Rapid Connection Project S	TBD TBD	Jan-09 Jan-09	Oct-14 Nov-14	TBD May-14	TBD Aug-18
Santa Ana/Garden Grove Fixed Guideway Project S	TBD \$252.0	Aug-09 Aug-09	Mar-12 Apr-13	TBD Nov-15	TBD Jul-18
Anaheim Regional Transportation Intermodal Center Project R & T	\$227.4 \$227.4	Apr-09 Apr-09	Feb-11 Feb-12	Feb-12 May-12	Nov-14 Nov-14

Measure M2

Progress Report

