

Irvine Ranch Historic Park

Welcome to Irvine Ranch Historic Park, the future headquarters of Orange County Parks! James Irvine I originally established the ranch in the 1860s and his son James Irvine II inherited the ranch in 1892. This ranch was a leading producer of beans, barley, sugar beets and oranges. In 1910, the *Los Angeles Times* declared Irvine Ranch to be "one of the greatest cultivated farms in the world." In addition to the Irvine family, the ranch housed numerous ranch employees and their families.

The ranch contains a variety of outbuildings in addition to the new Katie Wheeler Branch Library, a faithful reproduction of the original Irvine family ranch home. Below are some the structures that were a part of the ranch's heyday in the early 20th century and are an important part of the future of Irvine Ranch Historic Park. The numbers correspond to the site map on the back of this flyer.



1 The **Cogan House** was built on the bluffs overlooking Newport Bay in 1913, and the Irvines moved it to the ranch between 1924 and 1925. The house was named after a former purchasing agent, Charles J. Cogan, who lived there. Today, this building contains offices for OC Parks and the Orange County Farm Bureau.

4 The **Agricultural Headquarters Office Complex** was first built in 1929. It nearly doubled in size in 1959 following several remodeling projects. The Irvine Company enlarged the office building in order to accommodate a real estate and planning division, which was instrumental in developing the community of Irvine. It will soon serve as the headquarters of OC Parks.



5 The **Mess Hall**, built in 1906, had a dining room and kitchen on the first floor. The second floor housed a dormitory for the ranch workers and their families. The Irvine Company enlarged the structure to its present size following a fire in 1967.

8 In order to accommodate a growing labor force, the company built the **Bunkhouse** in 1917. Each floor was originally one large room. The rooms were later divided into smaller rooms to give some privacy to the men who lived there.



9 The **Krauss House** is named after C.F. Krauss, James Irvine II's brother-in-law. He served as ranch superintendent from 1893 to 1915, and the house was built for him and his family in 1897. It was originally a three-room house, but it now has eight rooms due to several remodeling jobs.

11 The **Red Barn** was originally constructed circa 1900, northeast of buildings 21 and 23 and moved to its current location in 1999. The barn's first purpose was to house mules, which were essential to the day-to-day operations of the ranch. After World War I, the mules were gradually phased out in favor of machinery. The barn was then used to store grain and equipment.



16-21 Construction of **Foreman's Row** originally started circa 1906, with the houses on the south side of Old Irvine Boulevard. The houses on the north side Old Irvine were added around 1935. James Irvine II liked promoting men from within the ranks and longtime laborers were sometimes made foremen. One foreman would later comment that the ranch was a "darn fine nice place to live."

26 The **Katie Wheeler Branch Library** is on the original location of the Irvine residence. Originally constructed by C.E. French in 1876, James Irvine II nearly doubled its size in 1892. Following the 1906 San Francisco earthquake, Irvine moved his wife and three children permanently to the ranch. A fire damaged the home in 1965, and it was demolished in 1968. The library was carefully designed to replicate the historic residence.



IRVINE RANCH HISTORIC PARK
SITE PLAN

LEGEND

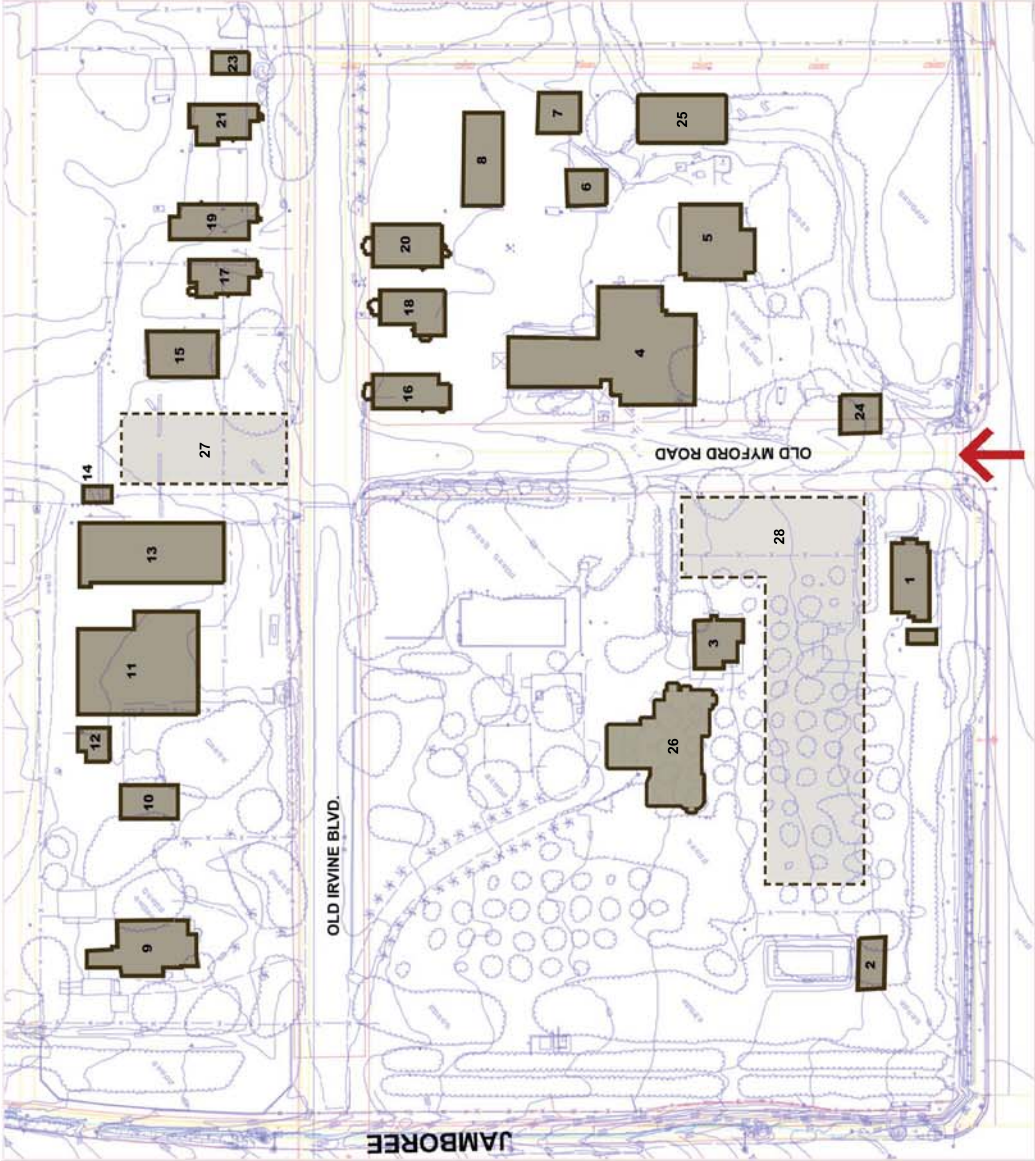
NO.	DESCRIPTION
1	COGAN HOUSE
2	BATH HOUSE AND POOL
3	CONFERENCE ROOM (MYFORD'S NEW GARAGE)
4	AGRICULTURAL HEADQUARTERS OFFICE COMPLEX
5	MESS HALL
6	EARLY OFFICE
7	BATHHOUSE
8	BUNKHOUSE
9	KRAUSS HOUSE
10	BOY SCOUT BUILDING
11	RED BARN
12	FOREMAN'S OFFICE
13	DRIVING BARN
14	SCALE HOUSE
15	PARK MAINTENANCE BUILDING
16	FOREMAN ROW HOUSE
17	FOREMAN ROW HOUSE
18	FOREMAN ROW HOUSE
19	FOREMAN ROW HOUSE
20	FOREMAN ROW HOUSE
21	FOREMAN ROW HOUSE
22	FIRE SHED
23	MYFORD'S OLD GARAGE
24	RPO MODULAR UNIT
25	KATIE WHEELER BRANCH LIBRARY
26	OC FARMERS' MARKET (TUES. 9-1PM)
27	PUBLIC PARKING
28	



IRVINE RANCH HISTORIC PARK
13042 OLD MYFORD ROAD
IRVINE, CA 92602-2304

PREPARED BY OC PARKS/DESIGN

N
NOT TO SCALE



IRVINE RANCH HISTORIC PARK FAQs

“Is the park open?”

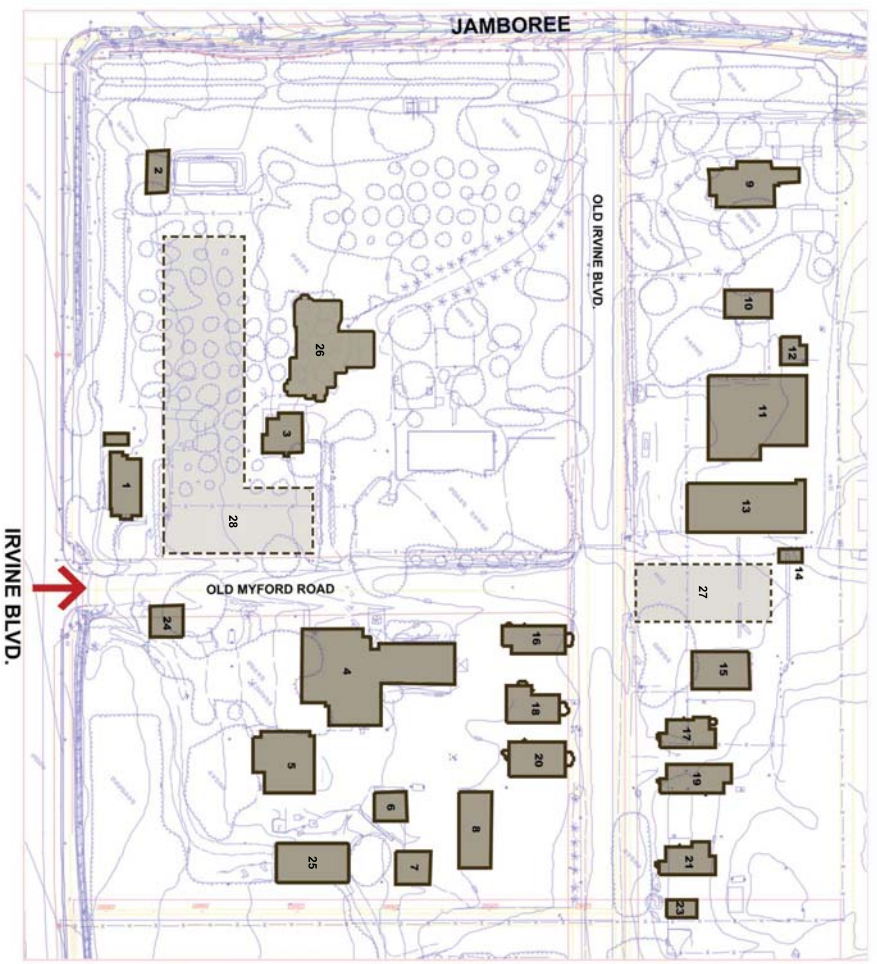
Portions of Irvine Ranch Historic Park are open. The Orange County Public Library opened the Katie Wheeler Branch Library Feb. 23. Staff from Orange County Parks is expected to move into the old Agricultural Headquarters building in March. Also, the Orange County Farm Bureau operates a Farmers Market Tuesdays from 9 a.m. to 1 p.m. The Ranch’s historic gardens will later be available for special events and weddings on a reservation basis. Please contact Orange County Parks at (949) 923-2230 or irvineranch@ocparks.com.

“Is the park finished?”

OC Parks has started the planning process for the future of Irvine Ranch Historic Park. The park is currently operating under an Interim Operations Plan as part of the site’s Master Planning Program, which was approved by the County of Orange Board of

Supervisors. The Master Plan established the prime interpretive theme and historic period for the facility, goals and objectives, cultural and historic resources and interpretive programs. Over the next couple years, Orange County Parks will be drafting a General Development Plan (GDP) for the park. The GDP will define appropriate adaptive reuse of the site’s many historic buildings, and will determine appropriate vehicular and pedestrian circulation, parking and architectural treatments (fencing, site furnishings, signage). It will also guide development of an interpretive program, infrastructure requirements, phased capital improvements, and required staffing. Public workshops will be held to seek community and stakeholder input. A professional historic site design and planning team selected by the Board of Supervisors will be retained to assist OC Parks in developing the GDP.

IRVINE RANCH HISTORIC PARK



IRVINE RANCH HISTORIC PARK
SITE PLAN

LEGEND

NO.	DESCRIPTION
1	COGAN HOUSE
2	BATH HOUSE AND POOL
3	CONFERENCE ROOM (MYFORD'S NEW GARAGE)
4	AGRICULTURAL HEADQUARTERS OFFICE COMPLEX
5	MESS HALL
6	EARLY OFFICE
7	BATHHOUSE
8	BUNKHOUSE
9	KRAUSS HOUSE
10	BOY SCOUT BUILDING
11	RED BARN
12	FOREMAN'S OFFICE
13	DRIVING BARN
14	SCALE HOUSE
15	PARK MAINTENANCE BUILDING
16	FOREMAN ROW HOUSE
17	FOREMAN ROW HOUSE
18	FOREMAN ROW HOUSE
19	FOREMAN ROW HOUSE
20	FOREMAN ROW HOUSE
21	FOREMAN ROW HOUSE
22	FIRE SHED
23	MYFORD'S OLD GARAGE
24	RPO MODULAR UNIT
25	KATIE WHEELER BRANCH LIBRARY
26	OC FARMERS' MARKET (TUES. 9-1PM)
27	PUBLIC PARKING
28	



IRVINE RANCH HISTORIC PARK
13042 OLD MYFORD ROAD
IRVINE, CA 92602-2304

PREPARED BY OC PARKS/DESIGN



Ranch History



The Irvine Ranch

Irvine Ranch Historic Park is a 16.5 acre special use park established by the County in 1996. The park retains 24 original ranch structures that represent the proud agricultural history of Orange County and, specifically, the Irvine Ranch. It was once one of the world's greatest producers of Valencia oranges, and a leader in dry farming and livestock.

The history of the ranch began with James Irvine. He joined two others owning the property before becoming the sole owner of it in 1878. After his death in 1886, his son James Irvine II (J.I.) became the successor of his father's ranch. The ranch grew significantly and transformed into a successful, multi-funtional ranch. J.I. added extra bunkhouses and employee housing on Foreman's Row. These structures will be restored for adaptive reuse at Irvine Ranch Historic Park. Every building located on the Ranch represents an integral part of the growth, operation, and maintenance of the land. The Ranch stands as an important part of Orange County and California's agricultural history and tells the story of a unique generation and tradition.

Orange County Parks adopted a Master Planning Program that established the prime historic period from 1876 to 1947 as a guide for future restoration and interpretation of the historic property.



Original Irvine Family Ranch House

The Katie Wheeler Branch Library has recreated the exterior of the Irvine family home on its original site and adapted the structure to provide library services.



Former Irvine Ranch Agricultural Headquarters

The former agricultural headquarters offices are undergoing stabilization and rehabilitation. They will soon become the new headquarters of OC Parks.

What's going on at the Ranch?

OC Parks will initiate a General Development Plan (GDP) in the coming year to propose park improvement projects. These will align with OC Parks' mission and with the preservation goals of the historic site and will utilize sustainable building design and practices as feasible.

The public is invited to participate in the GDP process. To learn more, please visit www.OCParks.com or contact OC Parks Design projects at (714) 973-6614.

Other Events at the Ranch

The Orange County Farm Bureau hosts a community Farmers Market in cooperation with the County of Orange. The Farmers Market is open every Tuesday from 9 a.m. to 1 p.m. and primarily features fresh produce.



Irvine Ranch Historic Park

The Ranch's historic gardens will later be available for special events and weddings on a reservation basis. Please contact South County Historical Facilities at (949) 923-2230 or irvineranch@ocparks.com

 ocparks.com

Courtesy of the County of Orange Board of Supervisors

